

An NGC Standard Flower Show

Co-Presented by

Florida Federation of Garden Clubs District VI
& District VI Florida Flower Show Judges

BUSY BEES



Friday, March 8, 2024 1:00 PM - 4:00 PM

Saturday, March 9, 2024 10:00 AM - 3:00 PM

at

The Garden Club of DeLand, Inc.

865 South Alabama Avenue, DeLand, FL 32724

Member

National Garden Clubs, Inc.

Deep South Garden Clubs, Inc

Florida Federation of Garden Clubs, Inc

District VI

Free and Open to the Public



An NGC Standard Flower Show

**Co-Presented by
Florida Federation of Garden Clubs District VI
& District VI Florida Flower Show Judges**

Friday, March 8, 2024 1:00pm – 4:00pm
Saturday, March 9, 2024 10:00am – 3:00pm

at the
Garden Club of DeLand
865 South Alabama Avenue, DeLand, FL 32724
(386) 624-6960

Member:
Florida Federation of Garden Clubs, Inc.
Deep South Garden Clubs, Inc.
National Garden Clubs, Inc.
District VI

Open to the Public  **Free Admission**

“BUSY BEES”

Message from the Flower Show Chairman (Queen Bee!)

LET'S ALL BEE FRIENDLY IN THE GARDEN

Welcome to the District VI and District VI Flower Show Judges' Council Flower Show! This is our first combined Flower Show, and we hope you will like what you see.

Our esteemed District VI Director, Valerie Seinfeld has chosen “Bee Happy in the Garden” as the theme for her 2023-2025 administration. We've chosen “Busy Bees” as our Flower Show title – tying in with her theme of focusing on the mighty bee.

Here are a few things you probably didn't know about this amazing creature:

- 🍷 One out of every three mouthfuls of our food depends on pollinators such as bees.
- 🍷 90% of wild plants and 75% of leading global crops depend on pollination.
- 🍷 Crops that depend on pollination are five times more valuable than those that do not.
- 🍷 Bees actually have four wings. Two wings on each side hook together to form one larger pair when flying and then unhook when they're not flying.
- 🍷 Honeybees have a dance move called the ‘waggle dance’ – it's not actually a dance move, rather a clever way of communicating between themselves to tell their nestmates where to go to find the best source of food. It took researchers two years to decode the ‘waggle dance.’ Maybe if we watch them enough, we'll learn to waggle too!

Make your garden bee-friendly! Plant a range of flowers in your garden so bees have access to nectar from March to October. Bees love traditional cottage garden flowers and wildflowers, like primrose, marigolds, sunflowers, etc.

Please enjoy the wonderful Busy Bees Flower Show!

Andrea Finn
Flower Show Chairman

Jennifer Condo, Co-Chairman
Horticulture

Penny Decker, Co-Chairman
Design



“BUSY BEES”

Table of Contents

Message from the Flower Show Chairman	2
Table of Contents	3
Committee Chairs	4
General Rules	5
<u>DIVISION I – HORTICULTURE</u>	
Horticulture Rules	6
Horticulture Scale of Points	7
Horticulture NGC Top Exhibitor Awards	7
Horticulture Sections	8-10
<u>DIVISION II – DESIGN</u>	
Design Rules	11
Design Scale of Points	12
Design NGC Top Exhibitor Awards	12
Design Sections	13-15
<u>DIVISION III – EDUCATION</u>	
Education Rules	16
Education Award	16
Education Section	16
<u>DIVISION IV – BOTANICAL ARTS</u>	
Artistic Crafts Rules	17
Artistic Crafts Award	18
Artistic Crafts Section	18
<u>FLOOR LAYOUT</u>	19





“BUSY BEES”



Worker Bees

District VI Director	Valerie Seinfeld	Garden Club of DeLand
District VI FFSJ Director	Penny Decker	Cherry Laurel Garden Club

SHOW CHAIRMAN	Andrea Finn	Cherry Laurel Garden Club 386-677-2630
----------------------	-------------	---

Co-Chairman Horticulture	Jennifer Condo	Garden Club of DeLand 386-956-2729
-----------------------------	----------------	---------------------------------------

Co-Chairman Design	Penny Decker	Cherry Laurel Garden Club 386-676-2990
-----------------------	--------------	---

(The above Chairmen may be reached between 10 AM and 4 PM daily)

AWARDS	Judi Jodoin	New Smyrna Garden Club
---------------	-------------	------------------------

CLASSIFICATION		
Horticulture	Jennifer Condo	Garden Club of DeLand
	Master Gardeners	Volusia County
Design	Sally Flanagan	New Smyrna Garden Club
CLERKS	Debra Griffith	DeLeon Springs Garden Club

CONSULTANTS		
Horticulture	Jennifer Condo	Garden Club of DeLand
Design/Botanical Arts	Penny Decker	Cherry Laurel Garden Club
EDUCATIONAL EXHIBIT	Valerie Seinfeld	Garden Club of DeLand

ENTRIES/PLACEMENT		
Horticulture	Jennifer Condo	Garden Club of DeLand
	Master Gardeners	Volusia County
Design/Botanical Arts	Penny Decker	Cherry Laurel Garden Club
FOCAL AREA	Denise Garcia	Garden Club at Palm Coast
HOSPITALITY	Marshall Rawson	Marigold Circle - DeLand
HOSTESSES	Lupita Wiggans	Rose Circle – DeLand
JUDGES	Betty Moore	Indian Harbor Beach GC
	Elaine Thornton	Indian Harbor Beach

GC

NAME TAGS	Zetta Gillespie	Ormond Beach Garden Club
PUBLICITY	Valerie Seinfeld	Garden Club of DeLand
SCHEDULE	Becky Lindhorst	South Peninsula Garden Club
	Penny Decker	Cherry Laurel Garden Club
	Andrea Finn	Cherry Laurel Garden Club
Cover Design	Valerie Seinfeld	Garden Club of DeLand
STAGING/SIGNAGE	Denise Crutchfield	New Smyrna Garden Club
SET-UP/DISMANTLING	Members	District VI



General Rules

HB pp 24 - 25

1. This Flower Show conforms to the standards established by National Garden Clubs, Inc. (NGC). *The Handbook for Flower Shows (HB)*, 2017 Edition, with any revisions printed in *The National Gardener (TNG)* magazine, is the authority for all issues not covered by the Flower Show Schedule, which is the Law of the Show.
2. All Classes are open to members of NGC. Competition in Divisions II and IV-Design and Artistic Crafts, are open to all NGC members; Division I-Horticulture entries are open to any amateur gardener; entry in Division III Education is by invitation. All Design entries will be registered in advance with the Design Entries Chairperson, either by phone or email, prior to February 15, 2024. Horticulture Entry cards may be obtained from the Horticulture Chairman or the Show Chairman. Chairmen titles and contact information are listed on page 4.
3. There must be an emphasis on FRESH plant material. NO artificial plant material is permitted in any exhibit in any division.
4. Each exhibitor is limited to one entry per class, except in Division I - Horticulture (all sections).
5. ALL entries will be accepted on Thursday, March 7, 2024 at the following times:

Division I Horticulture	10:00am - 4:00pm
Division II Design	1:00pm - 4:00pm
Division III Educational Exhibit	1:00pm - 4:00pm
Division IV-Artistic Crafts	1:00am-4:00pm
Show Judges - Design	10:00am-12:00pm
Show Judges-Artistic Crafts	10:00am-12:00pm
6. It is the obligation of the Division Classification Consultants to check exhibits for conformity to the schedule prior to judging. Final determination for conformance is the judges' responsibility.
7. Judging will begin at 9:30am Friday, March 8, 2024. The General Chair and the Classification Chair for each Division are available during judging for possible consultation. They, along with the judges and clerks, are the only personnel allowed on the floor during judging.
8. The Flower Show will be open to the public on Friday, March 8, 2024 from 1:00pm - 4:00pm and Saturday, March 9, 2024 from 10:00am - 3:00pm.
9. The decisions of the judges are final. Awards may be withheld if not merited. The NGC Standard System of Awarding is used in all divisions.
 - a. Only one (1) first-place (blue) ribbon per class or subclass; must score 90 points or more
 - b. Only one (1) second-place (red) ribbon per class or subclass; must score 85 points or more
 - c. Only one (1) third-place (yellow) ribbon per class or subclass; must score 80 points or more
 - d. One (1) or more Honorable Mention (white) ribbons as merited; must score 75 points or more
10. Entry cards of blue ribbon and 90+ exhibits must be signed and dated by an NGC Accredited Judge on the panel. All other entry cards must be initialed. (Accredited or Student Judge may initial). Top Exhibitor award rosettes must be signed and dated on the back by the NGC panel that judged the section. *HB p 6.*
11. Exhibitors MUST remove all entries on Saturday, March 9, 2024 between 3:15 p.m. and 4:00pm. Any remaining entries will be disposed of without notification.
12. Native plants may be entered provided such plants have been legally obtained and grown by the exhibitor for at least three months. Reference: http://edis.ifas.ufl.edu/topic_native_plants
13. The use of plant material classified as Federal Noxious is prohibited. Reference: http://www.aphis.usda.gov/plant_health/plant_pest_info/weeds/downloads/weedlist.pdf
14. The use of plant material on Florida's Federally Listed Plant as endangered or threatened is prohibited. Reference: <https://plants.usda.gov/java/threat?statelist=states&stateSelect=US12>
15. No solicitation material may be included in any exhibits.
16. The American flag and other national flags are not permitted in the Design Division.
17. The Flower Show Committee and Garden Club of DeLand will strive to assure the safety of all items after arrival and placement, but is not responsible for any loss or damage to exhibits.



Division I - Horticulture

“BEE GREEN”

Horticulture Rules

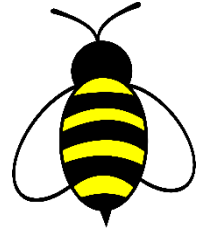
HB pp 27, 28, 55, 56



1. All General Rules apply.
2. The National Garden Clubs' Standard System of Awarding and the Scale of Points for All Cut or Container-Grown Horticulture will be used. (HB p 129)
3. The rules for a single species cut or container-grown specimen are listed in the HB pp 58, 59, or its supplement, *Horticulture Exhibiting and Judging*.
4. The NGC Exhibit Policies are printed in the HB p 55. Entries will be accepted on Thursday, March 7, 2024 between 10:00am and 4:00pm. Entry cards will be available from the Horticulture Entries Chairman, Jennifer Condo, cell: 386.956.2729. Exhibitors MUST remove all entries on Saturday, March 9, 2024 between 3:15 - 4:00pm. Any remaining entries will be disposed of without notification.
5. All plant material must be fresh and grown by the exhibitor. Container grown plants must have been in the possession of the exhibitor for no fewer than ninety (90) days except for plants grown from seed, seedling cuttings, or immature transplants, bulbs, tubers, corms, or rhizomes. Cut specimens must have been cared for as a mature plant at least ninety (90) days. Arboreals (woody ornamentals) must have been in the exhibitor's possession for 6 months. HB pp 55
6. Entry cards are to be filled out in advance, if possible in pencil. All entries and entry cards will be checked by the Classification Committee before being placed in the exhibition area.
7. Specimens with a class designation in the schedule may not be entered in the 'Any Other Worthy Named' Class.
8. The Horticulture Classification Chair and/or General Show Chair may subdivide classes per HB p 3 providing that there are three (3) or more similar exhibits in the subclasses.
9. All entries are to be labeled by genus, specific epithet and variety/cultivar or patented/trademarked names. Common names may also be given. Refer to HB p 57 for a correctly filled out entry card. In order to receive an NGC Top Exhibitor Award, the entry card must be correctly filled out.
10. Horticulture specimens must be of superior quality and well-groomed.
11. Only one plant per pot is permitted, except where schedule permits. Plants that grow naturally with multiple stems will be considered one plant. Double potting and staking are allowed. Inner pot must not be visible and staking must be unobtrusive. No wiring of specimens is permitted.
12. Cut specimens should not have foliage below the water line except for *Gladiolus*.
13. If a plant is considered a flowering plant, it should be exhibited as a flowering specimen. Foliage plants may flower, but should be exhibited as foliage plants if they are grown for their leaves. Only foliage and/or flowers naturally grown and still attached to the specimen are permitted in the Flower Show. Unattached foliage is never included with a cut bloom.
14. Clear glass bottles for cut specimens must be provided by the exhibitor. The flower show committee will provide clear plastic wrap for wedging.
15. Containers for all container-grown plants are not to exceed 14" in diameter. NO entries over 20 lbs.
16. Exhibitor may make more than one entry per class or sub-class, if each is a different genus, species, variety, cultivar, type, form, size, or color.
17. Plant material may not be altered by the application (treatment) of oil, commercial "shine" products, etc. that may artificially change the natural color and texture



Division I - Horticulture



“BEE GREEN” Horticulture Scale of Points

All Cut or Container-Grown Horticulture

Used to judge all sections.

HB pp 129

Criteria	Value (point)
Conformance	5
Plant identification	5
Peak of perfection	
Form	20
Color	20
Maturity/Size	20
Condition/Blemishes	15
Grooming/Staging	
Grooming	10
Staging	5
Total	100

Top Exhibitor Awards

Division Award

AWARD OF HORTICULTURAL EXCELLENCE

(Rosette of green, blue and orange ribbons)

HB p 40

One (1) Division Award is offered and may be awarded to the highest scoring and correctly named blue ribbon exhibit scoring 95 or above in the entire Horticulture Division.

Section Awards

Awarded to the highest-scoring, correctly named blue ribbon winner scoring 95 or above meeting all section requirements

No minimum number of exhibits is required per class

Awards may be withheld if not merited

ABOREAL AWARD

(Rosette of green ribbons)

HB pp 40, 41

For cut or container-grown trees and/or shrubs: One (1) award in Section G

AWARD OF MERIT

(Rosette of orange ribbons)

HB p 41

For all cut non-woody specimens: One (1) award in each of Sections E, F

GROWER'S CHOICE AWARD

(Rosette of dark green ribbons)

HB p 41

For all container-grown plants, including foliage, flowering, fruit or vegetable specimens:

One (1) award in each of Sections A, Bee, C, D

Division I - Horticulture

“BEE GREEN”

Eligible for Award of Horticultural Excellence

HB p 40

Section A: “Bee Lovely”

Eligible for **Grower’s Choice Award**

Container-grown flowering or plant with colorful bracts
(other than succulents)

HB p 41

Class

1. *Anthurium*
2. *Begonia*
3. *Pelagonium*
4. Orchid
5. *Saintpaulia*
(African violet)
6. *Spathiphyllum*
(peace lily)
7. Any other worthy named specimen



Section Bee: “Bee Dramatic”

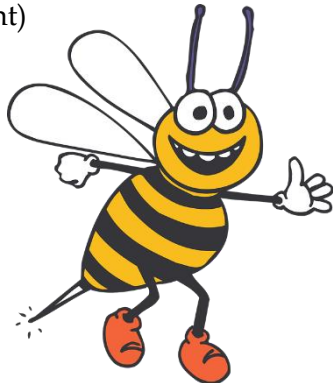
Eligible for **Grower’s Choice Award**

Container-grown foliage plant
(other than succulents)

HB p 41

Class

8. *Asparagus densiflorus* ‘Meyersii’
(foxtail)
9. *Begonia*
10. *Chlorophytum*
(spider plant)
11. *Codiaeum* (croton)
12. *Cordyline* (ti plant)
13. *Dieffenbachia*
(dumb cane)
14. *Dracaena*
15. *Epipremnum* (pothos)
16. Fern
17. *Maranta* (prayer plant)
18. *Peperomia*
19. *Philodendron*
20. *Spathiphyllum*
(peace lily)
21. Any other worthy named specimen



Division I - Horticulture

“BEE GREEN”

HB p 40

Section C: “Bee Prickly”

Eligible for **Grower’s Choice Award**

Container-grown succulent

HB p 41

Class

- | | |
|------------------------------------|--|
| 22. Cactus | 23. <i>Beaucarnea</i>
(Ponytail Palm) |
| a. <i>Cereus</i> | 24. <i>Crassula</i> |
| b. <i>Cleistocactus</i> | 25. <i>Echeveria</i> |
| c. <i>Echinocactus</i> | 26. <i>Euphorbia</i> |
| d. <i>Epiphyllum</i> | 27. <i>Haworthia</i> |
| e. <i>Mammillaria</i> | 28. <i>Hoya</i> |
| f. <i>Opuntia</i> | 29. <i>Sansevieria</i> |
| g. <i>Rhipsalis</i> | 30. Any other worthy named succulent |
| h. Any other worthy named specimen | |

Section D: “Bee Airy”

Eligible for **Grower’s Choice Award**

Container-grown, mounted or loose bromeliad

HB p 41

Class

- | | |
|------------------------|-------------------------------------|
| 31. <i>Aechmea</i> | 34. <i>Tillandsia</i> |
| 32. <i>Billbergia</i> | 35. Any other worthy named specimen |
| 33. <i>Cryptanthus</i> | |

Section E: “Bee Flowery”

Eligible for one (1) **Award of Merit**

Cut flowering annual or perennial or stem with colorful bracts

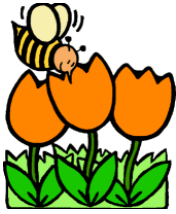
Length must be appropriate to the plant growth

HB p 41

Class

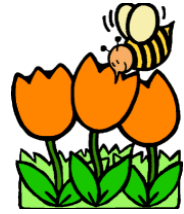
- | | |
|--------------------------|--|
| 36. <i>Crinum</i> | 39. <i>Strelitzia</i> (Bird of Paradise) |
| 37. <i>Lilium</i> (Lily) | 40. <i>Zingiberaceae</i> (Ginger) |
| 38. <i>Rosa</i> (Rose) | 41. Any other worthy named specimen |





Division I - Horticulture

“BEE GREEN”



Section F: “Bee Strong”

Eligible for **Award of Merit**

Cut stem of tropical foliage - Length must be appropriate to the plant growth

HB p 41

Class

42. *Alocasia*

43. *Anthurium*

44. *Aspidistra*

45. *Cordyline*

46. *Dracaena*

47. *Philodendron*

48. *Sansevieria*

49. Any other worthy named specimen

Section G: “Bee Beautiful”

Eligible for one (1) **Arboreal Award**

Cut **foliage or coned/fruited** arboreal branch of a tree or shrub

One (1) branch; must include an apical tip, central leader and several nodes, not to exceed 30" in length.

HB pp 40, 41

Class

50. Evergreen shrub or tree

a. *Ilex*

a. *Magnolia*

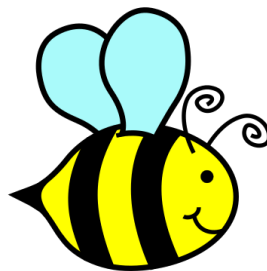
b. *Podocarpus*

c. *Viburnum*

d. Any other worthy named

51. Coned shrub or tree

52. Fruited/berried shrub or tree





Division II - Design “BEE CREATIVE” Design Rules



HB pp 28-29; 79-81

1. All General Rules apply.
2. The NGC Exhibit Policies are printed in the *HB* pp 79-80.
3. The National Garden Clubs' Standard System of Awarding will be used. The Scale of Points for Design is listed in the *HB* p 130.
4. Register prior to February 15, 2024 with the Design Entries Chairperson, Penny Decker, 386.676.2990, pennyfloralart@earthlink.net.
5. Design entries will be accepted as follows:
Thursday, March 7, 2024
 General Design Entries 1:00 - 4:00pm
 Show Judges 10:00 - 12:00pm
Saturday, March 9, 2024 between 3:15 - 4:00pm
Exhibitors MUST remove all entries. Any remaining entries will be disposed of without notification.
6. All plant material used in the design **MUST** be identified on a 3" x 5" card, provided by the exhibitor and included with the entry card. Additionally, design interpretation on a 3"x5" card is optional.
7. The exhibitor has the freedom to choose Traditional or Creative Style with any design listed unless restricted by the Flower Show Schedule. Design must be approved for conformance and classification by the Design Classification Chair, before the exhibitor leaves the show area.
8. Any questions regarding designs should be directed to the Design Consultant, Penny Decker, 386.676.2990 pennyfloralart@earthlink.net.
9. Design entries may be refreshed prior to judging on Friday, March 8, 2024 from 7:00am to 8:00am Exhibitors are expected to maintain their exhibits for the duration of the show.
10. An exhibitor may enter multiple classes within the Design Division, but only one (1) exhibit per class.
11. Some plant material must be used in every exhibit. This includes fresh and/or dried plant material. Plant material need not be grown by exhibitor. Plant material and non-plant material permitted and not permitted in the Design Division are printed in the *HB* pp 80-81.
12. The exhibit must be the work of only one (1) exhibitor and that exhibitor's name must appear on the entry card.
13. If an exhibitor is unable to fulfill their assignment, it is her/his responsibility to find a replacement.
14. If the exhibitor is unavailable or unable to transport and/or set up her/his completed design, a substitute person may place the completed design. The exhibitor may still receive exhibiting credit if needed.
15. A single flower is not a design. Container-grown plants are fresh plant material and are permitted in the Design Division where appropriate, but they are never considered floral designs. . Landscapes, scenes or anything representing an actual item of clothing, person, animal, etc., are not considered acceptable in the Design Division. Religious symbols used in a design must be displayed in a respectful manner. Prepared food, cut fruits and/or vegetables are not allowed.
16. Painting, flocking, glittering or dyeing of fresh plant material in any manner is not permitted. All other embellishments of fresh plant material are permitted.
17. The exhibitor is required to conform to the stated description and limitations of the Design Type if named in the class.
18. Rules for Design Types, Advanced Design Types, Table Designs and Table Appointments are printed in the *HB* pp 70-79. The exhibitor is on her/his honor to ensure that the design being entered has neither been previously entered nor previously judged in an NGC Flower Show.



Division II - Design “BEE CREATIVE”



Design Scale of Points

HB p 130

Criteria	Value (Points)
Conformance (to schedule requirements)	
Design	7
All Other Schedule Requirements	7
Design (Elements and Principles of Design)	48
Creative Selection of Components	8
Organization of all Components	8
Expression (interpretation of class by exhibitor)	8
Distinction (marked superiority in all respects)	<u>14</u>
TOTAL	100

Top Exhibitor Awards

HB pp 42-43

Division Award

AWARD OF DESIGN EXCELLENCE

(Rosette of Red Ribbons)

One (1) Award is offered and may be awarded to the highest scoring blue ribbon winner entered by an individual scoring 95 or above in the entire Design Division provided all General and Design requirements have been met.

Section Awards

Exhibit must be a blue ribbon winner scoring 95 or above entered by an individual. Section must have a minimum of three (3) classes with at least four (4) exhibits each. All General and Design Requirements must have been met. If no exhibit meets the requirements in a section, judges must withhold the award.

DESIGNER’S CHOICE AWARD

(Rosette of Purple Ribbons)

Two Section Award’s are offered and may be awarded to the highest scoring blue ribbon winners in “**Bee Happy**”, Section Bee, Classes 4, 5 and 6 and “**Bee Productive**”, Section C, Classes 7, 8 and 9. Plant material used in the exhibit may be dried, treated dried and/or fresh.

Exhibitor has freedom to choose other components within NGC policies.

TABLE ARTISTRY AWARD

(Rosette of Burgundy Ribbons)

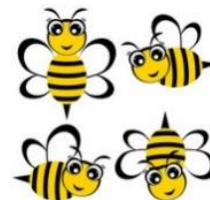
A Section Award is offered and may be awarded to the highest scoring blue ribbon winner in “**Bee Hungry**”, Section A, Classes 1, 2 and 3. Designer’s choice of fresh and/or dried plant material and other components.

Division II - Design

“BEE CREATIVE”

Section A: “BEE HUNGRY”

Eligible for Table Artistry Award



Class 1. “Bee Up Early

4 entries

An *Informal Tray for One* HB p 76

Greet the day with a breakfast tray!

“The decorative Unit should be in scale to the one (1) place setting. The tray requires an appropriate-sized Decorative Unit with the stability of the Decorative Unit given importance”

Staged on a 24” square natural wood pedestal 30” high in front of a light grey wall. Viewed from the front.

Class 2. “Bee Culinary”

4 entries

An *Exhibition Table* HB p 76

Imagine whipping up the “Dish of the Day” in your designer kitchen. Go all out!

“Not meant to be functional. Created artistically to suggest the service of food with no requirements as to the type or number of table appointments. Plant material must be used as needed for the overall design.”

To be staged on one half of a table 30” tall, draped to the floor with a black cloth, frame of reference/space allotted for the design is 32” wide, 24” deep, 48” high. A staging panel 30” - 32” wide by 48” high is required; an underlay measuring 30” - 32” wide by 24” deep is also required. Both are to be provided by the exhibitor. Viewed from the front.

Class 3. “Bee Mine”

4 entries

A *Semi-formal Functional Table for Two* HB p 76

Romance is abuzz!



“a. Table planned and set for actual service of food.

b. Convenience and sense of order must prevail.

c. A decorative unit (completed floral design with/without candles and other accessories) must be included. A container-grown plant alone is not a design.”

Staged on a card table 30” high with a 32” square covered with a floor-length black cloth provided by the committee. Overlay permitted. Viewed from all sides.



Division II - Design "BEE CREATIVE"



Section Bee: "BEE HAPPY"

Eligible for the Designers Choice Award

Class 4. "Bee Line"

4 entries

A Creative Line Design HB pp 74

Novice Class*

Bees swarming always go in one direction.

"A creative design where line is dominant with a minimum of plant material and other optional components.

***This class is for "New Bees" and limited to exhibitors who have not yet won a blue ribbon in an NGC Flower Show."**

Staged on one half of a 6' long by 30" high table draped in black in front of a light blue panel 36" high by 24" wide, provided by the committee. Light blue 24" square underlay provided. Space allotted for the design is 36" high by 24" wide by 24" deep. Viewed from the front.

Class 5. "Bee Bright"

4 entries

An Illuminary Design HB pp 74

Let your imagination shine!

"A creative design incorporating lights for special effect and as an integral part of the design."

To be staged on one half of a 6' table 30" tall, draped to the floor with a black cloth, frame of reference/space allotted for the design is 32" wide, 24" deep, 48" high. A staging panel 30" - 32" wide by 48" high is required; an underlay measuring 30" - 32" wide by 24" deep is also required and both are to be provided by the exhibitor. Viewed from the front.

Class 6. "Bee Free"

4 entries

A Creative Design HB pp 71-72

Let your imagination run wild!

Creative Design characteristics can be found on pages 71-72 in the Handbook.

Staged on a 30" high black pedestal with a 24" round top. Viewed from all sides. Judged from the front.





Division II - Design “BEE CREATIVE”



Section C: “BEE PRODUCTIVE”

Eligible for the Designers Choice Award

Class 7. “Bee Flighty”

4 entries

A Transparency Design HB pp 77

Let your imagination soar!

“A creative design with see-through elements (translucent, diaphanous, grid-like materials, etc.) integral to the design and permitting some components to be viewed through others.”

Staged on a 24” square natural wood pedestal 30” high. Viewed from all sides. Judged from the front.

Class 8. “Bee Constructive”

4 entries



A Construction Design HB pp 74

Bee inspired by the busy builders of intricate hives!

“A creative design with strong architectural characteristics using geometric form or forms combined into a single three-dimensional unit.”

To be staged on ½ of a 6’ table 30” tall, draped to the floor with a black cloth, frame of reference/space allotted for the design is 32” wide, 24” deep, 48” high. A staging panel 30”- 32” wide by 48” high is required; an underlay measuring 30”- 32” wide by 24” deep is also required and both are to be provided by the exhibitor. Viewed from the front.

Class 9. “Bee Buzzy”

4 entries



A Creative Multi-Rhythmic Design HB p 75

Imitate the Flight of the Bumble Bee in this design.

“A creative design with emphasis on two (2) or more rhythms in the design with one (1) rhythm dominating.”

Staged on a 24” square natural wood pedestal 30” high in front of a light grey wall. Viewed from the front.





Division III - Education "BEE AWARE"



Education Rules

HB pp 85, 86

1. Education Exhibits may be the work of more than one individual or organization unless a Student Judge or an Accredited Judge is seeking exhibiting credit.
2. Use of plant material is encouraged.
3. No artificial plant material is permitted.

Education Scale of Points

HB pp 130

Criteria	Value (points)
Educational Value	
Interest to viewer	25
Clear, concise presentation	15
Adequate signage	10
Conforms to NGC objectives`	10
Staging	
Craftmanship/Technique	10
Distinction	10
Creativity and Expression	<u>20</u>
TOTAL	100

National Garden Clubs, Inc. Recognition Award

AWARD OF APPRECIATION

(Rosette of orchid ribbons)

One (1) may be offered to Exhibit 1 at the determination of the show committee *HB p 45*

Section A: "BEE SMART"

Class 1. "Pollinators"

Exhibit 1. "Bee Prolific" 1 entry

Staged on a 6' long table which is 30" deep and 30" high covered with a floor length black cloth. Viewed from the front.



Division IV - Botanical Arts - Artistic Crafts "BEE CRAFTY"



Botanical Arts - Artistic Crafts Rules

HB pp 94

1. All General Rules apply.
2. The NGC Exhibit Policies are printed in the *HB* pp 79-80.
3. The National Garden Clubs' Standard System of Awarding will be used. The Scale of Points for Botanical Arts - Artistic Crafts is listed in the *HB* p 131.
4. Register prior to February 15, 2024 with the Artistic Crafts Entries Chairperson, Penny Decker, 386.676.2990, pennyfloralart@earthlink.net.
5. Design entries will be accepted as follows:
Thursday, March 7, 2024
Artistic Crafts Entries 1:00 - 4:00pm
Show Judges Artistic Crafts 10:00 - 12:00pm
6. Saturday, March 9, 2024 between 3:15 - 4:00pm Exhibitors **MUST** remove all entries. Any remaining entries will be disposed of without notification.
7. All plant material used in the design **MUST** be identified on a 3"x 5" card, provided by the exhibitor and included with the entry card. Additionally, interpretation on a 3"x5" card is optional.
8. Exhibit must contain some fresh and/or dried plant material. Only dried material may be treated. Plant material and non-plant material permitted and not permitted in the Artistic Arts Division are printed in the *HB* pp 80-81.
9. No artificial, endangered or locally invasive plant material may be used.
10. The exhibit must be the work of only one (1) exhibitor and that exhibitor's name must appear on the entry card.
11. If an exhibitor is unable to fulfill their assignment, it is her/his responsibility to find a replacement.
12. If the exhibitor is unavailable or unable to transport and/or set up her/his completed design, a substitute person may place the completed design. The exhibitor may still receive exhibiting credit if needed.



Botanical Arts - Artistic Crafts Scale of Points *HB pp 131*

Criteria	Value (points)
Conformance	25
Design	30
Craftsmanship/Technique	25
Distinction	20
TOTAL	100



Division IV - Botanical Arts - Artistic Crafts "BEE CRAFTY"



Botanical Arts - Artistic Crafts Award

HB pp 44

Division Award

BOTANICAL ARTS - ARTISTIC CRAFTS AWARD

(Rosette of Navy Blue Ribbons)

One (1) Award is offered and may be awarded to the highest scoring blue ribbon winner entered by an individual scoring 95 or above in the entire Artistic Crafts Division provided all General and Division requirements have been met.

Section A: "BEEACHY"

Eligible for the Artistic Crafts Award



All entries will be exhibited on an 8" high stage.

Class 1. "Bee Chic"

4 entries

A Decorated Hat HB pp 95

Beat the heat in your chic beeach hat.

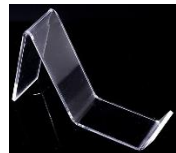
A decorated brimmed hat not to exceed 18" in diameter, displayed on a 16" tall black mannequin head supplied by the committee. Staged on a 16" round black pedestal 36" high. Viewed from the front against a black curtain.



Class 2. "Bee in Step"

4 entries

A Decorated Sandal HB pp 95



The sand is hot - BEEWARE!

A decorated sandal staged on a clear acrylic shoe stand measuring 5.91" high by 3.14" wide placed on one half of a 24" square platform 8" high draped in black. Viewed from above and all sides.

Class 3. "Bee in Style"

4 entries

A Decorated Tote HB pp 95

Store your beach must-haves in a trendy tote.

A decorated tote staged on a 24" square platform 18" high draped in black. Viewed from above and all sides.



"BUSY BEES"

Layout

