

The Florida

GARDENER

JANUARY/FEBURARY 1978



CALENDAR OF EVENTS

Board of Directors Meetings:

January 11-12, 1978—Headquarters, Winter Park

Coming Events:

1978:

January 20, Florida Arbor Day
 January 24-25, Tropical Short Course, Barry College, Miami Shores
 February 28-March 3, Environmental Education Workshop, Wekiva
 March 13-15, Deep South Regional Convention, Carlton House (now Holiday Inn)
 March 20-22, UF Short Course, Gainesville
 April 2-8, Blanche Covington Nature Study Course, Camp Wekiva
 April 11-13, Landscape Design Course, Series 10, Course 2, Tampa
 April 18-20, Landscape Design Course, Series 9, Course 4, Miami
 April 19-22, Florida State High School Science Fair, Niceville
 April 25-26, Spring Symposium, Pensacola
 May 9-11, HANDS Workshop, Winston Salem, N.C.
 May 17-18, FFGC Convention, The Plaza, Daytona Beach
 June 4-8, NCSGC Convention, Michigan
 June 18-July 29, Camp Wekiva Summer Session
 August 6-9, "SEEK" Conference

1979:

April 18-19, FFGC Convention, District XI, Diplomat Hotel, Hollywood
 May 6-13, NCSGC Convention, New Orleans, Louisiana

1980:

May 1-2, FFGC Convention—Dutch Inn, Lake Buena Vista

**DEADLINES FOR
 March-April Issue**
 Advertising—January 15
 Editorial—January 15
 Circulation—February 1

The Florida GARDENER



Official Publication of the Florida Federation of Garden Clubs, Inc.
a non-profit organization
 Member of National Council of State Garden Clubs, Inc.

Headquarters: 1400 Denning Drive, Winter Park, Fla. 32789
 Mailing address: P.O. Box 1604, Winter Park, Fla. 32790
396 CLUBS 658 CIRCLES 29,678 MEMBERS
 10 Probationary clubs—256 Members
 President: Mrs. Dewey R. Villareal, Jr., 4413 Brookwood Dr., Tampa 33609

VOLUME 26

1977

ISSUE 3

CONTENTS

Editor—Mrs. Roger Beattie
 8250 SW 115 Street
 Miami 33156

Circulation—Mrs. Robert E. Mills
 9735 SW 138 Street
 Miami 33176

Advertising—Mrs. Walter C. Neals
 1251 Via Estrella
 Winter Park 32789

Arbor Day	3
Begonias	11
Bromeliad Battle	25
Deep South Convention	18
EE Workshop	15
Facilitators	14
Flower Show Calendar	8-9
Gardening Study School	21
Greening of Government	21
Minutes Resume	10
National Convention	24
New Florida Gardeners	28
Relevant Reading	26
SEEK '78	29
Short Course, Gainesville	4
Tampa Federation	6
Tiger Creek	29
Treasurer's Report	31
Wekiva	12
Young Peoples Page	30

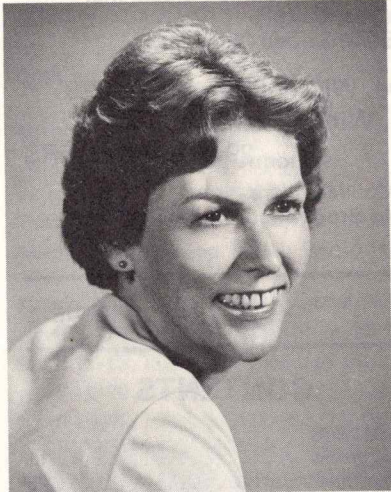
About the Cover

"Munchkin Moon"—a miniature Daylily, (flower of Dist. V). This is a 2-1/2" flower, completely round and flat. The color is yellow to yellow gold, with a smooth wax-like substance and texture. Well branched 16" scapes with good bud count. Photo by: E. A. Hudson, Gainesville, FL.

Published bi-monthly, September through June, 5 times a year, by the Florida Federation of Garden Clubs, Inc., a non-profit organization. Subscription 65c annually, included in dues. \$1.25 per year to non-members, 35c per single copy, 50c single copy of back issues. Second-class postage paid at Miami, FL 33152.

Postmaster: Please mail form 3579 to The Florida Gardener, 9735 S.W. 138th St., Miami, 33176.

MAKING OUR MARK IN 1978—



Was there, among your New Year's resolutions, just one personal commitment to do something about pollution, litter, recycling or conservation? There are over 30,000 of us. It will make a difference. We CAN save the earth!

After the awards deadline this year did you resolve to start earlier in 1978? The time to start is NOW. Start thinking, reading, planning and picture taking.

In the 'something to think about' department, will you re-read the message of our National President in the November/December NATIONAL GARDENER and let your District Director know how you feel about the change in name of our National organization. Perhaps you have a name to suggest. No action is requested of us at this time.

The new year of 1978 brings to our Garden Club calendars room to grow. By this GARDENER you are invited to be a part of several exciting, learning opportunities in FFGC. Tropical Short Course at Barry College and a super En-

vironmental Education Workshop at Wekiva await you, with Gainesville Short Course, Blanche Covington Nature Study Course, Convention at Daytona and Deep South Convention in the offing. Join us at these exciting places to know and grow. There is something in the works for every garden club member.

Two 'grow green' times are in the near future: Florida's Arbor Day and the Greening of Government. Each in its own way will help to make a greener Florida.

Now is the time to begin following pre-filed bills for the 1978 Florida Legislature. We can be a force for good by reading bills pertinent to our interests and forming our own opinions. Our taxes pay for information. Call your local Legislative delegation office and get on their mailing list. There are more Garden Club members in FFGC than doctors and lawyers combined. Think about it!

We have tried to eliminate duplications of paper work by asking clubs to report their activities to their District chairmen, who report to state chairmen. From these latter reports I will be able to give a comprehensive account of the scope of FFGC at our Deep South and National meetings. We do more and do it better. Keep the flow of information bubbling so that the mighty FFGC well spring of activities is recognized for the glory it deserves. We're depending on you.

Mark your 1978 Florida Flower Arrangement Calendar in GREEN ink. From now until June our days will be filled with the fun of getting together, growing together, and knowing each other better through FFGC. I will be looking forward to learning along with all of you. Come on along!

Jean

THE FLORIDA GARDENER

ARBOR DAY

by Mrs. Nathan F. Klein (Anita)
Tree Chairman

In Florida the third Friday in January is ARBOR DAY. In 1978 this day will be January 20th. This has been established as the best time to plant a tree in Florida, as all the elements are in accord to accept this tree.

More than a Century ago ARBOR DAY was launched by a Nebraska newspaper editor as a day to plant trees in the treeless prairie. The thoughtlessness of the early land and building developers in bulldozing trees and shrubs to clear land for housing developments makes all of us in Florida especially aware of this problem. No thought or control was extended to the need of beauty, shade, protection from wind and storms, balance of ecology, the transformation of carbon dioxide into the oxygen we breathe and to prevent soil erosion. All benefits needed to make for better living.

On ARBOR DAY (and on as many other days as you can) plant a tree to commemorate a birth, a marriage, or as a memorial. Plant your tree in a school yard, a Civic Center, or your own garden—anyplace where the tree can be enjoyed by all who see it, it's growth noted and the developing beauty admired.

Before planting give some thought to where the tree can most suitably be placed. Procure your tree from a reputable nurseryman who can assist in selecting a tree best suited to your needs and your area. Dig a hole for the new tree that is three times as large as the container in which the tree is growing. Mix the soil well with peat moss (not Fla. peat) and a carefully selected fertilizer that will not burn the young roots, then fill the hole with water.



While the water is settling, remove the tree from the container, loosen the root ball to straighten and spread the root system. This will overcome any root bound condition that might have developed while the tree was potted. Place the tree in the hole and cover the roots with several inches of prepared soil. Water heavily again, to set the roots, add more soil, taking care to have the soil line at the same line that existed when the tree was in the container. Water again to fully set in the soil. Secure the tree, stake and tie if needed.

For civic planting, select a tree or trees that grow well in your area. You can be more daring in your own garden by trying a specie not commonly found in your area. Others can learn from your experience. Advise us of your success.

It is known that a flowering tree reaches maturity faster than a flowerless shade tree.

Let it be said on this coming ARBOR DAY, January 20th, 1978, that the members of F.F.G.C. have planted trees for posterity, making Florida a "Statewide Arboretum" of great beauty for all to enjoy.

Federation Happenings

SHORT COURSE

"FLORAL FANTASY"

March 20-22, 1978
University of Florida, Gainesville
Reitz Union

Make plans to attend SHORT COURSE, at the J. Wayne Reitz Union, University of Florida, March 20th. Two days crammed with programs planned to stimulate and interest you in the latest methods in all phases of GARDENING, ARRANGING AND SHOWING.

ALSO—plan to FANTASIZE AMONG THE FLOWERS, Tuesday evening at 7:00 p.m. at the Hawaiian Luau, planned for everyone of you at Turkey Creek Golf and Racquet Club—reservations necessary.

MONDAY NOON, MARCH 20th

to

WEDNESDAY NOON, MARCH 22nd

Full Course \$15.00
One Day \$ 7.50
Luau \$ 8.25

MONDAY, MARCH 20, 1978

12:00 Registration, East Gallery, J. Wayne Reitz Union

1:00 Welcome, Introductions and Announcements.

1:15 "THE CREATIVE PROCESS, AND HOW IT WORKS AND WHY"

Bob Thomas, St. Petersburg. Noted authority in the field of Abstract

Floral Art:

4:00 "FLOWERS FOR FLORIDA"

Dr. Benny Tjia, University of Florida.

8:00 "GROWING, SHOWING, SHARING AND LEARNING"

Mrs. Calvin E. Flint Jr. Batesville, Miss. Specialist on Greenery;

Potted Plants to be used in our homes.

TUESDAY, MARCH 21, 1978

8:00 Registration East Gallery, J. Wayne Reitz Union

8:30 Welcome, Introductions and Announcements.

8:45 Workshop "THE HOW, WHY AND APPLICATION OF DESIGN

PRINCIPALS TO FLOWER ARRANGING."

Bob Thomas, St. Petersburg.

8:45 "BONSAI" An Oriental Art.

Paul Burdick, Gainesville.

9:45 "TOPIARY, ESPALIER"

Dr. Charles Midcap, University of Florida.

10:45 Break

11:00 "FLORIDA LAWN GRASSES, THEIR USE AND CARE"

Dr. Harry Meyers, University of Florida.

12:30 Lunch

2:00 "CREATIVE CONTEMPORARY CONCEPTS"

Mrs. John W. Knight, Jr. Cuyahoga Falls, Ohio.

Author, International Lecturer and National Council Symposium

Instructor.

4:15 "GROWING ORCHIDS IN FLORIDA"
Dr. Tom Sheehan, University of Florida.
7:00 Luau—Turkey Creek Golf and Racquet Club.

WEDNESDAY, MARCH 22, 1978

8:00 Registration, East Gallery, J. Wayne Reitz Union

8:30 Welcome, Introductions and Announcements.

8:45 "CONTEMPORARY TABLE SETTINGS"

Miss Patricia Kroh, Sarasota, Florida.

Miss Kroh is an Author, Flower Show School Instructor and Master

Professor of Ikebana

10:30 Break

10:45 Workshop—Patricia Kroh (limit 20)

10:45 "VEGETABLE GARDENS" James Stephens. University of Florida.

11:30 "LANDSCAPING OUR HOMES" William Barrick, University of

Florida.

1:30 Greenhouse Tour. (on your own)

Adjourn

Pre-registration Form-

1978 Garden Club Short Course

Name _____

Address _____

Please check: _____ For entire course \$15.00
_____ One day only, (specify day) \$7.50

Pre-registration form for Hawaiian Luau; March 21, Tuesday, 7 O'clock.

Name _____

Address _____ Zip _____

\$8.25 Attendance by advance reservation only.

Make checks payable to: Florida Cooperative Extension Service.
Mail to: Dr. Robert Black, 119 Rolfs Hall, University of Florida, Gainesville 32611.
Cancellations must be received by March 15 for full refunds.

HOUSING:

Motel reservations should be made immediately. A block of 50 rooms has been reserved at the Plantation Inn, 1901 SW 13th St., 32601. Telephone 376-2222. These rooms will be held until March 1. There are also two Howard Johnsons, a Holiday Inn, Ramada, Flagler and many other available motels. If you have your own transportation, you may park in the lot adjacent to the south of the Union or in the area just south and across the street from the Union parking lot.

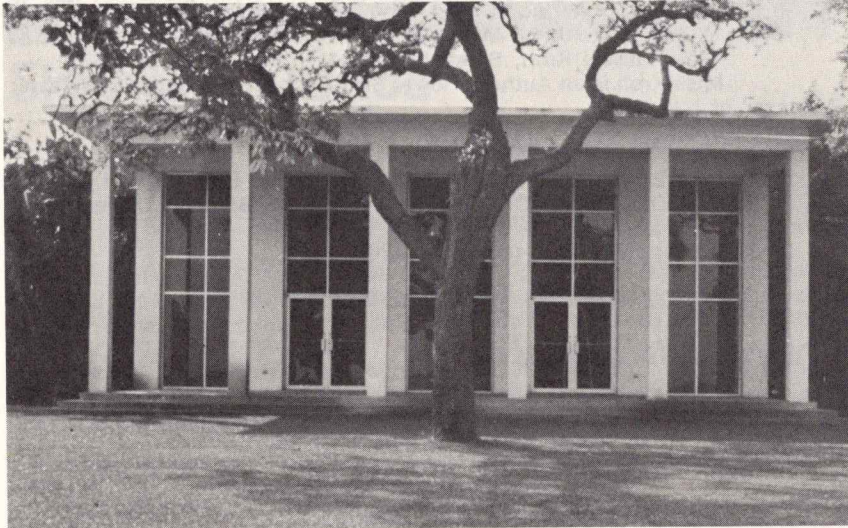
Those electing to take a workshop should bring their own clippers, needlepoint holder and container. A limited number of these will be for sale. Also bring small plate (Salad or B and B) napkin and place mat.

For further information please contact Mrs. Earl H. Killgore, 2200 NW 11th Ave., Gainesville, Fla. 32601. Short Course Chairman Telephone 376-4915.

JANUARY/FEBRUARY 1978

5

TAMPA FEDERATION CELEBRATES ITS 50th YEAR!



Tampa Garden Center

by Mrs. C. Verne Klintworth
Publicity Chairman, Tampa Federation

Fifty years is a long time in anyone's life, and fifty years for the Tampa Federation of Garden Club Circles has been fifty years of progress.

The ten original Circles formed in 1927 met to organize the Tampa Federation on January 31st, 1928. Mrs. Sheldon Stringer who served as the first Federation President, resides at 2401 Bayshore Blvd. and is a member of Founders Circle.

The Garden Clubs have been a vital force in the planting and preservation of the Parks and Parkways of Tampa and Hillsborough County, and promoted ordinances for protecting trees and the landscape. Many members serve on various civic boards.

The first Garden Center was referred to as "The Little House." It was sold in 1948 and property was purchased on the Bayshore. It was a two story buff brick house with 140' frontage on Bayshore Boulevard. Money received from the sale of "The Little House" plus ten dollars (\$10.00) per member over a period of four years, plus private donations paid for the property. Later two lots adjoining the property were purchased, and in 1968 a new Garden Center was dedicated. This center has served the Community as a meeting place for Civic and Horticultural groups, Flower Shows, Symposiums, Flower Show Schools, and many other activities.

Now, on the 50th Anniversary, January 31st, 1978 a big celebration is planned, and the mortgage on the Garden Center will be burned. It would be unwise to mention names for this has been a complete Federation project supported by the Community. It was needed, it still is needed, and it reveals what can be done when everyone joins hands and participates joyfully.

We are going to have a Happy 50th Anniversary!!

FOURTH ANNUAL CASTLES AND GARDENS TOUR

22 Days—\$1785.00
May 19-June 10, 1978

PERSONALLY ESCORTED BY VIRGINIA KNOPKE—FROM TAMPA TO TAMPA

ENGLAND—SCOTLAND—IRELAND
(GROUP LIMITED TO 30 PARTICIPANTS)

Our most popular tour, more fabulous than ever! More time in London! The world-famous Chelsea Flower Show! Castles, deluxe hotels and country mansions for overnights!

INCLUDES

- Trans-Atlantic via National Airlines jet. Return from Ireland via Aer Lingus jet to New York City, and National Airlines to Tampa.
- Surface transportation via private, deluxe motorcoach.
- Deluxe, twin-bedded rooms with private bath.
- Full breakfasts (except continental breakfasts in London).
- Fabulous dinners (except in London and Dublin where your own tastes and choices prevail).
- Marvelously beautiful and interesting sightseeing.
- All entrance fees.
- Portage, service charges and taxes.
- Pre-registration in all hotels, castles and country mansions.
- And **SPECIALS:**

Admission to Chelsea Flower Show
Boat trip to Garnish Island
Scottish Dinner Night
Irish Cabaret
Medieval Banquet at Knappogue Castle

- Per person, double occupancy. Limited single supplements available. Price subject to change (but not expected).

Mrs. Virginia Knopke
Suite 103
Barnett Bank Building
Tampa, Florida 33602

Dear Virginia:

Please send me more information and an itinerary of the **FOURTH ANNUAL CASTLES AND GARDENS TOUR.**

Name: _____

Address: _____

City, State
and Zip: _____

Telephone: _____

FLOWER SHOW CALENDAR

Mrs. D. O. Foshee, Sr., *Flower Shows Chr.*
9744 Scott Mill Road
Jacksonville 32217

(Please register your shows with this chairman)

- January 21-22, Plantation, PARADE OF HOLIDAYS, Deicke Auditorium and Community Center, 5555 Palm Tree Rd., Plantation
January 28, Marathon, Tour of Homes (5) Marathon G.C.
February 19-20, Stuart, NATURE'S BOOKSHELF, Garden Club of Stuart, Martin County Library, 701 E. Ocean Blvd.
February 23-24, Avon Park, SHOW TIME ON THE MALL, Avon Park Garden Clubs, Mrs. O. F. Laye, Chr.
February 25-26, New Port Richey, TRAVELOGUE 1978, New Port Richey Garden Club at West Pasco Art Guild, Jefferson and Madison Ave., Mrs. Thos. Hunter, Chr.
March 3-4-5, Key West, FANTASIA, Key West Garden Club at Garden Center, White St. and Atlantic Ocean
March 4-5, Lehigh Acres, LEHIGH ACRES TRANSPLANTS Garden Club at Auditorium
March 8, Winter Park, SPRING '78, Winter Park Garden Club at Garden Center, Mrs. Jo Stone, Chr., 624 Balmoral Rd., Winter Park 32789
Winter Park, YOUNGER THAN SPRINGTIME, Winter Park High School Gardeners
March 9-10, Palmetto, FLOWER SHOW, Palmetto Garden Club at Woman's Club, 910 - 6th St., W., Mrs. Ralph Gardner, Chr.
March 10, Hollywood, Spring Flower Show, Hollywood Garden Club at Garden Center
March 11-12, Panama City Beach, THROUGH THE GARDEN GATE, Gulf Beach G.C. at Garden Center, Mrs. C. E. Littlefield, Chr.
March 17-18, Boca Raton, GOOD ENOUGH TO EAT, Boca Raton Garden Club, 4181 N.W. Third Ave., Mrs. Buford E. Hiles, Chr.
March 18, Lighthouse Point, SPRING FLOWER SHOW, Seagrape Garden Club
March 18, Dover, IN THE GARDEN, Dover Garden Club, Dover United Methodist Church
March 18-19, Sarasota, SPRING FLOWER SHOW, Sarasota Garden Club at Garden Center
March 18-19, Clermont, DAWNING OF A NEW CENTURY, Clermont Garden Club, 849 W. Ave.
March 20, Tampa, MOTHER NATURE- SEZ, Clearfield Garden Club at Clearfield Recreation Center, Clearfield and Indiana Aves., Tampa, Mrs. A. A. Keith, Chr.
March 20-21-22-23-24-25, Eustis, LAKE COUNTY TRAVELOGUE, Lake County Fair Grounds, Lake County Council of Federated Garden Clubs, Mrs. David Mathews, Jr., Chr.
March 23, Chipley, THE WAY WE WERE, Chipley Garden Club at Woman's Club, Mrs. Hubert Cope, Chr.
March 30-31, Belleair, GARDEN REFLECTIONS FOR THE SEASONS, Belleair Garden Club at Florida Gulf Coast Art Center, Mrs. John H. Becker, Chr. 1714 Magnolia

- March 30-31, Brandon, FLORIDA—IT'S BEAUTY AND WONDER, Valrico Garden Club, First Baptist Church of Brandon
March 31-April 1, Bradenton, 1978 SPRING FLOWER SHOW, Manatee River Garden Club at Garden Center
March 31, April 1-2, Miami, THIRD CENTURY . . . COLOR AND DESIGN, Metropolitan Flower Show, at Hialeah Race Track
April 1-2, Palatka, SPRING FLOWER SHOW, Garden Club of Palatka at Garden Center
April 1-2, Palm Springs, CAVALCADE ROUND THE SOUTH, Palm Springs Garden Club at Kirklane School
* April 5, 6, Clearwater, AMERICANS IN PURSUIT OF HAPPINESS, Clearwater Garden Club at Garden Center, Mrs. E. H. Smith, Chr.
April 6-7, FLOWERS MAKE SENSE, Indialantic By-The-Sea, Garden Club By-Sea at East Minister Presbyterian Church, Mrs. R. H. Clark, Chr.
April 6-7, Naples, ANNUAL FLOWER SHOW, Naples Garden Club at Trinity-by-the-Cove, S. Prym Chr. 900 Spyglass Lane, Naples
April 7-8, Gainesville, LET'S APPRECIATE, Gainesville Garden Club in the Gainesville Mall, Mrs. Stephen Gottesman, Chr.
April 8-9, Bartow, SPRING FLOWER SHOW, Bartow Garden Club at Bartow Civic Center
April 8-9, Winter Haven, SPRING FLOWER SHOW, Winter Haven Council of Garden Clubs at Garden Center, Third St. N.W., Mrs. W. B. Lemons, 1330 E. Lake Cannon Dr., Chr.
* April 13-14, Punta Gorda, A WORLD OF ART AND FLOWERS, Punta Gorda Garden Club at Charlotte Civic Center, Mrs. O. Simpson, Jr., Str Rte A Box 43-b Punta Gorda 33950, Chr. *
April 14, Pompano Beach, SPRING FLOWER SHOW, Pompano Beach Garden Club
April 15-16, Daytona Beach, EVERYBODY'S FLOWER SHOW, Council of Garden Clubs of Halifax District at Wm. A. Finney Memorial Garden Center, 837 N. Oleander Ave., Mrs. Alberto M. Galliano, Chr.
April 15-16, Lakeland, FLOWERS ALA MOOD, Garden Club of Lakeland at Garden Center, 802 E. Orange St.
April 15-16, Plant City, GARDENER FLOWER SHOW CALENDAR, Plant City Garden Club at Garden Center, 1112 N. Wheeler St., Mrs. Sharon Tyson, Chr.
April 15-16, Rockledge, WITH A SONG IN YOUR HEART, Cocoa-Rockledge Garden Club at Garden Center, 1493 Fiske St., Mrs. Geo. Wells Co-ordinator
April 21-23, Sanford, MEMORIES, Garden Club of Sanford at Sunland Highway 17 at 92
April 21-22, Jacksonville Beach, A SYMPHONY IN BLOOM, Ribault Garden Club at Garden Center
April 22-23, Panama City, FLOWERAMA AROUND THE WORLD, Panama City Garden Club at Garden Center
April 22-23, Coral Springs, SPRING FLOWER SHOW, Coral Springs Garden Club
April 29-30, Melbourne, WEATHER RHYTHM, Melbourne Garden Club at Trailer Haven Auditorium, Mrs. R. B. Parsons, 1216 Burtonwood Rd., Chr.
May 14, Tarpon Springs, MOTHER, QUEEN FOR A DAY, Garden Club of Tarpon Springs, at Tarpon Springs Yacht Club, Mrs. Jack Newnam, Chr.

* Denotes change in date

Resume of Minutes

Mrs. Melville Hall,
Resume Chairman
Board Meeting, September 20-21, 1977
Headquarters, Winter Park

Members of the Board of Directors:

Heard President Mrs. Dewey R. Villareal report on visiting Wekiva Youth Camp three times during the five weeks of camping, attending a 5-day U.S. Forest Services Environmental Education Facilitators Workshop in Crossnore, N.C., the 1977 SEEK (Save The Earth's Environment Through Knowledge) Conference at Florida Tech. University, participating in a statewide geriatric conference in St. Petersburg and preparing to represent the Florida Federation of Garden Clubs at the National Council Board Meeting at St. Louis in October as well as for the tour of fall district meetings.

Ratified appointment of Mrs. Pierre Thompson as chairman of Books, Slides and Library, succeeding Mrs. Broward McClellan whose resignation was accepted with regret; adopted an amended budget of \$80,673.16, and acknowledged a check in the amount of \$378.00 from Mrs. Virginia Knopke of Knopke Travel Agency.

Heard four National Council and 19 State Life Memberships had been processed since the 1977 convention, a new high school gardener unit with 17 Fort Myers boys as members had been registered and 27 flower shows listed; also that the Bartram Trail had been funded with \$100,000 for a study.

Approved awarding the Taylor R. Alexander Ecology Scholarship to Lynn Diane Dierking, the H. Harold

Hume Fellowship in Horticulture to Donald E. Hanna, and the Elizabeth McCullagh Memorial Scholarship to Maurine Frances Dusch for the 1977-78 academic year; and ratified establishment of the Polly Moody Memorial Youth Scholarship.

Federated Friends and Flowers Garden Club of Fort Myers, IX, and Kendale Lakes Garden and Beautification Club, XII; accepted for probation Destin Garden Club, I, and Olden Days Garden Club of Lutz, VIII, both first readings, and Indian Town Garden Club, X.

Accepted the resignation of Tam O'Shanter Garden Club, XI; heard first readings of resignations of Sunbonnet Garden Club and Forget-Me-Not-Garden Club, both I, Periwinkle Garden Club of Satellite Beach, VI, and Temple Crest Garden Club of Tampa, VIII; also heard the Daylily Club of Pensacola Federation of Garden Clubs, I, and The Woods Circle of Garden Club of Jacksonville, IV, announced as new circles and the resignation of Pine Tree Circle of Garden Club of Sebring, IX.

Accepted International Tropical Fern Society of Miami, XII, as an affiliate member.

Adopted resolutions requesting the Florida Department of Transportation to designate Highway 20 as Blue Star Memorial, and Governor Reuben Askew to proclaim March and April as "Keep Florida Glitter Clean" Months.

At the Florida Federation of Garden Club's September board dinner Mrs. Robert Stone received an award for her activity as an environmentalist. She is chairman of the state environmental youth conference program, and this past summer held the fifth conference at Florida Technological University. It was called SEEK '77, meaning "Save the Earth's Environment through Knowledge." This was the first regional youth conference and was attended by 188 high school students.

The Environmental Systems Management of Fla. Tech. Un. presented her with a plaque as their environmentalist of the year.

BEGONIAS

by Mrs. E. R. Hunter
Improved Cultivars Chairman

One of the most spectacular of the improved cultivars to burst upon the house-plant scene during the 1970's has been the Rieger Elatior begonias. These plants are a development in the hybridization of the tuberous and B. Socotrana types by Otto Rieger of Nürtingen, Germany. They were introduced into this country by Mikkelsens of Ashtabula, Ohio, which has distribution rights for this patented begonia.

The most striking feature of the Riegers is their lovely tuberous-type flowers. These are usually quite large with colors that are clear and brilliant. They were such an instant success when introduced into this country that nurserymen had a difficult time keeping their stock supplied.

In Florida, alas, we have a more difficult time maintaining these plants on a year-round basis. Our climate is too humid for the Riegers as it is for their forebears, the tuberous begonias. Riegers prefer a relative humidity of 30-40% and a temperature around 68-70°. Many enthusiastic growers have not been deterred by these hard facts and some of them have been successful in carrying these begonias through our hot, damp summers. In general, however, it is less frustrating to follow the example set by most nurserymen—buy them in the Fall and enjoy these begonias as a spectacular but ephemeral annual plant.

Those who would like to try their luck should use a very light soil—at least 25% peat moss. Water in the morning and **only** if the plants are dry. Keep the foliage dry at all times and keep a good air circulation around the plant to prevent mildew. At the end of their flowering cycle look for new bottom growth. When this appears, cut the plant back to

about 4 inches, fertilize with osmocote and await a new growth cycle. The removed pieces may be rooted.

There are many other new begonia cultivars which are easier for us to grow. For instance the many Bowerae hybrids grow well here as do the new rhizomatous miniatures.

Some of the Bowerae hybrids are Bow-Nigra, Bow-Chancee and Bow-Zip. In the miniatures, China Doll and Baby Rainbow are among the smallest.

We are fortunate in having an active branch of the American Begonia Society in Miami, and in most recent years a Begonia Show has been held in the Spring at the Fairchild Tropical Garden. This year we are looking forward to an even more exciting event. The Miami Begonia Society will be host to the Eastern Seaboard Begonia Convention, April 13-15. A show will be featured.



WEKIVA '78—Sure to be great!

by Mrs. E. W. Johnson
Camp Director

FFGC Wekiva Youth Camp is a dream come true for youngsters interested in any form of nature. Here's a chance for them to LIVE it for a week. Nature walks, handcrafts using natural materials, swimming, special programs by State resource people, simple sports, all take place in beautiful Wekiwa Springs State Park just outside Orlando.

Modern cabins, large dining hall, crafts-recreation building, pavillion, and an office-infirmary comprise the physical set-up; garden club women with special, outstanding talents do the teaching; competent college and high-schoolers live with, and lovingly care for, the Campers.

CHANGES from previous years have been made for '78 because we try to meet needs as they arise and as Camp becomes more widely known around the state.

1. Usually there are two weeks for boys, followed by three weeks for girls, but there were so many disappointed children last year, we're going to add another week to the camping sessions, taking advantage of the physical layout—completely separate facilities comprising six cabins on one side of the dining hall and seven cabins on the other side. The third week of Camp, inserted between the two weeks for boys and the three weeks for girls, will be a "mixed," or co-ed, session for 3rd, 4th, and 5th graders ONLY.

2. Many Intermediate Gardeners in the 8th grade were not eligible for our 3rd through 7th program, and did we ever hear from them and their leaders! So, in '78 we're inaugurating a special advanced program for them. Boys in 8th grade ('77-'78 school year) will be eligible for Camp during the June 25-July 1 session, and girls in 8th grade ('77-'78 school year) will be eligible

during the July 16-22 session.

The reason we're going into a bit of detail here is so you'll pay special attention to dates and grades below. ALL GRADE LEVELS referred to mean during the '77-'78 school year. THE WHEN of Camp:

Boys' session

June 18-24, Grades 3,4,5,6,7

June 25-July 1, Grades

3,4,5,6,7,8

Boys-Girls

July 2-8, Grades 3,4,5

Girls' Session

July 9-15, Grades 3,4,5,6,7

July 16-22, Grades 3,4,5,6,7,8

July 23-29, Grades 3,4,5,6,7

IN SELECTING children, please choose leader-types, who will be able to absorb what we offer and share this knowledge when they return home.

THE FEE, because we are self-supporting, has been raised to \$50.00 this year, still way under comparable camps, but with generous donations from clubs all over the state, we think we can "make it" and still keep our program top notch. Less than the best wouldn't satisfy any of us, would it?

BROCHURES, which contain application blanks, are available from the Registration Chairman:

Mrs. Edward J. Storey

4519 W. Tradewinds Ave.

Lauderdale-by-the-Sea 33308

You may know, when you sent for the brochure, exactly whom you are going to send to Camp, and will see that application and fee are sent early. However, if you aren't sure which child your group will send, choose a week, send the camp fee, along with the name of your club and ask that space be held. (No fee, no space saved.) As soon as you can, send name of child and follow it with completed application as soon as possible. Mention name of your club or circle in all correspondence.

WE NEED:

Adult Volunteers to teach nature study, ecology, environmental education or nature crafts; nurses; canteen managers.

Counselors—male and female who have completed 11th grade and up.

Junior Counselors—male and female who have completed 10th grade.

Counselors-in-Training — male and female who have completed 9th grade. Adults may sign up for one or two weeks. Male senior and junior counselors come for two weeks; female senior and junior counselors

come for three weeks. All CITs come for one week. Exceptions to the above are the few counselors we will need for an extra week during the co-ed session.

Please write Mrs. E. W. Johnson, 2671 N.E. 19th St., Pompano Beach, 33062 concerning staff positions, with offers OR suggestions of people who could fill these needs" or for information concerning staff. We know there are great people all over the state who would do a great job at Camp, but we don't know your name or talents!

Daffynition: Gardening: A matter of your enthusiasm holding up until your back gets used to it.



THE NATCHEZ PILGRIMAGE

Natchez-On-The-Mississippi
March 4 through April 2, 1978
35 Ante-bellum Houses Open

CONFEDERATE PAGEANT

Monday, Wednesday, Friday
Saturday nights

HOUSES BY CANDLELIGHT

Sunday, Tuesday, Thursday nights
For information about group or individual tours, write
P.O. Box 347
Natchez, Mississippi 39120

NATIVE

Shade Trees, Shrubs,
Wildflowers,
Trees for home,
street or subdivisions
Rare and Familiar Shrubs
for Home Gardens
Wildflowers for Spring,
Summer and Fall

60 Species in Stock
Inquiries Welcome

SALTER TREE FARM

CHARLES E. SALTER,
Owner

Rt. 1, Box 1332 Madison,
Florida 32340

Phones

(904) 6312 Madison
(904) 385-5210 Tallahassee

FACILITATORS AT FALLS CREEK



Mrs. William J. Hedley, president NCSGC; Mrs. Vernon L. Conner, past president NCSGC; Mrs. Robert Stone, Deep South High School C'man; Mrs. John G. Wood, First Vice Pres. FFGC and Mr. Herman Moore, Public Relations Director, International Paper Co.

Recently garden club members from 42 states attended a five day intensive training program for Environmental Education Workshop Facilitators at Falls Creek State Park in Tennessee.

Attending were three members of the FFGC.

The program was sponsored by the National Team of the National Council of State Garden Clubs and co-sponsored by Shell Oil Company and the International Paper Company.

The Florida representatives will be part of a regional team of facilitators who are planning on a Deep South EE Workshop which will be held in Mississippi with Mrs. Thomas Lacey as chairman.



**CAN YOU GROW ROSES
IN FLORIDA? . . .**
YES!, if they're NELSON'S
on Rosa Fortuniana rootstalk (Double Cherokee)

Nelson's Florida Roses

Rt. 1, Box 164 • Apopka, FL. 32703 • 886-3111
Available only at leading nurseries

F.F.G.C. ENVIRONMENTAL EDUCATION WORKSHOP

Wekiva Youth Camp
Wekiwa Springs State Park
Feb. 28, March 1,2,3, 1978

If you missed it last year, don't miss this golden opportunity this coming year!! Once again the Florida Federation of Garden Clubs and the U.S. Forest Service is presenting this unique workshop whereby you will be given the chance to learn the educational methods which help individuals develop the skills and motivation to interact with their environment at different levels. You also will have the chance to qualify to become an Environmental Facilitator for the F.F.G.C.

This year the workshop is being opened further to a mixed group—members of garden clubs, teachers, students (11th and 12th, college), Audubon Society, representatives of state and federal agencies . . . men, women . . . couples . . . youth . . . all will be welcome. Just give us advance notice so that the facilities may be set up to accommodate you.

Come join us for this learning opportunity . . . this "fun" experience! Opportunities are few and far between . . . so don't miss this one!! Register now while you are thinking of it. Use registration form below.

REGISTRATION FORM

Deadline: Feb. 15, 1978

Name: _____

Address: _____

City: _____ State: _____ Zip: _____

Affiliated with: (Club or Organization)

Cost: \$35.00 (this includes room, meals and all materials)

Make check payable to: FFGC - EE Workshop

Mail to: Mrs. C. W. Griggs, 941 N.E. 159th St.,

North Miami Beach, Florida 33162

"Schultz-Instant"
LIQUID PLANT FOOD
10-15-10

Concentrated, High Analysis — All Purpose — 10-15-10 "Starts and Feeds" all Plants Indoors and Outdoors.

Available at your store or send \$1.00 for 5 1/2 oz. \$2.00 for 12oz (includes mailing).



"Schultz-Instant"
SOLUBLE FERTILIZER
20-30-20

Concentrated, High Analysis — All Purpose — 20-30-20 crystals. Grows Vegetables, Flowers, Roses, Trees, Shrubs, Lawns, Etc., in Yards, Gardens, Greenhouses.

Available at your store or send \$6.95 for 5 lb (includes mailing).



SCHULTZ CO. — St. Louis, MO 63043
SEND FOR OUR FUND RAISING OFFER

You can count on us.

Southeast First National Beach Bank
222 North Second Street
Jacksonville Beach, Florida 32250 (904) 249-2323



Member FDIC

Checkerboard Chatter of and about Gardening

SEAFARING SYMPOSIUM

FFGC is planning a symposium aboard a cruise ship, which will sail to Puerto Plata, St. Thomas, San Juan, and Nassau. The ship will depart from Port Everglades on Nov. 4, 1978 and return Nov. 11th.
WATCH FOR MORE INFORMATION IN FUTURE ISSUES OF THE GARDENER.

CUTTING CAPERS

When rooting cuttings in water, as the roots form, try adding potting soil gradually. There should be less casualties of transplanting.

SLUGGING THOSE SLUGS

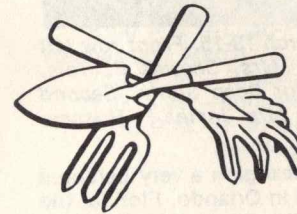
Slugs seem to have a passion for old potatoes. Leave some potatoes on a paper plate in the evening. Next morning potatoes, plate and slugs can all be tossed out.

WARM RECEPTION FOR SEEDS

Start seeds by placing the flats on top of the TV set. It is always warm, even when turned off, so the temperature is uniform. The top of the water heater and refrigerator would also be other good locations.

TOPSY-TURVY TRANSPLANT

Tin cans with plastic tops (such as coffee cans) are ideal for temporary growing of plants. Cut the bottom out of the can. Cut a few holes in the plastic lid. Put the lid over the bottom end, fill can with soil and plant. When ready later to transplant to the garden, run a knife around the inside of the can to loosen, take off the plastic bottom, and push the plant out undisturbed.



WAYS AND MEANS

The following items are available from FFGC Headquarters at PO Box 1604, Winter Park, FL 32789. Support your Headquarters building by placing an order!!
Garden Gadgets—aluminum ea. 2.60 (shovels, digs, rakes)
10 or more ea. 2.08
Membership pins—
1-1/2 in. gold filled ea. 17.68
Scissors, German folding ea. 2.56
12 or more ea. 2.08

FLOURESCENT FILM

A new 15 minute film called "Gardening with Light" can be borrowed by garden clubs from the Public Affairs Dept., GTE Sylvania, Inc., Sylvania Lighting Center, Danvers, MA 01923. This film discusses use of flourescent and high intensity discharge lamps for plant growth. Borrowers pay only return postage cost. When ordering, request 1 prime and 2 alternate showing dates.

WHITEFLY WOES

Whiteflies are persistent and difficult pests, especially among house plants. A new control method consists of hanging near susceptible plants, a yellow-painted card that has been coated with the tacky substance used for banding trees. The whiteflies are attracted to the yellow color (Rustoleum #659, to be exact), fly into the stickum, and are stuck for good.

GARDEN THERAPY

A prominent physician stated that 85% of his patients could be cured with Garden Therapy. Numerous projects in Garden Therapy can help enrich the lives of the handicapped and fill the hunger of the soul.

MORE WAYS AND MEANS

Paper weight—white marble, FFGC insignia, with place for engraving ea. 5.00
Certificate—for special awards ea. .50
1 free with ea. .10
Ask for more information concerning flower arranging items such as: Oasis, waterproof tape, Cling, floral adhesive, wire, pin holders, etc.

DEEP SOUTH CONVENTION

"IN HARMONY WITH THIS PLANET EARTH"



Making plans for the 1978 Deep South Convention, March 13-15. Front row left to right—Mrs. D. R. Villareal, Jr., President FFGC; Mrs. Charles F. Vale, Convention Chairman; Mrs. Carroll O. Griffin, Director Deep South. Second row—Mrs. John D. Grathwol, Convention Vice Chmn.; Mrs. James F. Hussey, Registration Chmn.

It is my pleasure to extend to each member of our region a very personal invitation to attend the Regional Convention to be held in Orlando, Florida, the Action City, at the beautiful Carlton House (now Holiday Inn), March 13-15, 1978.

This is your opportunity to come and exchange ideas, to renew friendships and make new ones, to share in the fine programs that are planned especially for you and to enjoy the fine tours.

Our First Lady of National Council, Mrs. William J. Hedley will be our honored guest and as an extra bonus, our own past presidents of National Council, Mrs. Vernon L. Conner and Mrs. Charles O. Dean will be there.

The red carpet is out and we urge each of you to come. Won't you join us?
Fondly,
Mrs. Carroll O. Griffin
Director

The men and women of the Florida Federation of Garden Clubs, Inc. are eagerly anticipating your meeting with us. Near our convention hotel are FFGC's State Headquarters, Wekiva Youth Camp and FTU, where our high school SEEK conferences are held. The fun of Disney World and the Beauty of Cypress Gardens are included in our plans for your entertainment.

March is a beautiful time in Florida. How can you resist our invitation to join us in March of 1978? We are looking forward to having you.

With joy and anticipation,

Mrs. Dewey R. Villareal, Jr.

President Florida Federation of Garden Clubs, Inc.

P.S. You need not be an elected delegate or alternate to attend—everyone is invited and a great meeting is planned for YOU!

TENTATIVE PROGRAM

Sunday, March 12

Program meeting for all Flower Show Instructors, Flower Show Judges and Landscape Design Critics and Appraisers.

Monday, March 13

8:00 A.M.—"EARTH BOUND FANTASY" A Day of Adventure at Walt Disney World. This is an optional tour limited to first 200 Registrants. Price . . . \$17.50 including program, luncheon and fashion show.

5:30 P.M.—Regional Council Board Meeting

7:00 P.M.—Regional Council Board Dinner. Host—John Balalock, Sears Roebuck Co.

8:30 P.M.—Program for Early Arrivals—"IT'S FOR THE BIRDS"

Tuesday, March 14

8:00 A.M.—"THIS FRAGILE EARTH." Cram Sessions

9:30 A.M.—Formal Opening of Convention

12:30 P.M.—Luncheon—"FINE TUNING—BEAUTIFUL TONES"
Program—Florida Council of Flower Show Judges

2:30 P.M.—Business continues

4:30 P.M.—"TERRA REDISCOVERED"—Horticulture Program

8:00 P.M.—Luau-Poolside. "HARMONIZING UNDER THE STARS"

Wednesday, March 15

7:30 A.M.—Breakfast—"EXPLORING OUR PLANET"—Youth Program

11:00 A.M.—Luncheon and Tour to Cypress Gardens, Winter Haven

7:30 P.M.—Formal Banquet—"CELESTIAL COMMITMENT"

Speaker: Mrs. William J. Hedley

Awards

HUSBANDS PROGRAM

Mar. 13th, Mon. .

7:30 A.M. Get acquainted breakfast

9:00 Golf for the golfers, one of Orlando's finest courses, or tour to Disney planned.

6:00 Mens hospitality room for relaxing and

7:30 Dinner—Lillie Marlins at Good Time Rosie O'Grady's.

Mar. 14th Tues.:

7:30 Special Breakfast

9:00 Tour to Cape Kennedy.

7:00 Hospitality room for get together.

8:00 Luau at the hotel.

Mar. 15th Wed.:

7:30 Special breakfast like you would not believe.

9:00 Tour to Cypress Gardens, including lunch.

8:00 Banquet with our gals.

Carroll Griffin
Chairman Mens Program

REGISTRATION BLANK

March 13-15, 1978

Please check:

- | | |
|---|---|
| <input type="checkbox"/> National Officer | <input type="checkbox"/> State President |
| <input type="checkbox"/> National Chairman | <input type="checkbox"/> Delegate |
| <input type="checkbox"/> National Life Member | <input type="checkbox"/> Alternate |
| <input type="checkbox"/> Regional Officer | <input type="checkbox"/> Club Member |
| <input type="checkbox"/> Regional Chairman | <input type="checkbox"/> Visitor or Husband |

Name _____

Address _____

City _____ State _____ Zip _____

- | | |
|--|--------|
| Registration | \$5.00 |
| Registration, per day | 3.00 |
| Registration, per single event | 1.50 |
| Registration, Husband or Visitor | 1.00 |

Sunday, March 12-Program planned for: Flower Show Instructors _____
 Flower Show Judges _____
 Landscape Design Critics _____

No charge, but please check if attending

Monday, March 13

- "EARTH BOUND FANTASY"
 (Day at Disney World) 17.50
 Regional Dinner
 Special Program for Early Arrivals

Tuesday, March 14

- Luncheon—"Fine Tuning-Beautiful Tones" 5.50
 Luau—"Harmonizing Under the Stars" 11.00

Wednesday, March 15

- Breakfast—"Exploring Our Planet" 4.50
 Tour, Luncheon, Cypress Gardens 15.00
 Formal Banquet—"Celestial Commitment" 12.00

PACKAGE PLAN BEFORE February 20th, 1978 \$50.00

PACKAGE PLAN AFTER February 20, 1978 53.00

No refunds after Feb. 25th

Make checks payable to DEEP SOUTH CONVENTION 1978

Mail Registration blank and check to:
 Mrs. James F. Hussey, Registration chairman
 4444 S. Rio Grande, Apt. #838
 Orlando, Fla. 32809

HOTEL RESERVATIONS

Carlton House Hotel (now Holiday Inn)
 6515 International Drive, Orlando, Florida 32809 Phone 305-351-3500
 Make room reservations DIRECT to Hotel.
 Please check Accommodations Desired
 ___ Single \$25.00
 ___ Double, two double beds or studio \$28.00
 ___ Three persons \$32.00 (two double beds)
 ___ Four persons \$36.00 (two double beds)

Date arriving _____ Departure date _____

Name _____

Address _____

GARDENING STUDY SCHOOL

National Council of State Garden Clubs has launched a new program—GARDENING STUDY COURSES—with the idea that these Study Courses will stimulate interest in Horticulture and the growing of plant materials to their optimum of perfection. The schools will be veritable courses in botany, including soil structure, pesticides, plant diseases and other pertinent topics.

These courses are meant to further the activities of gardeners and bring to them knowledge of basic gardening.

There will be a series of four courses conforming to the standards of National Council.

After taking the four courses, passing the examinations and complying with all requirements, the student will become an Accredited National Council Gardening Consultant.

These Gardening Schools will be a great asset to garden club members and add another jewel to the crown of National Council.

The Garden Club of Georgia announces that it will sponsor COURSE I Gardening Study Course on March 8, 9 and 10th, 1978 to be held in Savannah. For more information write to Mrs. Shelby Myrick, Chairman, 2807 Abercorn Street, Savannah, Georgia 31405

GREENING OF THE GOVERNMENT

by Mrs. Dursie Ekman
 Chairman, Public Relations
 4501 Vasconia,
 Tampa, Florida 33609

There is something new under the sun, at least under FFGC's sun. It is the "Greening of the Government" program. It is simple to participate in, and to have others be a part of this exciting recognition program.

During the week of March 20th through 25th, garden clubs should schedule a ceremony to honor an official for outstanding contributions in governmental affairs. The recipient may be selected from any group of public officials including: Executive, Legislative, or Judicial branches of City, County, State or Federal Government.

The "Greening" could either be a token type, such as a flower arrangement or a plant for the office; or it could be a more permanent type, as the planting of a tree, or a shrub, or an entire area.

Plan now for this special program of appreciation to an official who exemplifies governmental leadership, jurisprudence, awareness and statesmanship. Make sure your publicity includes the name of Florida Federation of Garden Clubs. Let us hear about your activities in this program.

SCANDINAVIAN HOLIDAY

THE CAPITALS - FJORDS - FINLAND

PERSONALLY ESCORTED BY VIRGINIA KNOPKE

TAMPA-TAMPA August 3-22, 1978 \$2424.99

THIS FABULOUS MAUPINTOUR HOLIDAY TOUR INCLUDES:

- Non-stop jet, Tampa / NYC / Tampa.
• Trans-Atlantic via Scandinavian Airlines.
• Two cruises across the Baltic Sea.
• Famed Silverline Cruise on the Vanajanselka
• Cruising five of Norway's fjords, and riding the thrilling Flamsbane and Bergen Railways.
• Deluxe motor coach for land portions.
• 44 meals - 18 full American breakfasts, 12 luncheons and 14 dinners, including tea or coffee and dessert including all luncheons and dinners!
• Fantastic sightseeing!
• Porterage, service charges, even airport taxes!
• An experienced Tour Manager, in addition to the personal escort from Tampa!
• Special parties, dinners, etc., including the Tivoli Gardens and the Circus on Copenhagen!
• Pre-registration in all hotels.
• All transfers for all included tour events.
• Baggage handling for two pieces per person.

PARTICIPATION LIMITED TO 26-30

Per person, double occupancy. Subject to change.

Virginia Knopke
Barnett Bank Building
Tampa, Florida 33602

The SCANDINAVIAN HOLIDAY next August sounds great! Please send me more details!

Name: _____

Address: _____

Zip: _____

Telephone: Area Code _____

OLD OR INCORRECT ADDRESS

You must include 25c with each address change
Please attach last mailing label

NAME: _____ Club Code: _____

Address: _____

City: _____ Zip: _____

NEW ADDRESS

Name: _____

Address: _____

City: _____ State: _____ Zip: _____

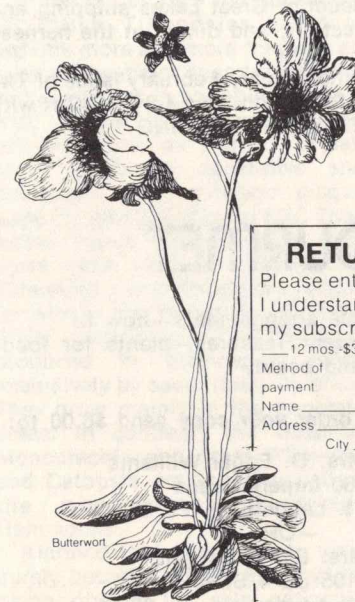
Do you plan to continue your membership in your present club? _____

Mail to The Florida Gardener, 9735 SW 138 Street, Miami 33176

Bartram, the butterwort and EnviroSouth

... a flowering report of our region

The Butterwort was one of many plants in the Southeast studied and recorded 200 years ago by William Bartram, the colonial naturalist/artist. EnviroSouth magazine continually updates the progress of the regional movement to develop a National Scenic Trail in memory of Bartram which will cover portions of North and South Carolina, Georgia, Alabama, Florida, Mississippi, Louisiana and Tennessee. EnviroSouth, the magazine for current conservation issues, focuses on the South's quality of life and balanced growth through a practical application of its many resources.



Butterwort

RETURN THIS CARD TODAY!

Please enter my subscription to EnviroSouth. I understand I will receive quarterly issues. Enter my subscription for:

___ 12 mos - \$3.50 ___ 24 mos - \$6.00 ___ 36 mos - \$9.00

Method of payment ___ check ___ cash ___ money order

Name _____

Address _____

City _____ State _____ Zip _____

Phone _____

Signature _____

This offer applies to Southern States only. Subscriptions outside Southern states \$5 per year. Outside the U.S. \$6 per year. Mail to: ENVIROSOUTH, Department FN, P.O. Box 17111, Montgomery, Alabama 36117.

A TIME FOR GROWING

All members of Garden Clubs are invited to attend the 49th Annual Convention of the National Council of State Garden Clubs, Inc. which will be held at the Detroit Plaza Hotel, Renaissance Center, Detroit, Michigan, on June 4-8, 1978.

It will be an opportunity for members to extend their knowledge of the organization by attending business sessions ... to gather program ideas for their clubs through workshops and educational exhibits ... to share experiences and learn from other Garden Club members, particularly at meal functions where designated table seating will be arranged for everyone.

Complete details ... program and tour information, tour costs, full and part-time registration fees and forms ... will appear in the January-February, 1978, issue of **The National Gardener**. If you are not a subscriber to the magazine, please refer to your Club President's copy.

The Convention program, featuring nationally recognized speakers and groups, has been designed to include something for everyone ... the experienced and the newest member ... the flower arranger, the horticulturist, the landscape designer, the conservationist. The final night's banquet will highlight the presentation of National Awards for club, individual and group achievements.

Workshops are being planned to cover: ACE (Environmental Program), Awards, Flower Shows, Judges, Flower Show Instructors, Horticulture, Publicity, Photography and Calendar.

Optional tours have been arranged: all-day tour for Landscape Critics; all-day visit to the Greenfield Village and Edison Museum ... a unique combination of outdoor and indoor museums presenting a pictorial history of America's life over the past 300 years; an international experience ... a morning tour of Canadian gardens; a 5-day, 4-night tour of the state of Michigan.

The husbands' entertainment package features; a tour of a steel mill and assembly plant; visits to a brewery, a museum of Great Lakes shipping and naval history; an atomic electric plant inspection; and dinner at the harness races.

We encourage ALL members to consult the January-February issue of **The National Gardener** and plan now to COME to Detroit on June 4-8 ... JOIN with other Garden Club members in exploring "A TIME FOR GROWING."

GARDEN GOURMET

The Pachira Garden Circle of Ft. Lauderdale Garden Club has just published a new cookbook. The **OUTSTANDING** feature of it being that all the proceeds from sales will provide scholarships to Camp Wekiva as well as furthering the Youth Program of FFGC.

Beside the delectable recipes, the book also includes a section in the back of the following items:
Menus and interpretive flower arrangements

Table arrangements—how to
Garden Treasures—plants for food
and beauty

To order your copy send \$6.00 to:

Mrs. O. Edgar Williams
260 Imperial Lane
Ft. Lauderdale, FL 33308

—OR—

Mrs. Emmy Dwight
1105 SE 4 Street
Ft. Lauderdale, FL 33301

THE FLORIDA GARDENER

A BATTLE FOR THE NATIVE BROMELIADS OF FLORIDA

by Maureen S. Frazel
Conservation Chairman, District XI

On arriving in South Florida from Canada the epiphytic plant material in the native trees was most intriguing. It was several years later that I really grew more interested in them when I joined a Garden Circle whose concern was in the protection of the native plants. Gradually identification of the native Bromeliads was accomplished by helping set up displays at flower shows. Most native Bromeliads are Tillandsias. All Bromeliads are protected by law except Tillandsia Usenoides (Spanish Moss). A few of the plants were offered for sale by the Seminole Indians, within the provisions of the plant law.

In order to become better informed concerning Bromeliads my husband and I joined The Bromeliad Society of Broward County, Inc.

In the fall of 1975 the appearance of native Tillandsias suddenly became more and more frequent and soon all the major department stores and Boutiques in shopping malls as well as the "flea markets" were offering these "air plants" for sale. Many plants in decorative shell containers and driftwood plaques were for sale at prices to \$60. These native plants require about seven years from seed to maturity. The Tillandsia most frequently offered for sale is the Tillandsia Utriculata. This particular Tillandsia is produced in abundance almost exclusively by seed, rarely by offset. They grow mainly in the populated areas. In contrast, the Guzmania Monostachia and other Tillandsias and Catopsis are found usually in the more remote Everglades Hammocks.

Alarmed that these plants would surely become extinct as they were being offered for sale nationally,

support was enlisted from the Garden Clubs and Bromeliad Society of Broward County. The battle was to begin.

After investigation it was found that most of these plants being offered for sale to the Boutique shops were accompanied by some sort of permit to gather, which was one of the exceptions to the native plant law. A meeting was held in the summer of 1976 with representatives from the Department of Agriculture of the State of Florida. We put forth the interpretation of the law that would only allow the person with the permit to sell the plants. In other words they would not be allowed for resale.

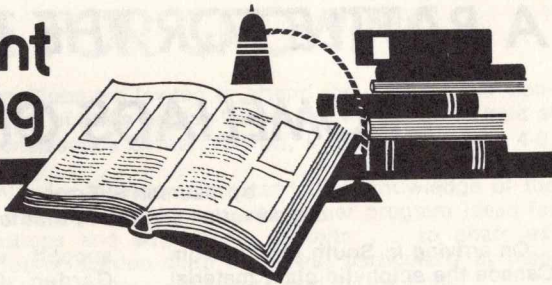
A request was made for a ruling by the State Attorney General. His interpretation was that if once obtained legally they could be resold. However, since our roadside and public parks are also being denuded, then we are assuming that the permit to gather in remote places was also being used on public and private lands, to satisfy the latest fad. There has been an arrest made on the complaint of a Condominium owner.

Recently a bill (Senate Bill #26) has been filed, which would exclude the exemptions to the plant law which had been added allowing permits by various means to be obtained. This bill would allow the Native Bromeliads to be sold by licensed Nurserymen who propagated them by seed or natural vegetative process, allowing them to be obtained by plant collectors and growers instead of being sold as decorator items. Possibly, future generations could view them in their natural habitat, festooning our cypress and live oak.

JANUARY/FEBRUARY 1978

25

Relevant Reading



by Mrs. Pierre D. Thompson (Shirley)
Chairman, Books, Slides and Library

BEGONIAS FOR BEGINNERS

Price \$5.95

Bookworm Publishing Company
P.O. Box 655, Ontario, Canada 91761

This inexpensive little jewel will answer the many questions you may have pertaining to one of my favorite plants—BEGONIAS. This much needed little journal fills you in on classifications, light requirements, temperature and humidity, potting mixes, potting and re-potting, watering, fertilizing, pruning, pinching, etc.

This book misses nothing and it fits right in your little hand to carry along with you and enjoy reading. Try it for your home library as well as your clubs.

Mrs. Pierre D. Thompson

MY GARDEN COMPANION

Price \$4.95

by Jamie Jobb

Charles Scribner's Sons 597 Fifth Ave., N.Y., N.Y. 10017

A complete guide for the beginner with a special emphasis on useful plants and intensive planting in the wayside, backyard, patio, rooftop and vacant lot. These 350 pages are packed with a gracious amount of helpful information for all gardeners. A very charming book that answers varied questions and which I'm sure you would find valuable. Your Juniors and Intermediates would find it quite easy to follow and remember due to its very clever illustrations and method of reasoning.

Chapters include such topics as "Getting to know six or seven great bugs," "Cycles of the Sun, Earth and Moon" and "The three main ingredients of balanced soils and how to provide them."

A small investment for such a wealth of knowledge.

S.T.

PLANTS-A-PLENTY

Price \$10.95

by Catharine Osgood Foster

Rodale Press, Inc. Organic Park, Emmaus, Pa. 18049

What an extensive book we are fortunate to have available today on propagating plants! Every type of plant is covered, including maidenhair ferns, privet hedges, zebra plants, lillies etc. Contains enough step-by-step photographs, line drawings and directions to guide even the novice through every type of propagation project. In part two (II) of this lovely book, nearly 700 specific plants are individually considered, with lists of optimum propagating seasons, soils, temperatures, moisture requirements, special needs, and best stocks to use. A great **general index** as well as one with common and botanical names is included.

This book is eminently readable as well as useful, and it will pay for itself many times over when your plants are expanding and having babies and you 'can help deliver' and relieve them. Share your plants—they grow better.

S.T.

EASTERN MEDITERRANEAN ODYSSEY

21 Days—\$1865.00.

April 1 - April 23, 1978

TOUR PERSONALLY ESCORTED BY VIRGINIA KNOPKE
FROM TAMPA TO TAMPA

(GROUP LIMITED TO 30 PARTICIPANTS OR LESS)

ATHENS - CRUISING PIPAEUS, MYCONOS, RHODES, HERAKLION,
SANTORINI
SALONIKA - SKOPJE - DUBROVNIK - SPLIT - RIJEKA - VENICE - FLORENCE -
ROME

INCLUDES

Trans-Atlantic via KLM Royal Dutch Airlines jet.
Three days Greek Island Cruise
First class hotels, twin-bedded rooms with private bath.
Continental breakfast and lunch or dinner.
Sound and Light performance in Athens.
Gala Farewell Dinner in Rome.
All entrance fees.
Porterage, service charges and taxes.
AND VERY SPECIAL PLACES AND EVENTS TO BE SELECTED
Per person, double occupancy. Limited single supplements available.
Price subject to change (but not anticipated).

Mrs. Virginia Knopke
Suite 103
Barnett Bank Building
Tampa, Florida 33602

Dear Virginia:

Please send me more information and an itinerary for the fabulous
EASTERN MEDITERRANEAN ODYSSEY, departing April 1, 1978.

Name: _____

Address: _____
City, State _____
and Zip: _____

Telephone: _____

For New Florida Gardeners

by Nathan F. Klein
Chairman, Horticulture Education

Living in Florida, you are in the fortunate position of enjoying the ability to grow cactus easily, and many varieties will do well outdoors in most parts of the state. You may have observed from visits to nurseries and garden shops that cactus are "IN" again in a big way (and in a small way, too). It is fun to own and observe these unusual plants and to watch their slow and different growth patterns.

My own interest began when I was quite young, continuing even through the many years spent living in apartments in large northern cities. Some of the cactus we had growing in our last apartment in New York were moved to Florida with us and are still thriving in our garden after almost seven years.

Over 6,000 species of cactus (Cactaceae) have been identified so far in this unusual family of succulents. A true cactus has areoles on the surface of the plant body (often cushion like) from which all growth takes place—branches; leaves, if any; flowers; wool; bristles; or spines. Cactus were originally native only in the Western Hemisphere with varieties native from Massachusetts to the far reaches of South America. The early explorers took cactus plants back to Europe where they were dispersed to areas in Africa, Asia and Australia, where due to climate and water condition vagaries, entirely different varieties eventually developed.

The cactus family is divided into the following tribes or genus: 1. Periska (Pereshicae)—an unusual variety that most resembles ordinary shrubs and is the least diversified of the three.

2. Opuntia (Opuntieae)—most common are those varieties with flat plate like pads that grow at unusual and sometimes weird angles and, strangely, are commonly called opuntias; and chollas (Choya), which have a cylinder like, ribless growth and usually have too many sharp spiney thorns or needles which are difficult to pull out of your fingers.

3. Cereus (Cereeeae)—a huge assortment of columnar varieties that run the gamut from tiny miniature thimble size plants to the huge organ cactus of Mexico and the giant Sahuara of Arizona, including the Echinocereus, Echino Cactus, Epiphyllum (Christmas and Orchid Cactus), Rhipsalis, and many other varieties.

Surprisingly, most all cactus bloom under the right conditions. The flowers are breathtakingly brilliant and beautiful—frequently much larger than the plants that bear them. The care of cactus is simple and easy—water during the growing season with infrequent applications of mild liquid fertilizer, and sparse occasional watering during dormant periods, which some never seem to have. Soil can be coarse sand with some peat moss or potting soil added. But, they can also thrive in gravel and some will grow quite well on the face of a large stone without any soil. Others are true Epiphytes (air plants).

Although cactus do not usually have insect problems, mealy bugs and scales sometimes develop. Heavy Malathion spray usually eradicates the mealy bugs, and will handle the scale if brushed vigorously before the spray is applied. All cactus are succulents because they have adopted themselves to hold and store water in either tuberous roots or in the plant itself.

Next time you buy plants, treat yourself to a few small, inexpensive cactus, (try to secure generic names if you can), and have fun watching them grow. Many plants look like cactus, such as varieties of yuccas, Joshua trees, agaves, mescal, ocutillos and euphorbias. Many euphorbias such as Euphorbia Lactea (commonly called Candleabra Cactus) look like cactus and grow under normal cactus growing treatment or neglect. Enjoy your new cactus and, while doing so, you can readily learn more about them from any of the available good books on cactus and succulents.

THE FLORIDA GARDENER

SEEK '78

by Mrs. Daniel F. Connell
Conference Chairman

DID YOU KNOW that the first life on this earth originated in water, one of our basic resources? Water has been neglected, abused, and given less intelligent thought and constructive attention than any other resource. WE SHOULD KNOW MORE ABOUT WATER.

DID YOU KNOW that in 1970 for each person in Florida about 1,800 gallons of water per day were used for domestic, industrial, rural, and irrigation activities? This demand is increasing, while sources are remaining relatively constant. The increase in population will make even greater demands on the water available. WE SHOULD KNOW MORE ABOUT WATER.

Through SEEK '78 (Save the Earth's Environment through Knowledge) FFGC is offering a unique opportunity for students entering grades 9-12 in the fall of '78 to study WATER and all its ramifications, Aug. 6-9 at Florida Technological University. Students must be members of registered Intermediate or High School Gardener Units or individuals sponsored by Garden Clubs or Garden Club members. The conference will be limited to 150 students and staff. Spaces will be reserved in the order in which they are received. To guarantee reserved space, send your scholarships (\$56 for a whole scholarship, \$28 for a half) SOON to:

Mrs. Harry C. Durand 625 Hartley Circle Deltona 32725

Tiger Creek - A Gift For Future Generations

As we start the new year, we bring you greetings from the residents of Tiger Creek. The wood ducks, ospreys, scrubjays, wood storks and all the many others join us in saying "Thank you and a Happy New Year" to the many supporters of our American Land Trust project, the preservation of Tiger Creek.

March 31, 1978 is the deadline for the American Land Trust Awards year. We urge all clubs, circles, and individuals to send in their contributions before that date, so that Florida Federation will again lead all federations in National Council and have an opportunity to again win the coveted Damrath award! Clubs intending to participate in this year's contest are reminded to send in their Book of Evidence by the deadline, March 31st. Application forms are available from this Chairman.

Membership in **The Acre Club** continues to increase! At the Spring Conference many clubs will be presented with Deeds of Gratitude for making possible the purchase of one acre of Tiger Creek, with contributions of \$260,00 or more.

The price of one acre of Tiger Creek is \$260.00. When this Bicentennial era project is completed, over 2,500 acres of land will be preserved as our "Gift for Future Generations."

We have been given an opportunity to participate in the greatest land conservation effort ever undertaken by the American people. Because of your unselfish giving and because you have developed an ethic that holds land dear and irreplaceable, a precious, unspoiled part of Florida will be saved to give joy and an appreciation of nature to our children and our children's children.

Join the many who are making the preservation of Tiger Creek a reality! Send in your contributions before March 31st. Contact your Club or District American Land Trust Chairman on how to contribute or send your check, made payable to The Nature Conservancy, to your State Chairman, Mrs. John G. Wood, Lake Otis, Winter Haven, Florida 33880. All contributions are tax deductible.

YOUNG PEOPLE'S PAGE

Hey all you Junior, Intermediate and High School Garden Club Leaders out there!—send us your ideas and suggestions for working with our young people. Please be good enough to share! Even if you don't have a student's club, and would like to send something to us, please do. Send all copy to Mrs. Roger Beattie, 8250 SW 115 Street, Miami, FL 33156.

Since January is the month of the Florida Arbor Day, we thought it appropriate to include ideas concerning trees.

KINDERGARTEN—3rd GRADE—Tree Activity

Take students to a large shade tree where there is grass. Have students lie down on their backs with you around the trunk of the tree. Everyone's feet should touch the trunk with heads away from the trunk.

1. Have students describe the shapes above them.
2. Tell students they are part of the tree and ask them how they feel about a bird building a nest in their branches.
3. A squirrel moves into the tree and the roots must react to this.
4. There is the sound of a chain saw. What are the roots feeling?
5. The tree has been cut down and its wood is to be used for: school, hospital, church, fireplace (heat). What are their feelings?

FOURTH-SIXTH GRADE—Touch and Find

Place several items that can be found on the school grounds (all from a tree—e.g. acorn, leaves, pine cones, berries, flowers, bare branches, etc.) in a large paper bag. Let each student reach into the bag without looking and touch the

items. Then instruct the students to go out on campus and find as many of the items as possible. Discuss why they had trouble with some of the items and why they found others more easily.

SEVENTH-NINTH GRADE—Leaf Similarities and Differences

Students collect 2 leaves from each of 2 different types of trees. They return to the classroom and individually list the following:

1. As many differences as they can find between the leaves of the two different trees.
2. As many similarities as they can find.
3. As many differences as they can find between the two leaves of the same tree.

HIGH SCHOOL—How old is a branch?

Have your students determine the age of tree branches on the school grounds. Starting at the tip of a branch, locate the terminal bud (the last bud on the tip of a twig or branch) Now move along the stem until the first bud scale scar is located. The scar completely encircles the branch and is the point where the last growing season's terminal bud was located. Usually, the distance between the bud scale scar and the terminal bud represents one year's growth. Then continue down the branch toward the tree's trunk to the next bud scale scar. The distance between the bud scale scars is one year's growth. How old is the branch? In what year did the branch grow the most? Do other branches on this tree show the same growth pattern? How often does this tree compare with other trees? What could have caused more growth in one year than in another year?

THE FLORIDA GARDENER

FLORIDA FEDERATION OF GARDEN CLUBS, INC.

WINTER PARK, FLORIDA CONSOLIDATED BALANCE SHEET MAY 31, 1977

ASSETS:

CASH		
General funds		\$ 22,986.66
Restricted funds		<u>137,344.52</u>
Total cash		160,331.18
ACCOUNTS RECEIVABLE		
Award donors and others	\$ 794.95	\$ 794.95
1978 Florida Flower Arrangement Calendar	<u>500.00</u>	
Total accounts receivable		1,294.95
INVENTORIES		
Cook books	657.20	
Charms and pins	211.19	
Ways and Means items	2,550.11	
FFGC 50 Year History	1,230.34	
Educational pamphlets	<u>60.96</u>	
Total inventories		4,709.80
INVESTMENTS (at cost)		
\$12M Borg Warner Acceptance Corp.,		
9 7/8%, 12-81	12,210.00	
15M Duke Power Co. "B", 8 1/8%, 03	14,775.00	
20M Northern States Power of Wisconsin,		
7 3/4%, 10-03	20,050.00	
20M Washington Gas Light Co.,		
9 3/8%, 99	20,242.00	
10M Gulf Power Corp., 8 3/8%	<u>9,972.80</u>	
Total investments		77,249.80
HEADQUARTERS PROPERTY		
Land, improvements, building and equipment	150,365.99	
Less accumulated depreciation	<u>74,795.31</u>	
Total Headquarters property		75,570.68
DEFERRED CHARGES		
Florida Flower Arrangement Calendar—		
1978 Expenditures	21,931.44	
Less Revenues	<u>20,067.68</u>	
	1,863.76	
1979 Flower Arrangement Calendar	290.16	
Prepaid and deferred expenses	<u>5,265.57</u>	
Total deferred charges		7,419.49
		<u>\$326,575.90</u>

These financial statements consisting of the consolidated balance sheet and general fund revenues and expenditures for the year ended May 31, 1977, are excerpts from the audit report of the same period prepared by Jack C. Nolan, Certified Public Accountant, and are subject to all notes to financial statements contained in the original report.

Mrs. Edward F. Smithers, Treasurer

JANUARY/FEBRUARY 1978

LIABILITIES AND FUND PRINCIPAL

ACCOUNTS PAYABLE

Youth manuals	\$	100.00	
National Council—membership dues		121.00	
Insurance		100.00	
Open pavilion		1,150.00	
Flower show schools		60.89	
Sales tax payable		55.92	
Total accounts payable			<u>1,587.81</u>

DEFERRED INCOME

Florida Gardener	\$	294.00	
Member dues		538.50	
Prepaid campships		25,425.57	
Award donors paid in advance		340.00	
Total deferred income			<u>26,598.07</u>

FUND PRINCIPAL

General Fund	28,994.97	
Wekiva Youth Camp Fund	7,876.69	
Scholarship Fund	5,909.02	
Blanche Capel Covington Leadership Fund	3,604.29	
Mary S. Compton Life Membership		
Endowment Fund	34,718.61	
Headquarters Endowment Fund	117,879.82	
Gateway Project Fund	1,248.61	
Youth Environmental Conference Fund	8,356.74	
Headquarters Contingency Fund	14,230.59	
Total fund principal		<u>222,819.34</u>

INVESTMENT IN HEADQUARTERS PROPERTY

75,570.68
\$326,575.90

REVENUES

		Membership dues:	
Regular membership		\$45,825.75	
Less: allocated to Florida Gardener		19,785.55	
		26,040.20	
High School Gardeners and affiliated organizations		177.60	
Projects and Activities:			
Revenues	\$35,079.89		
Expenditures	<u>26,397.39</u>	8,682.50	
Other revenues:			
Council of Garden Clubs	40.00		
Interest on savings and CD's	1,035.41		
Interest: Headquarters Endowment Fund	4,744.54		
Interest: Mary S. Compton Fund	488.63		
Contributions to headquarters	700.00		
Rent income	75.00		
Sales tax collected	1,677.91	8,761.49	
Total revenues		<u>43,661.79</u>	

EXPENDITURES

Membership dues	
National Council	7,736.50
Affil. org., high school & Jr. gardeners	85.00

Administrative expenses

Book of Information—printing	1,614.27	
District Chairman allotment	1,355.00	
Donations	434.77	
Gifts and courtesies	225.00	
Legal expense	130.78	
Library expense	24.94	
Mimeograph supplies	223.20	
Miscellaneous	301.38	
Payroll tax expense	582.40	
Postage—club service	212.48	
Postage and supplies—Federation	669.43	
P.O. Box rent and bulk mail permit	56.00	
Printing and stationery	162.14	
Privilege tax	5.00	
Professional fees—audit	1,450.00	
Salaries	9,953.63	
Sales tax paid	1,627.40	
Scholarships	5,700.00	
Telephone and telegraph	1,137.96	
Travel expenses:		
President	2,769.03	
Other officers	1,544.01	
Headquarters		
Building and equipment maintenance	629.64	
Grounds—maintenance	4,670.51	
Insurance	2,390.89	
Janitorial service	700.00	
Lease rental	10.00	
Miscellaneous	105.45	
Power and lights	1,197.01	
Sanitation service	42.00	
Sewer	33.00	
Telephone and telegraph	486.16	
Water	39.63	
Total expenditures	48,304.61	
Reimbursement to Wekiva Youth		
Camp for prior year's transfers	<u>2,446.12</u>	50,750.73
EXCESS EXPENDITURES OVER REVENUES		<u>\$ 7,088.94</u>

CLASSIFIED ADVERTISING

"GARDEN IN FLORIDA" quality paperback tells you what to do and what to plant every month. From bookstores and garden shops or by mail from author: Mary Noble, 3003 Riverside Ave. (FF), Jacksonville, Fla. 32205. \$3.95 plus 30c postage and 16c tax.

The CENTRAL FLORIDA AFRICAN VIOLET SOCIETY presents their 7th Annual Violet Show "Fantasy Characters and Violets" on March 4, 1978 from 1 to 5 PM and March 5, 1978 from 10 AM to 5 PM. Place:

Florida Gas Co., 1560 Orange Ave., Winter Park, Fl. Chairman: Miss Mary K. Johnson.

FOR THE CHILDREN IN YOUR LIFE ... "EDDIE ELF" writes letters to children each month. The letters are illustrated and a small surprise is enclosed. This gift is fun, educational and long lasting. Send the child's name (suggested ages 3-8), address, birthday and \$9.50 for a year's subscription to EDDIE ELF, Box 999, Palm Beach, Florida 33480

Postmaster:

Please mail form 3579 to
The Florida Gardener
9735 SW 138 St.
Miami, FL 33176

F.F.G.C. CONVENTION—DAYTONA 1978

The F.F.G.C. ANNUAL STATE CONVENTION, AT DAYTONA BEACH, MAY 16-18, 1978 ALL SORTS OF EXCITING THINGS ARE PLANNED FOR YOU, INCLUDING:

A SHIPWRECK PARTY!! FOR EARLY ARRIVALS—ON THE EVENING OF THE 16th

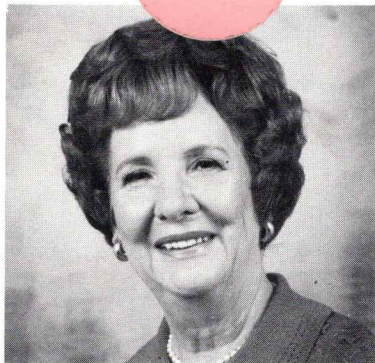
COME AS YOU ARE—WEAR JEANS, SHORTS, SNEAKERS—
LOTS OF FUN, AROUND THE POOL AT THE PLAZA HOTEL.

TENNIS COURTS ALSO AVAILABLE FOR YOU LANDLUBBERS!!

A PRIME OPPORTUNITY TO LEARN (FOR LEARNING IS A GROWING THING) AND MOST OF ALL TO HAVE FUN!!*!*

ROOMS AVAILABLE AT THE HOTEL WILL BE: \$24.00 single or double
4.00 each add'l person

MO... INFORMATION IN THE MARCH/APRIL
FLORIDA GARDENER



Mrs. Ira J. Varnedoe

Chairman of Convention, Hilda Varnedoe, is Past President of Garden Club of Jacksonville, Inc.; State Board Member for 2 years; Served on District IV Board 6 years; Accredited Flower Show Judge; Member governing Board Garden Club of Jacksonville, 20 years, serving many chairmanships; Past President Gloriosa Rothchildiana Garden Circle; Past member of Mayor's Historical and Cultural Commission, Past member Jacksonville Downtown Beautification Committee.



Mrs. Joseph W. Blake

Convention Co-chairman, Edna Blake, member Garden Club of Jacksonville, Inc. for 32 years; member governing board Garden Club of Jacksonville for 10 years; President Dahlia Circle, for two years; Executive Board member Florida Council of National Accredited Flower Show Judges, two years; District IV Director of Florida Council of Flower Show Judges for 2 years; Master Judge, 10 years.