

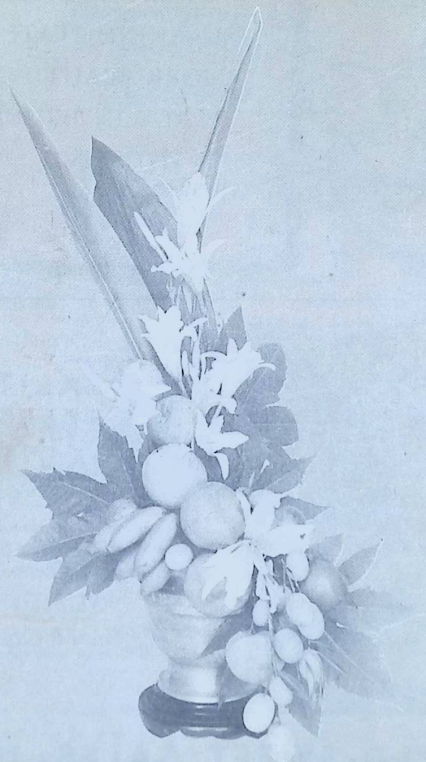
# The Florida GARDENER

*Comm. Reports*



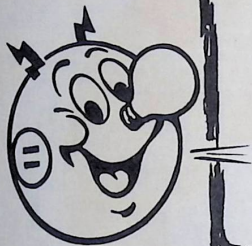
Official Publication of The Florida Federation of Garden Clubs, Inc.  
Member of The National Council of State Garden Clubs, Inc.

OCTOBER



1957 FALL EDITION

**FLORIDA  
POWER  
CORPORATION**



WE ARE GRATEFUL  
TO THE GARDEN CLUBS  
OF FLORIDA FOR THEIR  
UNTIRING EFFORTS  
IN MAKING THE  
SUNSHINE STATE A  
MORE BEAUTIFUL  
PLACE IN WHICH  
TO LIVE



**QUALITY  
CITRUS  
FRUIT**

•  
*Largest Fresh Fruit  
Shippers  
in Florida*

**SEALD-SWEET SALES, INC.**

Tampa 1, Florida

*The Name to Remember  
in all FLORIDA !*

**Sunniland**

BRAND

GARDEN  
SUPPLIES

PLANT FOOD  
FERTILIZERS  
CHEMICALS



Chase and Company offers a complete line of Garden Supply, Chemicals and Plant Foods under the name of Sunniland Brand.

Formulations are made in Florida for Florida climate and soil conditions.

Whether it is the tools that you choose, the advice in the use of our chemicals, or the specific

Plant Foods required, use Sunniland Products for the ultimate in results. It's the results that count. Make what you grow in Florida soil the most luxurious example of Sunniland's "grow-ability". Sunniland Brand is Chase and Company's finest assurance and expression of service to friendly customers through the years.

In all cases .. use Sunniland brand,

CHASE & COMPANY

SANFORD, FLORIDA

# FLORIDA FEDERATION OF GARDEN CLUBS, INC.

## OFFICERS

	<b>President</b> Mrs. Vernon L. Conner Box 183 Mount Dora, Florida	
First Vice-President .....	Box 2032, Pompano Beach	Mrs. C. R. Mayes, Jr.
Second Vice-President .....	2577 Forbes St., Jacksonville 4	Mrs. Arthur F. Coe
Third Vice-President .....	Fort King Road, Zephyrhills	Mrs. Melville Hall
Recording Secretary .....	505 E. 6th Avenue, Tallahassee	Mrs. Ernest Cason
Corresponding Secretary .....	Route 1, Box 73, Mount Dora	Mrs. W. H. Havens
Treasurer .....	1501 S. E. 12th St., Fort Lauderdale	Mrs. W. M. Allison

## DISTRICT DIRECTORS

District I:	Mrs. Robert A. Gottfried, Box 203, Shalimar	
District II:	Mrs. Eugene W. Bowles, Box 152, Marianna	
District III:	Mrs. Fred Carroll, Sr., 1215 Thomasville Road, Tallahassee	
District IV:	Mrs. Carroll Griffin, Ocean Air Court, Jacksonville Beach	
District V:	Mrs. G. T. Smith, Jr., Route 5, Box 202, Ocala	
District VI:	Mrs. Julius L. Gresham, 2021 N. Halifax Ave., Daytona Beach	
District VII:	Mrs. Julian E. Laughinghouse, 1018 Lake Davis Drive, Orlando	
District VIII:	Mrs. W. A. Hunt, 417 6th Avenue, Palmetto	
District IX:	Mrs. M. C. Kayton, 815 W. Main Street, Wauchula	
District X:	Mrs. Graham W. King, Box 503, Delray Beach	
District XI:	Mrs. Luther H. Atkinson, 20 N. E. 15th Avenue, Pompano Beach	

## STANDING COMMITTEE CHAIRMEN

Awards:	Mrs. Arthur F. Coe, 2577 Forbes St., Jacksonville 4	
Birds:	Mrs. W. W. Hendrickson, 5611 Weller Ave., Jacksonville 11	
Blanche Covington Nature Study Course:	Mrs. Paul Brown, Box 133, R. F. D. 2, Palatka	
Blue Star Highway:	Mrs. George J. Roark, 1780 Yates Ave., Pensacola	
Book Service:	Mrs. Anderson Burnett, 3311 First St., West, Bradenton	
Budget and Finance:	Mrs. Reuben H. Bowden, Box 83, Mandarin	
By-Laws Revision:	Mrs. A. R. Mullins, 1142 Sea Way Drive, Ft. Pierce	
Calendars:		
Chairman Content and Promotion:	Mrs. J. Lynwood Price, 3855 Ponce de Leon Ave., Jacksonville 7	
Treasurer:	Mrs. N. C. Rawls, 510 S. Peninsula Drive, Daytona Beach	
City Public Planting:	Mrs. Archie H. Comer, 3797 S. W. 13th Terrace, Miami 44	
Club Programs:	Mrs. C. R. Mayes, Jr., Box 2032, Pompano Beach	
Conservation:	Mrs. Robert L. Fairing, 901 S. W. 21st Ave., Kirkwood, Gainesville	
Counselor:	Mrs. John R. Parkinson, Box 666, Daytona Beach	
Custodian of Records:	Mrs. Harry M. Griffin, 309 N. Grandview Ave., Daytona Beach	
Fellowship in Horticulture and National Scholarships:	Mrs. James W. Day, 530 N. E. 7th Ave., Gainesville	
Florida Gardener Staff:		
Managing Editor:	Mrs. Melville Hall, Fort King Road, Zephyrhills	
Business Manager:	Mrs. D. M. Young, Box 51, Shalimar	
Circulation Manager:	Mrs. Andrew A. Gurke, 1555 Van Buren St., Hollywood	
Flower Show Judges:	Mrs. R. M. Dwyer, Box 1001, Lakeland	
Flower Show Schools:	Mrs. Truman Green, 42 Ladoga Ave., Davis Islands, Tampa	
Flower Shows:	Mrs. H. Jeff Davis, 121 N. Jackson St., Quincy	
Garden Centers:	Mrs. Don W. McKay, 4612 Bay to Bay Boulevard, Tampa	
Garden Club Library and Short Course:		
Garden Therapy:	Mrs. Mark L. Powell, 331 Easton Drive, Lakeland	
Historian:	Mrs. F. E. Mitchell, 274 Okaloosa Ave., Valparaiso	
Horticulture:	Mrs. C. C. Shorton, 4613 North A St., Tampa 9	
Junior Gardening:	Mrs. Clyde H. Pettijohn, 139 Ave. B, S. E., Winter Haven	
Landscape Design:	Mrs. C. E. Saunders, 430 S. Osceola, Orlando	
Legislation:	Mrs. G. O. Gjoerloff, Route 1, Box 807, Apopka	
Life Memberships State and National:	Mrs. J. B. Sullivan, Box 87, West Palm Beach	
Litterbug:	Mrs. Henry S. Penneck, Box A4, Jupiter	
Parks and Memorials:	Mrs. Sidney Davis, 1121 Wales Drive, Fort Myers	
Parliamentarian:	Mrs. W. A. Gibbs, 355 Massalina Drive, Panama City	
Publications:	Mrs. R. E. Stevens, 500 S. Ridgewood Ave., Daytona Beach	
Publicity:	Mrs. Slater Cox, Box 697, Eustis	
Radio and Television:	Mrs. W. T. Chennell, 1045 Lancaster Drive, Orlando	
Resolutions:	Mrs. J. L. Hart, 350 Blanca Ave., Tampa	
Roadside Development:	Mrs. Frank W. Hewlett, 2406 S. W. 23rd Terrace, Miami	
Visiting Gardens and Memorial Gardens:	Mrs. Sam I. Nix, 720 64th St. North, St. Petersburg	
National Gardener Circulation:	Mrs. Jack Dunlap, Box 367, Orange Park	
National Permanent Home Fund:		
Plant Distribution Project:		
State Convention:		
State Flower Show:		

## SPECIAL COMMITTEE CHAIRMEN

Mrs. C. R. Mayes, Jr., Box 2032, Pompano Beach	
Mrs. W. M. Allison, 1501 S. E. 12th St., Fort Lauderdale	
Mrs. Wm. C. Knox, 649 Isle of Palms, Fort Lauderdale	
Mrs. C. Verne Klintworth, 3308 Elizabeth Court, Tampa 9	
Mrs. Howard G. Gamble, Box 1184, Eustis	



THE  
**FLORIDA GARDENER**

**STAFF**

Managing Editor	Mrs. Melville Hall
	Fort King Road, Zephyrhills, Florida
Assistant Editor	Mrs. L. T. Nieland
	(In Charge of Club Newscast)
	416 N. E. Third Ave., Gainesville, Florida
Business Manager	Mrs. D. M. Young
	Box 51, Shalimar, Florida
Circulation Manager	Mrs. Andrew A. Gurke
	1555 Van Buren Street, Hollywood, Florida
	ASSOCIATE NEWSCAST EDITORS
District I	Mrs. William Powell
	220 Payne Road, Navy Point, Pensacola
District II	Miss Evelyn Justiss
	Marianna
District III	(to be announced)
District IV	Mrs. George Prichard
	P. O. Box 382, Atlantic Beach
District V	Mrs. J. T. McCullough
	923 East Palm Street, Ocala
District VI	Mrs. Earl Reigel
	227 S. Seneca Blvd., Daytona Beach
District VII	Mrs. Charles Calais
	Lake Calais, Goldenrod
District VIII	Mrs. P. J. Harvey
	5508 Suwanee Avenue, Tampa
District IX	Mrs. F. W. Priem
	Wauchula
District X	Mrs. A. F. Hopson
	Box 331, Belle Glade
District XI	Mrs. Paul A. Rindom
	4291 East 10th Court, Hialeah

**IN THIS ISSUE**

Calendar of Events to Come	6
President's Message	7
Schedule of FLORIDARAMA	8-17
Sweepstakes Trophies	18
Club Newscast	19-22
European Garden Tour	24
Posies, Plants and People	25
Flower Show Schools Calendar	27
Beginning:	
"Your Chairmen Speak"	28-33
Flower Shows Scheduled	34

**THE COVER**

ACCENT ON "FLORIDARAMA"—theme of the Sixth Florida State Flower Show to be held in Eustis, Dec. 6-8, 1957.

Ginger lily and castor bean foliage, day-lilies, oranges, tangerines, limes, kumquats and lady finger bananas were used in this colorful arrangement by Mrs. Douglas Igou, Eustis Garden Club, to point up Florida's citrus industry and its bounty of flora and fauna. The container is brass and the base is black. Photo by John R. Walter, Eustis.

**FROM BEHIND THE GARDEN GATE**

As we begin the assignment of editing The Florida Gardener, acknowledgment is made of the helpfulness and cooperation of the former editors.

It shall be our objective to portray the total program of the Florida Federation of Garden Clubs as it relates to the theme of this administration, "Facing Florida's Future."

We pledge assistance with the programs outlined herein and planned by the several chairmen to further Florida's continuing development along orderly lines. These include conservation of its natural resources and human life, safety and cleanliness on its highways, guidance for young citizens who will be leaders in the tomorrows to come, protection and enhancement of its horticultural heritage and scenic beauty to the end that Florida will be a better, more beautiful place in which to spend a vacation or a lifetime.

**About Advertisements**

Just as an enlightened, enthusiastic membership is the backbone of the State Federation, ADVERTISERS are the financial mainstays of THE FLORIDA GARDENER. We need their advertisements. In turn, they merit and need the wholehearted support and patronage of our members.

Many new advertisements appear in this issue. The staff's appreciation goes to Mrs. Vernon L. Conner, Mrs. C. R. Mayes, Jr., Mrs. Julius L. Gresham, Mrs. Julian E. Laughinghouse, Mrs. Sam I. Nix, Mrs. Sidney Davis, Mrs. Eugene J. Gallagher, Mrs. Lester H. Simon and Mrs. P. J. Harvey for their assistance in securing them.

Advertisers who favored us with renewals continue to merit our gratitude.

*Alice Fryer Hall*

**FLORIDA FEDERATION OF GARDEN CLUBS**

Clubs and Circles	976
Total Membership	27,472

Figures as of August 15, 1957

Published QUARTERLY by the Florida Federation of Garden Clubs, Inc. Subscription 25 cents annually to members of the federation, 50 cents annually to others. Second-class mail privileges authorized at Miami, Florida.

Advertising and Business Office, Box 51,  
Shalimar, Florida  
Mrs. Melville Hall, Managing Editor, Fort King  
Road, Zephyrhills, Florida  
Mrs. Andrew A. Gurke, Circulation Manager,  
1555 Van Buren St., Hollywood, Florida

Office of Publication, Publishers Press,  
355 N. E. 59th St., Miami, Florida

Unclaimed COMPLETE COPIES to be returned  
to The Florida Gardener, 1555 Van Buren St.,  
Hollywood, Florida

**RETURN POSTAGE GUARANTEED**



**DISTRICT VI PRESIDENTS' CONFERENCE** in Orange City. Left to right: Mrs. C. R. Mayes, Jr., First Vice President of the Florida Federation of Garden Clubs, Inc., Mrs. Vernon L. Conner, State President, Mrs. Julius L. Gresham, Daytona Beach, District Director, standing, Mrs. T. B. Broome, President of DeBary Garden Club, and Mrs. A. H. Bendwig, President of the Orange City Garden Club.

Mrs. Roger Murray, right, President of Palmetto Garden Club, greets State President Mrs. Vernon L. Conner, District Director Mrs. W. A. Hunt, Palmetto, and FFGC 1st Vice President Mrs. C. R. Mayes, Jr., (pictured left to right) at a coffee preceding DISTRICT VIII's ANNUAL PRESIDENTS' CONFERENCE, held in Palmetto.

## CALENDAR OF EVENTS TO COME

October 30, 1957	Flower Show Schools Reading Examination
November 12-13	Florida Federation of Garden Clubs, Inc., Board Meeting, Delray Beach.
December 6-7-8	<b>STATE FLOWER SHOW</b> , National Guard Armory, Eustis.
January 12-18, 1958	Plant Florida Week.
January 17	Arbor Day.
January 29-31	Second Tropical Short Course, University of Miami, Miami.
February 4-5	Florida Federation of Garden Clubs, Inc., Board Meeting, Lake Wales.
February 12-14	South Atlantic Regional Meeting, Charleston, S. C.
April 16	Florida Council of Flower Show Judges Annual Meeting, St. Petersburg.
April 17-19	Thirty-second Annual Florida Federation of Garden Clubs Convention, Tampa.
April 27-May 3	Blanche Covington Nature Study Course, O'Leno State Park.
April 30	Flower Show Schools Reading Examination.
May 18-24	National Council of State Garden Clubs Convention, Seattle, Washington.
June 24-26	Garden Club Short Course, University of Florida, Gainesville.
July 7-25	Third Conservation Workshop For Teachers, Florida State University, Tallahassee.

## ANNUAL DISTRICT EVENTS

### 1957 FALL MEETINGS

### 1958 PRESIDENTS' CONFERENCES

District I	October 22	Fort Walton Beach	April 29	Pensacola
District II	October 23	Lynn Haven	April 30	Graceville
District III	October 24	Madison	May 1	Tallahassee
District IV	October 25	Lake City	May 5	Green Cove Springs
District V	November 4	Ocala	May 2	Dunellon
District VI	November 6	Cocoa	May 6	DeLeon Springs
District VII	November 5	Sanford	May 7	Kissimmee
District VIII	October 31	St. Petersburg	May 8	Davis Islands, Tampa
District IX	October 30	Sebring	May 9	Haines City
District X	October 28	Fort Pierce	May 13	Lake Worth
District XI	October 29	Coral Gables	May 12	Homestead

*President's Message*

Dear Garden Club Members:

The schedule for the State Flower Show is featured in this issue of the Florida GARDENER. It has been planned to include classes with wide appeal for all members. Please study the schedule carefully and register early. FLORIDARAMA has received a happy, enthusiastic response from gardeners throughout Florida. A glass and aluminum greenhouse will be given to some fortunate person who has purchased a ticket and the owner does not have to be present to win. For the first time, valuable silver Traveling Trophies are offered as Sweepstakes Awards to challenge the horticulturist and/or flower arranger. Come to Eustis Dec. 6-8, to see the beautiful show and to share your mutual interest with other gardeners.

We have interested, enthusiastic, well-qualified State Chairmen. They have been working hard during the summer months; have excellent programs planned and are willing and anxious to be of service to you. Call upon them.

The District Directors had especially fine Presidents' Conferences this spring and their Fall District Meetings will be outstanding events. Every Club member is welcome to attend the District Meeting. You will meet the State Officers and District leaders, receive information and inspiration, and have a better understanding of the objectives and activities of the Garden Club.

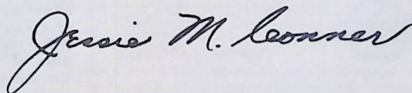
This is the first issue of the GARDENER produced by our talented and competent new editor, Mrs. Melville Hall. Mrs. D. M. Young continues as the capable Business Manager and Mrs. Andrew A. Gurke, as Circulation Manager, will continue the arduous task of keeping up with our more than 27,000 members. To keep within our budget, the Gardener will come to you quarterly for the next two years. **Four extra pages** will be added to each issue and will bring you timely information as the unified program of the State Federation progresses in Facing Florida's Future.

The Florida Federation of Garden Clubs is proud of its member Clubs. It is wonderful to belong to an organization which has contributed so much to the beautification of our state for over three decades. In order that you will have tangible evidence of affiliation with this great movement, membership Certificates will be issued to each member Club during the fall. Treasure this document for the message that it gives—you belong to the Florida Federation and the Florida Federation belongs to you.

Read the exciting news in this issue about the European Garden Tour the Federation will sponsor. A merit rating scale of points has been established covering all phases of our activities and will serve as a yardstick for evaluating the excellence of Club accomplishments. There is an extra dividend of a FREE tour to Europe awaiting some Garden Club member in 1959, if the Federation has a minimum of twenty bookings in both 1958 and 1959. This bonus will be given to a member of the Club achieving the highest merit rating. Each Club and Circle has received full details and each issue of the Gardener will carry interesting highlights.

With our active and enthusiastic members, producing so many worthwhile accomplishments for the betterment of our state, we shall continue to go forward and make Florida a better and more beautiful place in which to live.

Cordially yours,



## DIETEL'S TROPICAL NURSERY

2540 S. W. 18th STREET

(Off Riverland Road)

FORT LAUDERDALE

*"The Showplace of South Florida . . .  
Well Worth a Visit If Only to Browse  
. . . Bring a Friend and a Camera."*

MAKE YOUR YEAR ROUND GARDENING SELECTIONS FROM ONE OF THE LARGEST STOCKS OF FINE PLANTS IN FLORIDA — THOUSANDS and THOUSANDS TO CHOOSE FROM — A COMPLETE DEPARTMENT FOR EACH PLANT AND PLANTING NEED — MORE THAN SEVEN ACRES OF INDOOR AND OUTDOOR PLANT MATERIAL.

Annual Bedding Plants

Fruit Trees

Blooming and Foliage House Plants

Cacti and Succulents

Blooming Shrubs

Ground Covers

Shade Trees

Palms

Flowering Trees

Hedge Plants

Seashore Plants

Flowering Vines

Garden Supplies

### SOME EXTRA SERVICES

World Wide Shipping, Boarding of Plants, Garden Problem Consulting Service, Garden Question & Answer Radio Program Weekly on WFTL Radio—1400—6:15 Every Friday, Free Map of Ft. Lauderdale, Providing Lecturers to Garden Clubs, Open Til Dark and Sundays. Free Delivery in Greater Ft. Lauderdale, Arranging Delivery to Other So. Florida Cities, Participation in Garden Club Activities, Guided Tours For Club Groups, Providing Meeting Facilities For Garden Clubs, Complete Landscaping Design & Installation, Interior Design & Planting.



DIETEL'S

TROPICAL NURSERY



### MRS. HOWARD G. GAMBLE

*State Flower Show Chairman, Eustis*  
Mrs. Howard G. Gamble, chairman of the Sixth Florida State Flower Show, is a native Floridian and the daughter of Mrs. William M. Igou and the late Senator Igou of Eustis.

She has served as Chairman of Camellia Circle, as President of both the Eustis Garden Club and the Lake County Council, and was Chairman of the Rose Rosette Award-winning Lake County Flower Show.

Mrs. Gamble says "The idea of a State Flower Show was always with us, I think, but as something to be realized in the far, far future.

"In the Spring of 1956, we began to foresee that our own Jessie Conner would probably become President of the State Federation in 1957. We are proud of her! How best could we show our pride?

"Surely our Dream Day was no longer a distant tomorrow. Our D-Day had come. We would invite the State Flower Show in 1957. Our Council so decided. The invitation was given and accepted. Plans were in the making. From this our theme "Floridarama" evolved.

"To us FLORIDARAMA means the beauty of Florida as we who live here know and feel it. It means the beauty of Florida as seen by those who view it for the first time. It means the richness of its history and heritage and the greatness of its promise for a good life!"



## FLORIDARAMA

*Tropical splendor the seeker found  
Sculptured in beauty, challenged, unbound.  
Enhanced by the years, now priceless the find  
Honors in memory the trials of time.  
Radiant the sunshine, deep shadows drift by;  
Bewitching the moonlight, silhouettes on the sky.  
Balmy the breeze, palms gently in sway,  
Where summer steals winter, zest captures each day.*

*Springs clear as crystal, deep mysteries o'erflow  
Myriads of lakes, reflections to show.  
Majestic the hills, lofty heights awe man;  
Enchanting the shores, rare treasures in sand.  
Prairies and glades echo softly the keys  
Timber'd by forests of moss-laden trees.  
Saucy prim birds in rhapsodies call  
The still-of-the-wild, note warning to all.*

*Dawn quickens tender, the halo of day;  
Dew-sparkled wild flowers jewel the way.  
Fields yield to harvest, full-fruited and flowered;  
Orange blossoms fragrant, groves laden and bowed.  
Stately tall pines draw slowly to cup,  
And out on the ranch the strayed round up.  
Country and gardens, still spared the great might  
Of fabulous cities, spelled magic by night.*

*Rockets and planes—Conquerors of space  
Ships plying harbors in rhythm and grace.  
Opportunity beckons, to venture and flourish  
Mid cultures instilled; minds eager to nourish.  
Holidays—festivals, pleasures impart;  
Dusk glorifies all; home secrets the heart.  
Cordial the welcome, doors ever ajar  
To friends or the stranger, near or afar.*

*Wee ones so lively, elfin at play  
Carefree and tanning, youth joyous and gay.  
Ardent the young, ambitious to wrest  
Dignity, harmony, life at its best.  
Threshold of greatness—go forward we must  
Fearless and faithful—in God is our trust.  
Facing Florida's Future, united we stand  
With Art and Nature hand in hand.*

—Kathryn Stephens Chester

Copyright 1957

James Arnold Zachman, Greenhouse Manufacturing Company, Apopka, is donor of the 8 by 10 glass and aluminum greenhouse to be given as the grand prize at the Sixth Florida Flower Show in Eustis, Dec. 6-8, 1957.

The 1958 Florida Flower Arrangement has gone international!

Shipments to Mrs. Kikou Meili for the Botanical Garden Society, Geneva, Switzerland, and Mrs. Gunther Lomnitz for the Garden Club of Cuba have been reported by:

Mrs. N. C. Rawls, Treasurer  
510 Peninsula Drive, Daytona Beach

# FLORIDARAMA

## THE SIXTH FLORIDA STATE FLOWER SHOW

presented by

The Florida Federation of Garden Clubs, Inc.

and the

Lake County Council of Federated Garden Clubs, Inc.

National Guard Armory

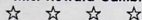
Eustis, Florida

DECEMBER 6, 7, 8, 1957

Admission \$1.00 — Children 50c

Hours: 4 to 10 p.m., Dec. 6; 10 a.m. to 10 p.m., Dec. 7; 1 to 10 p.m., Dec. 8

General Chairman: Mrs. Howard Gamble, Box 1184, Eustis



Official Schedule for Sixth Florida State Flower Show

### GENERAL RULES

1. All entries must be in place by 12 o'clock on Friday, December 6.
2. Each exhibitor is limited to one entry in each class.
3. Classification Committee will enforce exhibition rules and decide all questions pertaining to entries.
4. Awards will be given or withheld at the judges' discretion. Decision of the judges will be final.
5. No material on Florida Conservation list permitted except in Educational Exhibits; Arizona spoon cactus not permitted.
6. All property should be marked with name of exhibitor. Care will be exercised to prevent accident or damage of any kind but the Florida Federation of Garden Clubs, Inc., or the Lake County Council of Federated Garden Clubs, Inc., will not assume liability for damage to property or person.
7. Entries may not be removed before 10:00 p.m. Sunday, December 8.
8. Entries must be removed before noon, Monday, December 9.

### AWARDS

1. Ribbon designations are as follows: Blue for first, Red for second, Yellow for third, White for Honorable Mention.
2. Only one Blue, one Red and one Yellow ribbon may be awarded in each class.
3. A Tricolor may be awarded to the highest scoring blue ribbon winner from Classes 1, 14, 17, 20, 23, 24 and 30. (Blue-red-yellow combined). An Award of Distinction may be awarded to the highest scoring blue ribbon winner from Classes 2, 3, 4, 5, 6, 7, 8, 9, 10, 11, 12, 13, 15, 16, 18, 19, 21, 22, 25, 26, 27, 28, 29, 31 and 32. (Brown Ribbon with gold lettering.) A Gold Seal may be awarded from the Blue Ribbon winners in Class 33, also Class 34; and from Classes 35 and 36.  
Awards of Appreciation will be given in Classes 37 and 38. (Orchid Ribbon)  
A Special Award will be given to exhibitors in Class 39 (Green Ribbon)  
An Award of Merit may be extended to the horticultural exhibit judged as the finest in the horticulture section. (Orange Ribbon)  
A Gold Seal may be given in the Orchid Section.
4. Sweepstakes Awards will be given the exhibitors winning the most Blue Ribbons—one in Horticulture and one in Arrangements. (Green and White Rosette)
5. A Gold Rosette may be awarded for meritorious Educational and Commercial Exhibits, Schedule, Staging and Special Decorations.
6. A Traveling Trophy will be presented to the Sweepstakes winner in the Arrangement and the Horticulture Divisions.

### ARRANGEMENT DIVISION RULES

1. Arrangement classes are open **only** to members of the Florida Federation of Garden Clubs, Inc.
2. Entries must be registered in advance, by mail, with **Entry Chairman Mrs. William M. Haywood, Jr., Box 804, Tavares, Florida.** Entries will be accepted beginning October 1 with no entry accepted after November 15. Entries are limited and assignments will be in order of date of receipt. Please give a second and third preference.

3. After entry has been accepted, exhibitor must provide a substitute if unable to exhibit.
4. Plant material for arrangements may be obtained from any source, but arrangement must be exhibitor's own work.
5. All material in arrangements must be listed on entry card and placed by exhibit.
6. Titles used for classes are intended to be inspirational and interpreted as the exhibitor feels them.
7. Exhibitor must keep material fresh; those living beyond a 50-mile radius may call upon the maintenance chairman for assistance.
8. Background for all niches will be gray-green. Exhibitor may substitute a background where classes permit.
9. A "free-standing" arrangement is one finished on all sides.
10. "Design" in this schedule denotes a composition. See The Handbook for Flower Shows for other definitions.
11. FOUR arrangements in each class unless otherwise stated.  
Dimensions: Height 32" — Width 24" — Depth 24" — Height from the floor 39".

**Consultants**

Mrs. Burke Chester, Tavares; Mrs. Carl S. Graves, Mount Dora; and Mrs. William M. Haywood, Jr., Tavares.

Classes 37, 38 and 39 will not be judged.

In all other classes, except 33 and 34, the following Scale of Points shall apply. (Five percent of the score for Distinction shall be applied to "Interpretation of Class.")

**SCALE OF POINTS**

Design .....	30
Color .....	25
Distinction .....	25
Relationship .....	20
	100

**SCALE OF POINTS**

**CLASS 33—MINIATURES**

Scale .....	40
Design .....	30
Color Harmony .....	20
Condition .....	10
	100

**CLASS 34—CORSAGES**

Design .....	30
Originality and distinction .....	20
Color .....	25
Suitability to occasion .....	10
Combination of materials .....	10
Technique .....	5
	100

**JUDGING WILL BE ACCORDING TO RULES OF THE OLD HANDBOOK**

I

**ARRANGEMENT DIVISION**

- CLASS 1.** *Tropical splendor the seeker found*  
An arrangement using tropical plant material.
- CLASS 2.** *Sculptured in beauty, challenged, unbound.*  
A composition dramatizing nature's sculpture.  
(Weathered wood, shells, rocks, etc.)
- CLASS 3.** *Enhanced by the years, now priceless the find*  
A design in an interesting old container  
(Antique or reproduction)
- CLASS 4.** *Honors in memory the trials of time.*  
A still life interpreting an incident in Florida's history.  
(Must be titled)
- CLASS 5.** *Radiant the sunshine, deep shadows drift by;*  
Companion arrangements, one large and one small, as nearly identical in design as possible. The smaller, in front, in bright colors; the larger, recessed as the shadow, in darker colors.
- CLASS 6.** *Bewitching the moonlight, silhouettes on the sky.*  
A design in black and white dramatizing the silhouette.  
(Black material may be charred or painted)
- CLASS 7.** *Balmy the breeze, palms gently in sway,*  
A design including palm fronds  
(Sago and coontie permitted)
- CLASS 8.** *Where summer steals winter, zest captures each day.*  
An interpretive design  
(Painted or treated material permitted)

- CLASS 9. *Springs clear as crystal, deep mysteries o'erflow*  
A design in a clear container, including underwater pattern, interpreting one of Florida's popular Springs. Must be titled.
- CLASS 10. *Myriads of lakes, reflections to show.*  
A design in a low container. Some water visible.
- CLASS 11. *Majestic the hills, lofty heights awe man;*  
A vertical design suggesting one of Florida's famous towers. Must be titled.
- CLASS 12. *Enchanting the shores, rare treasures in sand.*  
A composition of fresh and/or dried plant material, including an article, or articles, from the sea.
- CLASS 13. *Prairies and glades echo softly the keys*  
A naturalistic composition of dried and fresh plant material.
- CLASS 14. *Timber'd by forests of moss-laden trees.*  
A foliage arrangement.
- CLASS 15. *Saucy prim birds in rhapsodies call*  
A design, stressing line, inspired by the colors of a bird seen in Florida.
- CLASS 16. *The still-of-the-wild, note warning to all.*  
A composition depicting the animal life of the forest.
- CLASS 17. *Dawn quickens tender, the halo of day;*  
A design, inspired by the colors of dawn, dramatizing the values of one hue. No accessories except background.
- CLASS 18. *Dew-sparkled wildflowers jewel the way.*  
A design using wildflowers or "escapes."
- CLASS 19. *Fields yield to harvest, full-fruited and flowered;*  
A composition, in a compote, using flowering material in combination with fruits and/or vegetables. Foliage and artificial grapes permitted.
- CLASS 20. *Orange blossoms fragrant, groves laden and bowed.*  
An arrangement of fruits and/or vegetables, dramatizing citrus. Foliage and flowers permitted.
- CLASS 21. *Stately tall pines draw slowly to cup,*  
A design featuring pine.
- CLASS 22. *And out on the ranch the strayed round up.*  
A design inspired by the geometric pattern of a cattle brand. Brand name to accompany entry.
- CLASS 23. *Country and gardens, still spared the great might*  
A simple arrangement from roadside and garden.
- CLASS 24. *Of fabulous cities, spelled magic by night.*  
A line-mass arrangement.
- CLASS 25. *Rockets and planes—Conquerors of space;*  
An interpretive design. Must be titled.
- CLASS 26. *Ships plying harbors in rhythm and grace.*  
A design stressing rhythm.
- CLASS 27. *Opportunity beckons, to venture and flourish*  
A design inspired by one of Florida's 7,500 products. Must be titled.
- CLASS 28. *Mid cultures instilled, minds eager to nourish.*  
A design interpreting a title from one of the fine arts. Title to accompany entry.
- CLASS 29. *Holidays—festivals, pleasures impart,*  
A design suitable for holiday or inspired by a Florida festival. (May include artificial and/or treated material) Must be titled.
- CLASS 30. *Dusk glorifies all; home secrets the heart.*  
A design, inspired by the sunset, in colors related by one pigment primary. No accessories except background.
- CLASS 31. *Cordial the welcome, doors ever ajar*  
A Christmas design suitable for a hall table.  
(Decorative ornaments, painted and/or treated material permitted)
- CLASS 32. *To friends or the stranger, near or afar*  
A design in the manner of a locale outside Florida. May reflect a foreign or domestic influence.

- CLASS 33. *Wee-ones so lively, elfin at play*  
 Miniatures—not to exceed 3 inches. (5 entries each class)  
 A. Wee-ones—An arrangement of fresh plant material.  
 B. Lively—A line arrangement of fresh plant material.  
 C. Elfin—A composition of dried plant material.  
 D. Play—A composition of dried and fresh material.
- CLASS 34. *Carefree and tanning, youth joyous and gay.*  
 Corsages (5 entries each class)  
 A. Carefree . . . Informal  
 B. Tanning . . . Dried  
 C. Joyous . . . Christmas  
 D. Gay . . . New Year's Eve
- CLASS 35. *Ardent the young, ambitious to wrest*  
 Breakfast table set for two. Exhibitor must furnish dishes, cloth or mats.  
 Table size: Approximately 27" by 28".
- CLASS 36. *Dignity, harmony, life at its best.*  
 Formal Christmas table set for four. Exhibitor must furnish cloth, china, crystal and accessories. (Standard size oblong dining table.)
- CLASS 37. *Threshold of greatness—go forward we must.*  
 Arrangements of tomorrow; anything goes, suggesting new ideas in design, accessory materials, or containers, etc. Free-standing design, not to exceed 36 inches in height, staged on a pedestal. Pedestals furnished; diameter of top, 21 inches, height 33 inches. (Five entries limited to Florida accredited Flower Show School Instructors.)
- CLASS 38. *Fearless and faithful, in God is our trust.*  
 A free-standing arrangement of white flowers, foliage permitted, to be staged on a pedestal and not to exceed 36 inches in height. Pedestals furnished; diameter of top 21 inches, height 33". Five entries limited to members of the Florida Council of Flower Show Judges.)
- CLASS 39. *Facing Florida's Future—united we stand,  
 With Art and Nature hand in hand.*  
 Invitation compositions, representing each of the eleven districts of the Florida Federation of Garden Clubs, and dramatizing the colors of the spectrum. Height 48" — width 32" — depth 24" and 52" from the floor.

## HORTICULTURE DIVISION

### General Rules

1. Exhibits are open to members of the Florida Federation of Garden Clubs.
2. Potted plants must have been in exhibitor's possession at least three months.
3. Specimens must be grown by exhibitor.
4. Specimens in all classes must be labeled with correct name. A Classification Committee will be on hand.
5. Uniform containers will be provided for all cut specimens.
6. All Potted Plants must be registered by mail with the **Horticulture Entries Chairman, Mrs. R. D. Flippo, Box 595, Eustis, Florida**, BEFORE November 15.
7. All Lake County members must, and others may, enter Potted Plants on December 5, between 1 and 5 p.m. Other specimens also may be entered.
8. All entries will be judged against Cultural Perfection.
9. Judges may subdivide classes in horticulture.

Note: The Horticulture Committee of this show has tried to simplify the schedule. No plants are listed specifically since it is the hope of the Committee that all varieties of well grown plants will be entered.

Consultants: Mrs. W. G. Wells, Tavares; Mrs. J. G. Ray, Jr., Mount Dora; and Mrs. R. D. Flippo, Eustis.

## II

### HORTICULTURE DIVISION

JUDGING WILL BE ACCORDING TO RULES OF THE OLD HANDBOOK

Section 1. Growing Orchids

#### CUT SPECIMENS

Section 2. Cut Orchids

Section 3. Bulbs, Corms, Rhizomes and Tubers (one stem, stalk or spike—sub-classed by variety or color)

Section 4. Annuals and Perennials—one stem unless otherwise stated.

Sweet Pea . . . 6 blooms                      Violets . . . 12 blooms

Nasturtiums . . . 6 blooms                      Pansies . . . 3 blooms

Section 5. Roses—one stem or spray. Subclassed by variety or color.

- Section 6. Hibiscus—one bloom. Subclassed by variety or color.  
 Section 7. Camellias—one bloom. Subclassed by variety or color.  
 Section 8. A. Flowering Shrub, Tree or Vine. One branch, not over 30". Sub-  
 classed by variety or color.  
 B. Berry-bearing Shrub, Tree or Vine. One branch, not over 30".  
 Subclassed by variety or color.  
 Section 9. Foliage—one stem or branch, not over 30" or 3 leaves from stemless  
 foliage plants such as aspidistra.  
 Section 10. A. Home Grown Fruit  
 B. Home Grown Vegetables  
 Classes A and B: A collection of one or more varieties artistically  
 displayed. Minimum 3 of a variety.

#### GROWING PLANTS

- (a) Where a plant naturally grows in multiple form, i.e., more than  
 one shoot or plant from the main root, a separate division of the  
 class may be formed; this will be listed as Subdivision M of the  
 class to which it belongs.  
 (b) In any class of foliage plants entries of 3-5 plants in one variety  
 may be made as a collection (connected into one unit by ribbon  
 or cord). Such a group will be listed as Subdivision X of the  
 class to which it belongs.
- Section 11. Flowering Plants (must be in bloom)  
 Section 12. Foliage Plants  
 Section 13. A. Plant Arrangement  
 B. Dish Gardens  
 C. Terrariums  
 D. Herbs  
 Classes A, B, C, D must be growing plants in containers, not to  
 exceed 18" wide and 24" long. Minimum 3 plants.  
 Section 14. Cacti and Succulents  
 Section 15. Novelties—unusual plants in unusual containers.

#### III

#### EDUCATIONAL DIVISION

Here's the Secret of a  
 Green Thumb in Florida!



Feed Your Lawn and  
 Garden Gro-Tone Super Plant Food and Enjoy  
 the Amazing Results Gro-Tone Extras Bring



A Quality Product of Wilson & Toomer

*Special Formula for Florida Soil*

IV  
**JUNIOR DIVISION**  
Theme: *Floridaette*  
**General Rules**

1. Exhibits are open to all Junior Garden Club members of Florida. First through seventh grades.
2. All potted Plants and Specimens must be in exhibitor's possession at least three months.
3. All Horticulture entries will be judged against cultural perfection.
4. The same Horticulture rules will apply to the Junior Division as to the regular horticulture division of the show.
5. The same rules will apply to the Junior Artistic classes as in the regular schedule. Each entry card must have exhibitor's name, grade, school and town.
6. Classes will be judged as in the Senior Division, and a Junior Achievement Award may be given to the outstanding Artistic or Educational Exhibit. (Red-white-blue combined)
7. Entries may be registered in advance, by mail, with the **Junior Chairman, Mrs. Alex Laurie, Box 625, Eustis, Florida**. Entries will be accepted beginning October 1 with no entry accepted after November 15. Some classes are limited and assignment will be in order of date of receipt.

Note: It is the hope of the Flower Show Committee that every Junior Chairman will make entries for her club. Please write Mrs. Alex Laurie for any further information.

### *Floridaette*

*Growing in the sunshine  
Pretty, sweet and grand;  
Young ones find adventure  
In Nature's wonderland.*

*Birds and bees and butterflies  
Spy each flowered branch,  
Colored leaves and spreading trees;  
Dry bits sway and dance.*

*Rocks and shells and weathered wood;  
Bouquets for Mommy dear,  
Beauties of the wildlings,  
Tempting treats to cheer.*

*Holidays are happy times—  
But Santa comes so slow  
To tiptoe in the candlelight  
And kiss 'neath mistletoe  
The dressed-up doll,  
At Christmas Tea,  
And hang bright treasures  
On the tree.*

*Gay reminders pictures make,  
Scrapbooks keep for memories' sake  
Of words and deeds, no finer art  
Than sow a seed and reap a heart.*

—Kathryn Stephens Chester

## **GARDEN CLUBS**

are INVITED to a  
**CONDUCTED TOUR**

of Florida's Largest  
**West Coast Nursery**

Let us know approximately a  
month in advance and we will  
roll out the red carpet.

**REFRESHMENTS**

**SOUVENIRS**



On U.S. 41

**OSPREY, FLORIDA**

**8 Miles South of Sarasota**

## Floridaette

- CLASS 1. *Growing in the sunshine*  
 Horticulture—Potted Plants  
 A. Foliage Plants  
 B. Flowering Plants
- CLASS 2. *Pretty, sweet and grand;*  
 Horticulture  
 C. Cut Flowers  
 D. Fruits and Vegetables
- CLASS 3. *Young ones find adventure*  
 Miniature Gardens depicting a scene. May be from a nursery rhyme, fairy tale, heroic adventure, etc. All plants must be growing and entry titled.
- | Scale of Points for Miniature Gardens     |     |
|---|-----|
| Originality of design .....               | 40  |
| Correctness of scale and proportion ..... | 20  |
| Quality and type of material .....        | 20  |
| Color harmony .....                       | 10  |
| Perfection of detail .....                | 10  |
|   | 100 |
- CLASS 4. *In Nature's wonderland.*  
 Terrariums. All plants must be growing in containers not exceeding 15".
- | Scale of Points for Terrariums           |     |
|--|-----|
| Design and arrangement of planting ..... | 35  |
| Suitability of material .....            | 35  |
| Quality and condition .....              | 30  |
|  | 100 |
- CLASS 5. *Birds and bees and butterflies*
- A. Birds—Feeding Stations
- | Scale of Points for Feeding Stations                |     |
|---|-----|
| Design, including scale .....                       | 40  |
| Suitability (for object) .....                      | 20  |
| Features, protective:<br>(cats and squirrels) ..... | 20  |
| (wind shelter, food salvage) .....                  | 20  |
|   | 100 |
- B. Bees—Miniatures. Any type container, 3" overall.
- | Scale of Points for Miniatures |     |
|--------------------------------|-----|
| Scale .....                    | 40  |
| Design .....                   | 30  |
| Color Harmony .....            | 20  |
| Condition .....                | 10  |
|                                | 100 |
- C. Butterflies  
 A small vertical arrangement in colors of a butterfly. To be staged in a cigar box niche supplied by the committee. Size: Height 7", Width 5", Depth 2½". (20 entries)
- | Scale of Points for all Arrangement Classes |     |
|---|-----|
| Design .....                                | 30  |
| Originality and Suitability .....           | 25  |
| Color Combination .....                     | 25  |
| Relation to Container .....                 | 10  |
| Condition .....                             | 10  |
|   | 100 |
- CLASS 6. *Spy each flowered branch.*  
 A line arrangement, not over 18" tall.
- CLASS 7. *Colored leaves and spreading trees.*  
 A foliage arrangement, not over 18" tall.
- CLASS 8. *Dry bits sway and dance*  
 Wall plaques. A composition of dried plant material on fabric, tray, bark or board, etc., prepared to be used as wall hanging. Not to exceed 18" high and 12" wide. (8 entries)
- | Scale of Points for Wall Plaques |     |
|----------------------------------|-----|
| General Decorative Quality ..... | 50  |
| Distinction .....                | 25  |
| Color Combination .....          | 25  |
|                                  | 100 |
- CLASS 9. *Rocks and shells and weathered wood.*  
 A composition using driftwood or rocks, shells, etc. Fresh and/or dried plant material. Not over 24" high.
- CLASS 10. *Bouquets for Mommy dear.*  
 An arrangement in a low container suitable for the home. Not over 18 inches high.
- CLASS 11. *Beauties of the wildings.*  
 A composition using plant material that grows wild. Not over 18" high.



- CLASS 12. *Tempting treats to cheer.*  
A composition of fruits and/or vegetables. Flowers and/or foliage permitted. May be in or on a natural container, such as palm spathe, bark, weathered wood, etc. Not over 18" in any dimension.
- CLASS 13. *Holidays are happy times—*  
A composition suggesting any one of the holidays. Not over 18" high.
- CLASS 14. *But Santa comes so slow*  
An arrangement in "Santa's" boot.
- CLASS 15. *To tiptoe in the candlelight*  
A decorative composition using a candle or candles. Painted material and styrofoam base permitted. Not to exceed 18" in any dimension.

CLASS 16. *And kiss 'neath mistletoe*  
Kissing balls—including mistletoe

Scale of Points	
Originality .....	50
Workmanship .....	20
Combination of Materials .....	15
Condition .....	15
	100

CLASS 17. *The dressed-up doll*  
Christmas corsages

Scale of Points	
Design .....	30
Originality .....	10
Distinction .....	10
Color .....	25
Combination of Materials .....	10
Technique .....	15
	100

CLASS 18. *At Christmas tea*  
Table setting for a Doll's Christmas Party. Accessories permitted. Table to be furnished, approximate size 23" by 23". (Six entries)

Scale of Points	
Overall relationship .....	50
Distinction of centerpiece .....	25
Attention to detail .....	10
Condition .....	15
	100

CLASS 19. *And hang bright treasures*  
*On the tree.*  
Hand made or hand decorated Christmas ornaments.

Scale of Points	
Originality .....	50
Workmanship .....	20
Combination of materials .....	15
Condition .....	15
	100

CLASS 20. *Gay reminders picture make*  
A. Litterbug Posters—size 11" x 14"  
B. Junior Flower Show Posters—size 11" x 14"

Scale of Points	
Design .....	30
Originality .....	20
Advertising appeal .....	30
Decorative quality .....	20
	100

- CLASS 21. *Scrapbooks keep for memories' sake.*  
All scrapbooks must be entered by November 15. They must be mailed to Mrs. Alex Laurie, Box 625, Eustis, Florida. Award winners will be exhibited. Size 11½" x 13½".
- A. Birds Seen in Florida—Book of pictures of birds in natural colors either drawn or cut out with description of habits, type of feed, time of year seen and reason for being protected.
- B. Wild Flowers in Florida—Book of pictures in natural colors, either drawn or cut out, of wild flowers found in the state of Florida. Each picture to have a description of the blooming time of the specimen, where it is found, whether it may be picked or is on the Florida Conservation list.

- CLASS 22. *Of words and deeds, no finer art*  
*Than sow a seed and reap a heart.*  
**Educational Exhibit**

## GRO-TONE TROPHY

donated by

**WILSON & TOOMER**



## GULF LIFE TROPHY

donated by

**Gulf Life Insurance Co., Inc.**



## SWEESTAKES TROPHIES

By MRS. ARTHUR F. COE

For the first time in the history of the State Flower Shows, gorgeous Traveling Trophies will be offered to the Sweepstakes winners in the Horticulture and Artistic Divisions.

The GRO-TONE TROPHY, donated by Wilson & Toomer, will go to the lucky person winning the most Blue Ribbons in the Horticulture Division. This coveted award is a sterling, fifty-cup capacity, Paul Revere Punch Bowl of indescribable beauty. In addition to the large Traveling Trophy, the generous donor is giving a five-inch sterling replica of the large bowl, which the winner may keep.

For the most Blue Ribbons won by one exhibitor in the Artistic Division, the Gulf Life Insurance Company, Inc., has donated an exquisite Antique Sheffield Georgian Coffee Urn, circa 1800, capacity 30 cups. This will be known as the GULF LIFE TROPHY, and along with it is a five-inch sterling footed flower container which will be the winner's very own.

The fortunate winners will have their names and the date the trophies are won, engraved upon the large as

well as the small silver pieces. The Traveling Trophies are to be retained by the winners to proudly use until the time of the next State Flower Show when they will again be on display and offered for competition. Each of the trophies represents the finest in craftsmanship and are worthy of the excellence they personify—the Sweepstakes Awards.

A word about the products of our magnanimous donors. Appropriately, the Wilson & Toomer Company have named their trophy for the Horticulture Division the GRO-TONE TROPHY. It is Gro-Tone, the super plant food with natural organic qualities included, that makes it adaptable to Florida soils and popular with home gardeners who grow blue-ribbon plants and flowers.

Like the theme of this administration of the Florida Federation of Garden Clubs, the Gulf Life Insurance Company is FACING FLORIDA'S FUTURE by securing the thousands of their policy holders with Life and Health insurance. A Southern Institution since 1911, this Florida owned business is the donor of the GULF LIFE TROPHY in the Artistic Division of the State Flower Show.

# NEWS CLUB CAST

By *Adelaide O. Nieland*

Summer proved a busy time for Florida garden club members who stayed at home. Although civic projects, fund raising, and similar activities claimed much of their attention, program planning required a major portion of their time and thought. As a result, the programs carefully outlined in advance have clubs now operating smoothly as the year opens this fall.

## City Public Plantings

**The Purity Springs Heights Garden Club of Tampa**, recently admitted to the State Federation, has undertaken the portal planting of the new Chamberlain High School. Much has been accomplished in the one work-day held each month. Peat was added to the window boxes, existing plantings were groomed and new ones established. For the latter, cuttings and plants were contributed by the members. Another recent member of the State Federation, the **North Tampa Garden Club**, is beautifying Hixon Memorial Park on the Hillsborough River. Shrubs will be set out this fall and each January a tree will be planted in honor of the presidents of the nine circles of the club. **The Purity Springs Heights Garden Club** has already initiated such a practice by planting a tree, dedicated to its past president, at the August meeting.

**The Garden Club of the Halifax Country, Daytona Beach**, has completed landscaping the Little Theater grounds by planting 15 palms—Sabal, Sago and Reclinata. A wooded section of the Tusawilla Park development—84 acres in all—will be made a park with recreational facilities according to plans of the **Council of Garden Clubs of the Halifax District, Volusia County**. Since the area abounds in an unusual variety of plants, part of it may later be converted into an arboretum and botanical garden.

**Zephyrhills Garden Club** is working on plantings at the city library, the **Winter Haven Garden Club** has com-

pleted its landscaping for the Chamber of Commerce Building and has continued work on the grounds of the Girls Club of America at Lake Shipp, and the **Graceville Garden Club** has set as its goal for the city three "Miles of Beauty". **The Belleair Garden Club**, having established and continued to maintain Hunter Park, has taken steps to enlist cooperation of the Belleair Property Owners' Association and the town commission in long range civic planning and beautification.

**The Garden Club of Jacksonville** and the **Men's Garden Society of Greater Jacksonville** recently culminated a school beautification contest with the Paxon Junior High School announced the winner in its class. This was good news for **Redbud Circle**, as improvement of the school grounds had been its junior gardening project. Members not only donated or bought plant material, but they also obtained a good supply by asking owners of several houses being demolished to contribute shrubbery.

An improvement drive has been launched by **Tallahassee Garden Club** with each of the 34 circles undertaking some specific project to contribute to the goal of general community beautification. The program as planned will be educational, attempting to demonstrate how homes, businesses, schools, parks, and similiar buildings or areas may be improved by beautification. Residents will be encouraged to cooperate and an award system for noteworthy achievement will be devised.

**Garnier Beach Garden Club** raised funds for much needed recreation and garden equipment for the community park by sponsoring a "Meet Your Neighbor" program and the **Boca Raton Garden Club** earmarked the proceeds of its highly successful French Flower Mart for further beautification of the city.

## Horticulture

"Creative gardening—a joy to grow and to share" is the theme of **Belleair Garden Club's** 1957-58 program with emphasis on horticulture. A monthly horticultural clinic preceding each general meeting will be devoted to finding out why plant specimens may be in poor condition and recommending treatment. "Neighborhood Garden Problems" will be the subject of a panel discussion to be held October 15. This meeting will be open to the public; the program will be conducted in

quiz form and there will be a display of fertilizers, humus, soil specimens and plants.

The **Garden Club of Jacksonville** is continuing its monthly horticultural classes held the first Tuesday of each month at the Garden Center for both members and others who may be interested. The subject covered in September was seed flats and flower bed preparation for fall planting. Subsequent topics to be studied are: annuals and perennials, azaleas, new plants, garden fruits, wild flowers and ferns and summer gardening.

A garden tour was the method used by members of the **Purity Springs Heights Garden Club** to obtain first-hand information on horticulture in general. Mrs. Mary Knight, founder of the club, rendered valuable assistance in the identification of several rare and exotic plants seen in the gardens visited.

The **Hibiscus Garden Club**, oldest in Miami, held workshop sessions during the summer months and grafted 50 rooted hibiscus plants, donated by a local nurseryman, with hybrid cuttings. When these have attained sufficient size, they will be added to plantings in Morningside Park.

#### Flower Arrangement

Two groups of a 65-member corsage class organized in the **Gainesville Garden Club** by Mrs. Alton Morris and affiliated with the National Corsage Club have met regularly throughout the summer. Members attended either a morning or a night session each week, using the lessons in corsage craft prepared by Glad Reusch as a guide. Later the Gainesville Club plans to exchange designs with the **St. Petersburg Club**, first to organize such a hobby group.

The **Orlando Garden Club** provided a treat for its members who remained in Florida for the summer by sponsoring a one-day workshop on flower arranging in August with Mrs. Jack White, Live Oak, instructor. **Miami Springs Garden Club** will co-sponsor a flower show in Simpson Garden Center with the **South Florida Garden Club** of Miami and the **Coconut Grove Garden Club**. "Thanksgiving Thankfulness" will be the theme.

**North Tampa Garden Club** has completed plans for its specialty show to be held December 14 in the Seminole Garden Center and **Orlando Garden Club** has likewise been busy preparing for its December Show.

**Gainesville Garden Club** has scheduled a lecture on flower arrangement October 5, with Mrs. Ira J. Varnedoe, Jacksonville, as featured speaker. In February the club will hold an all-day flower arrangement workshop under the direction of local judges.

Looking ahead to flower show time, a clinic on flower show practice for members of District IV will be held in Palatka, November 7. Mrs. J. Lynwood Price is chairman.

#### Garden Centers

The **Community Garden Center of Daytona Beach** maintained summer hours from 10 a.m. to 4 p.m. Tuesdays and Wednesdays. **Gulf Area Garden Club**, having plans for a Garden Center, has already received a set of silver for its future home. A spacious addition to the club house of **Sunset Park Garden Club, Tampa**, has been completed and landscaped with a variety of attractive plants.

The building program of the **Garden Club of Jacksonville** continues to gain momentum with work on an auditorium to seat 800 people expected to begin in the near future. Fund raising projects carried on through the summer were climaxed with a "Brick Day" celebration which brought in \$15,000. 46 circles reported 100%. With about \$80,000 previously saved toward the new building, the club now has approximately \$100,000. The balance still needed will be raised through various fund-raising activities with the building committee directed by Mrs. Charles Henley, chairman, leading the way. The committee sponsored first night sales of the film "Around the World in 80 Days", shown at Five Points Theater August 14, and all proceeds were earmarked for the building fund.



AVONDALE CIRCLE proudly displays its 100% participation in The Garden Club of Jacksonville's "Brick Day." Members, wearing yellow dresses and hats, rode in a yellow car decorated with matching streamers and a sign made of flowers.

**Begonia Garden Circle, Jacksonville,** plans to bring Mrs. Emily Steubing, a widely known and popular lecturer, to South Georgia and Florida for a series of lectures the last week of October. Speaking on table settings, flower arranging for the home and similar topics, Mrs. Steubing's appearance in Jacksonville will be sponsored by the circle in working toward its gift for the building fund. Contact Mrs. Nelso Murray, 5164 Yacht Club Road, Jacksonville, for further information.



### GROUND BROKEN FOR GARDEN CENTER

Mrs. John W. Cummings, right, President of the GARDEN CLUB OF ST. PETERSBURG, used a gilded, flower-decked spade to break ground for the Club's new Garden Center at Fifth Avenue South and Sunset Drive on July 8. Looking on are, from left, Mrs. George J. Chisholm and Mrs. J. A. Mennell, construction and completion committee members and Mrs. O. Jack Robertson, committee chairman.

Plans call for a \$40,000 cement block building with an attractive glass foyer and a movable stage in the auditorium which will seat 600. There will be a storage room, caretaker quarters, a modern, well-equipped kitchen, ladies' lounge, men's room and library. The five-acre tract on which the Center will stand has been leased from the "Sunshine City" for 50 years with an option for renewal.

### Roadside Development

The Lake Helen Garden Club has begun a clean-up, paint up, planting campaign to beautify the main roads leading into and through Lake Helen. Sabal palms, daylilies, and other hardy plant material donated by members of the Gainesville Garden Club, along with 1000 Louis Philippe rose bushes given by Southern States Nursery Company, were used to beautify the center strips of U.S. Highway 441

south of Gainesville this summer. The State Road Department and the city cooperated in the project, the city laying water pipes and the Road Department carrying on the actual planting. No small part of the work was the establishment of a beautiful and adequate roadside park which, for more than 10 years, has been an objective of the Gainesville Club.

### Conservation

Three members of Ortona Garden Club attended the Blanche Covington Nature Study Course.

Twenty-three garden clubs gave \$50 Conservation Scholarships for teachers attending the Conservation Workshop held at Florida State University, Tallahassee. The Jacksonville Garden Club contributed three scholarships and seven were given by the Delray Beach Council of Garden Clubs and its affiliated clubs: Evening Garden Club, Garden Study Club, Hibiscus Garden Club, Orchid Garden Club, Sea Grape Garden Club and Seedling Garden Club.

Other clubs donating one scholarship each include: Mandarin Garden Club, Gainesville Garden Club, Pioneer Garden Club of Ocala, Azalea Circle of the Ortona Garden Club, Lake County Council of Federated Garden Clubs, Tropical Garden Club of Tampa, Rose Circle of the Tampa Federation of Garden Club Circles, Estero Garden Club, West Palm Beach Garden Club, Inc., Boca Raton Garden Club, North Miami Garden Club and Pompano Beach Garden Club, Inc. Sunset Garden Club of Miami gave a substantial contribution toward a scholarship.

### Garden Therapy

Tuscawilla Garden Club, Daytona Beach, won the Ivey Achievement Award for its outstanding garden therapy work with the pre-school handicapped children of Highlands School. The untiring efforts of Mrs. T. Converse Wing, garden therapy chairman, and Mrs. J. M. Sullivan were largely responsible for this recognition.

A District VIII Garden Therapy workshop is scheduled for November 20 at Lido Beach Casino, Sarasota, with Mrs. Donald J. Donohue, 221 N. Park Blvd., Venice, district chairman, in charge.

### Junior Gardening

The "Marina" on Clearwater Beach was the scene of District VIII's Junior Garden Workshop, conducted by Mrs. W. E. Turner, Route 2, Box 969, Largo,

district chairman, on September 18.

Mrs. Louis Novelty, 3635 N. W. Third Street, Miami 35, chairman, has announced:

District XI's JUNIOR LEADERS CONFERENCE AND WORKSHOP will be held October 18th at Hugh Taylor Birch State Park, Fort Lauderdale, with the Federated Garden Clubs of Fort Lauderdale as hostess group.

#### Landscape Design

The Pioneer Garden Club of Ocala, in cooperation with the Marion County Vocational School, sponsored a course in Landscape Design held one night a week for six weeks. Stockton Renfroe, a Hume Fellow and graduate of the University of Florida, was the instructor. An interesting feature was a visit to a local nursery where much was learned as to the landscape value of a variety of plants.

#### Miscellaneous

The radio-TV programs over WTHS-TV with Mrs. Sheldon Smith of District XI, chairman, will be resumed in October. Again 30-minute periods will be devoted to various phases of gardening.

Two groups of District 1, **Rose Circle of the Crestview Federation and Valparaiso Garden Club**, held hat contests for their installation luncheons. The winning entry worn by the litterbug chairman of the Valparaiso Club actually did "tell a story", as the rules of flower arrangement require, as it was a cleverly assembled litterbug hat. **Palm River Garden Club**, District VIII, honored all past presidents of the club in connection with its installation luncheon at the Civic Center. **Tropical Garden Club, Tampa**, gave officers handsome Schefflera plants, instead of corsages, at its installation luncheon.

**The Garden Club of Winter Haven**, sixth member of the Florida Federation, recently celebrated its 30th anniversary with a banquet at Cypress Gardens and Roger Early, former educational director of Florida Audubon Society, as featured speaker. **Hialeah Garden Club** plans to observe its seven years in the Florida Federation by having a birthday party October 15, honoring the past presidents and teachers who have served the club through the years. "Growing" is the appropriate theme chosen for the year ahead with the goal set to double club membership.

# WATCH

something  
beautiful  
happen  
when you use

*Energized*  
**Vertagreen®**

on  
lawns, flowers,  
trees, shrubs,  
vegetables

ARMOUR  
FERTILIZER  
WORKS  
Atlanta  
Georgia



## DOUBLE SAFETY for PRECIOUS FLOWERS



You need just two products—ISOTOX Garden Spray and Florida VOLCK Paste Emulsion to protect azaleas and camellias against most insects such as aphids, scale, lacebugs, thrips, etc. Mix together in your ORTHO Spray-ette, which attaches to your garden hose, and spray both at the same time.

ORTHO products are sold at all leading garden supply stores.

T.M.'S REG. U. S. PAT. OFF.  
ISOTOX, VOLCK, ORTHO

ORTHO

CALIFORNIA SPRAY-CHEMICAL CORP.  
Richmond, Calif., Washington, D.C.

201.01/135

090457



Pictured at the Rood-Williams American Legion Post Home in Jupiter at the DISTRICT X PRESIDENTS' CONFERENCE are District Director Mrs. Graham W. King, Delray Beach, and Florida Federation President Mrs. Vernon L. Conner (seated left to right), Mrs. C. R. Mayes, Jr., Federation First Vice President, and Mrs. Henry S. Pennock, Jr., President of Trave'er's Palm Garden Club of Jupiter who also is Life Membership Chairman for the Florida Federation of Garden Clubs, Inc., standing left to right.



Mrs. Vernon L. Conner, Mt. Dora, (right) President of the Florida Federation of Garden Clubs, Inc., compares notes with Mrs. J. E. Laughinghouse (center), District VII Director, and Mrs. C. R. Mayes, Jr., Pompano Beach, FFGC First Vice President, (left) at Orlando Garden Center where Conway Garden Club served as hostess group to the annual DISTRICT VII PRESIDENTS' CONFERENCE.

## EVERGLADES NURSERY, INC.

"Largest Growers of Palms  
in America"

Open to Visitors — Anytime

**McGregor Blvd.  
Fort Myers, Florida**

FOR ALL YOUR GARDENING NEEDS

It's

## VOLUSIA GARDEN SUPPLY

942 Volusia Avenue

**Daytona Beach, Florida**

**JIM EMMONS, owner**

*If You Can't Find It—We'll Ship It  
Anywhere in the State*



DISTRICT IV PRESIDENTS' CONFERENCE at Jacksonville Beach. Seated, from left, are Mrs. Vernon L. Conner, Mt. Dora, President of the Florida Federation of Garden Clubs, Inc., principal speaker, Mrs. Carroll Griffin, Jacksonville Beach, Director of District IV, and Mrs. C. R. Mayes, Jr., FFGC First Vice President, of Pompano Beach. Standing is Mrs. Frank Brown, president of the Ribault Garden Club who hosted the Conference. (Broughton Photo)



Seated with Mrs. M. C. Kayton, Wauchula, Director, at the PRESIDENTS' CONFERENCE OF DISTRICT IX, held in the Methodist Church at Avon Park, are Mrs. Vernon L. Conner, President of the Florida Federation of Garden Clubs, Inc., (center) and Mrs. C. R. Mayes, Jr., State First Vice President, right. Standing, from left, are Mrs. George Kelsey, President of Avon Park Federation of Garden Clubs, and Mrs. B. F. Camp, Conference chairman.

## European Garden Tour

By MRS. JOHN R. PARKINSON, *Chairman*

A trip to visit many famous European gardens in the company of a congenial group has long been a dream of many of our members. The opportunity is now offered through a tour sponsored by the Florida Federation. Arrangements have been made for a European Garden Tour in 1958 which will include the basic tourist attractions with added emphasis on gardens. Of special interest will be the Chelsea Flower Show in England and the World's Fair in Brussels.

The ship will be the French Lines' LIBERTE — sailing date from New York City is May 21 and return date July 6. The all-expense tour will cost approximately \$1465. Some of the world-famous hotels listed are the Grosvenor House in London, George V in Paris and the Excelsior in Rome.

Each group will be limited to 20 to 27 members and will be conducted by a man of considerable experience as a Tour Leader.

The plan for the European Garden Tour was approved by the Executive Board at the June meeting and Mrs. Conner appointed a committee composed of Mrs. Eugene A. Smith, Mrs. W. M. Allison, Mrs. Reuben H. Bowden and Mrs. John R. Parkinson, chairman, to make the arrangements.

Each member will soon receive a brochure from the Duffy Travel Agency giving the details of the 1958 European Garden Tour.

### Will Your Club Win?

The Executive Board also voted to set up a plan whereby a free trip would be given in 1959 to a garden club member from the club winning the most points during the next two years according to the "Merit Rating Scale of Points for the European Garden Tour" to be printed in winter issue.

The 1958 Tour is open to our Florida Federation members, their families and friends. Let us make our plans early and arrange our parties for this delightful trip! Clubs will find it advantageous to organize their activities immediately in order to win the free trip for a member in 1959. The long desired opportunity—a European Garden Tour with congenial friends—is here! !



**MRS. CLYDE H. PETTIJOHN**

*Horticulture Chairman, Winter Haven*

Mrs. Clyde H. Pettijohn has served as president of Azalea Garden Club and on many committees in the Winter Haven Council of Garden Clubs.

Born in Marietta, Ohio, she has been a resident of Winter Haven since 1905.

A past president of the WMS, First Baptist Church, where she was Youth Counselor and taught Sunday School for 25 years, she now represents her church on the City Welfare Board.

An American Red Cross First Aid Instructor in World War II, she is an active Gray Lady and a 30-year member of the American Legion Auxiliary. She also is a Past Matron, O.E.S.

She is a member of the American Rose Society, American Orchid Society and West Coast Orchid Society with whose study group she studies. Mrs. Pettijohn also is a Nationally Accredited Flower Show Judge.

Gardening is her hobby and with her husband she combines business with pleasure, operating Key Drug Store, Inc. for a living and collecting orchids for fun.

They have two sons, Clyde, Jr., and Earl, and two adorable granddaughters.



# Posies, Plants and People

By MRS. CLYDE H. PETTIJOHN, *Horticulture Chairman, Winter Haven*

Summer has passed all too quickly and our lazy days are over now. September garden duties were many and varied and we are sure you have already cultivated your garden plot, adding peat, compost and manure so it will be ready for all annuals.

The sweetpea trench should also have been dug, enriched and filled with compost ready to plant. A tour of inspection of shrubs was in order, with sharp clippers in hand to snip off or remove any undesirable or dead branches that had accumulated during the summer. Hibiscus should have been checked for snow scale and last year's roses will have been sprayed and fertilized.

October is a wonderfully refreshing month in Florida and truly a very busy one. Organizations having put aside activities in early summer are now resuming their labors.

## Time To Plant

If you enjoyed gardening in your arm chair this summer you have already selected and ordered seed for your annual garden. The very best quality of seeds or plants pays dividends and are less expensive in the long run for you can depend on them producing exhibition bloom. They must be planted now to produce early spring flowers. Protect your newly planted seeds from ants, for these little beggars will carry them away. Dusting sulphur gives them fits!

Maybe you have anticipated our State Flower Show, "Floridarama", in Eustis Dec. 6-8, by extra early planting of annuals. If so, be sure to fertilize, cultivate and water regularly to advance growth and bloom in time for the show. As they grow, begin staking all spike flowers for exhibition specimens.

## Grow Better Roses

It's rose time folks, and we had better be diggin' and doin' if we want to have specimens for the show. Select a good sunny location for your rose bed, free from intruding tree roots, good drainage. A pH of 5.5 to 6.5 and lots of humus are necessary for good roses. By proper feeding, watering and pest control you will have your roses well in hand and they will reward you again and again with beautiful blossoms.

This is your last chance to pinch back poinsettias and bougainvillea in order to have more blooms on more compact plants.

Gladiolus are a most satisfactory corm to plant almost any time of the year. Be sure to add fertilizer in the bottom of the trench before planting. A side dressing of fertilizer in about six weeks after planting with plenty of water at regular intervals will aid in pushing the bloom. Some support can be given to insure straight stems.

If you are fortunate enough to own clumps of Admiral Bird shasta daisies, Stokes asters and daylilies now is the time to divide them and make a new home for them in enriched soil.

## Begin Grooming Now

With "Floridarama" just two months away you probably have already disbudded your early flowering camellias to produce good specimen bloom. Grooming of all potential exhibits of pot plants will begin now. Cultural perfection is your goal. Watering your plants carefully, first testing surface soil for dryness, and a small weekly application of fertilizer will help attain this goal. Give African violets a quarter turn each day for symmetrical plant growth. Check your plant names now so you will not arrive at the show with an unnamed specimen.

Plan to exhibit in the State Show for without cooperation from every district it will fall short of being an All-Florida show. Contact your District Horticultural Chairman for advice on packing and posting your exhibits to Eustis if you cannot attend. Study and practice the conditioning of your flowers so you will have the method well in hand by show time.

An element of challenge enters this great show for we want others to see the HORTICULTURE of our state as we see and love it. Florida is fast becoming a state widely known for more than citrus industry. More than ever we are being known as the "Land of Flowers". Great shipments of flowers leave our state regularly and as gardeners we must keep up with the times!

The future holds for us only what we plant today so let us "Face Florida's Future with Flowers" by starting now to plant for tomorrow.

# 27 BANKS serving **ALL** FLORIDA

From Pensacola to Key West, the 27 member banks in the Florida National Group of Banks, are serving industry, agriculture and the individual; aiding in the growth and development of this great State.

## FLORIDA NATIONAL GROUP OF BANKS



MEMBERS F. D. I. C.

*Bring Your Beauty  
into  
Full Bloom  
at*

*Augie's Enchanted Mirror  
Beauty Centers*

*Orlando*

*Winter Park*      *DeLand*

*Ph. 4-7319*      *Ph. 2-0789*      *Ph. 2-1467*      *Ph. 5-5392*      *Re 4-5026*

## Commercial Bank

"The Bank of Friendly Service"

— at —

Daytona Beach, Florida

Member Federal Deposit Insurance  
Corporation

## WELCOME NEW CLUBS

- District 1
  - Driftwood Garden Club,
  - Gulf Breeze
- District IV
  - San Jose Garden Club,
  - Jacksonville
- Hemerocallis Garden Club,
- Fernandina Beach
- District VIII
  - Purity Springs Heights Garden Club,
  - Tampa
- North Tampa Garden Club,
- Tampa
- Gulf and Bay Garden Club,
- St. Petersburg Beaches
- District IX
  - Royal Palm Garden Club,
  - Fort Myers
- District XI
  - Town and Country Garden Club,
  - South Miami
- Perrine Garden Club, Perrine
- Cutler Ridge Garden Club,
- Cutler Ridge

## IN MEMORIAM

Mrs. Jesse O. Hyden, associate newscast editor from District XI and long active in the state federation's program, who passed away at Miami on June 18, 1957. "To live on in the hearts we leave behind is not to die"

## NEW LIFE MEMBERS

Life Memberships in the Florida Federation of Garden Clubs were recently presented to Mrs. C. R. Mayes, Jr., by the Pompano Beach Garden Club; Mrs. Carl S. Scheffel, by South Florida Garden Club of Miami; and Mrs. A. Marshall Mullikin, by the Garden Club of Winter Haven.

## CONWAY SCHEDULES MIAMI APPEARANCE

The Floralia Club, Miami Chapter 4, will present J. Gregory Conway, internationally known in the art of flower arranging and interpretation, in a series of lectures and workshops at the Miami Woman's Club, November 7-8.

Two lectures, including one on "Christmas Holiday Ideas" will be given Nov. 7 and on Nov. 8 workshops for the beginner and for the advanced student will be conducted. Lectures are \$3 each and the price of each workshop is \$4.



# YOUR STATE CHAIRMEN SPEAK

## BUDGET AND FINANCE

Be it Circle, Club or Federation we all are proud of our membership in the Florida Federation of Garden Clubs. We all need finances for our projects. Now, we can support a State plan that will bring funds to all!

Where else can you buy tea sized paper napkins bordered by Southern Wild Flowers in color and designed by a fellow Garden Club member?

Buy napkins in cartons of 200 packages for \$50.00.

SELL THEM at 35c a package or 3 for \$1.00, giving 33% profit for your Circle or Club.

Help your Circle, Club and State Federation by sending your order with check to:

**MRS. R. H. BOWDEN,  
MANDARIN, FLORIDA**

## CITY PUBLIC PLANTING

Governor LeRoy Collins will proclaim January 12-18, 1958, as "Plant Florida Week". We hope every garden club member will plant her favorite blooming plants during this period.

Properly planned City Public Planting is good business, pays for itself and is a mark of progressiveness. It lends dignity, stimulates community pride, contributes to better living and is the best advertisement a city can offer. Even a simple planting at entrances to a town makes a pleasing picture and gives a welcome.

School ground planting, using the principles of landscape design, will create in our Juniors a consciousness and appreciation of beauty.

We urge each Club to create beauty in its town by planting flowering trees and shrubs. Help us MAKE FLORIDA BLOOM!

Try for one of these awards: City Public Planting, Madira Bickel Civic Achievement for an inspiring civic project, Alice Rush McKeon Bronze Medal on a Mile of Beauty within city limits, Junior School Beautification, Hemerocallis Landscaping Project, and the South Atlantic Regional "Landscaping of School Grounds" project.

**Mrs. Archie H. Comer, Chairman**

## CONSERVATION

CONSERVATION EDUCATION is the theme of this two-year program.

Today's woman is possessed with information, facts, an open mind and seeing eye, the better to discern the wise use of all life's factors. Primarily concerned with her family and the wise use of her purchasing dollar in present standards of living, health, recreation and education, she must be aware of Florida's resources—natural and renewable, social and scientific. To use wisely these factors she is alert, active and interested in:

1. EDUCATION. The 3-week CONSERVATION WORKSHOP FOR TEACHERS, July 7-25, 1958, FSU, Tallahassee, carries graduate or undergraduate credit. Has your child's teacher had an opportunity to attend? A \$50 scholarship is offered counties.

2. DISTRICT CONFERENCES—planned, with panel discussions, to inform members on local, state-wide and current problems.

3. CLUB PROGRAMS to make the individual aware of basic conservation concepts, state and national problems.

4. ARBOR DAY, Jan. 17, 1958, with emphasis on tree planting, cooperating with Junior and Civic Beautification chairmen.

5. PROTECTED PLANTS and those needing protection must be known. Information on propagation is needed.

6. CONSERVATION MATERIALS have been prepared for each chairman—the club's resource person on CONSERVATION! Read your copies, plan your program, ACT! !

**Mrs. Robert L. Fairing, Chairman**

## CONSERVATION CONFERENCES

- I—Nov. 5, Fort Walton Beach.
- II—Nov. 6, Marianna State Caverns.
- III—Nov. 7, Tallahassee Garden Center.
- IV—Oct. 30, Fort Clinch State Park, Fernandina.
- V—Oct. 29, O'Leno State Park, High Springs.
- VI—Oct. 16, Titusville.
- VII—Oct. 15, Orlando Garden Center.
- VIII—Oct. 23, Tony's Restaurant, 3300 South Dale Mabry, Tampa.
- IX—Oct. 15, Highlands Hammock State Park, Sebring.
- X—Oct. 14, Jonathan Dickinson State Park, Hobe Sound.
- XI—Jan. 13, 1958, Loxahatchee National Wildlife Refuge

### BLUE STAR MEMORIAL HIGHWAYS

An objective of National Council is the placing of markers on Blue Star Memorial Highways in perpetual tribute to the nation's Armed Forces.

Garden Clubs can find few more noteworthy projects than planting "Miles of Beauty" with fittingly landscaped Blue Star Memorial markers as focal points along designated and as yet unmarked routes.

Working with related committees our goal will be to get many markers placed on "Miles of Beauty" along Florida's Blue Star route from Jacksonville to Key West, thence to Tallahassee via the West Coast and eventually to the Alabama line beyond Pensacola. We already have 9 markers on the East Coast! Neighboring clubs may pool their funds to secure official markers which cost \$112.

Mrs. George J. Roark, Chairman

### JUNIORS' GARDENGRAPHIC

Mrs. W. E. Turner's illustrated basic guide for work with Juniors. Covers all phases of instruction. Price \$1.50.  
(plus tax)

— and —

### 101 IDEAS FOR FUND RAISING

Compiled by Melbourne Garden Club. Price \$1.25.  
(plus tax)

Send check with order to:

Mrs. Anderson Burnett,  
Book Service Chairman

3311 First Street, West  
Bradenton, Florida



WELCOME  
TO  
THE  
SUNSHINE  
CITY

*and*

**RUTLAND'S**

Fifth and            Garden at  
Central              Cleveland

**St. Petersburg    Clearwater**

### UNUSUAL TROPICAL PLANTS

Exotic Trees, Shrubs, Vines, Fruits  
New Plant Introductions

### HIBISCUS SPECIALISTS

Plant List On Request

## The Palmer's Garden & Nursery

5063 Dartmouth Avenue, North  
ST. PETERSBURG, FLORIDA

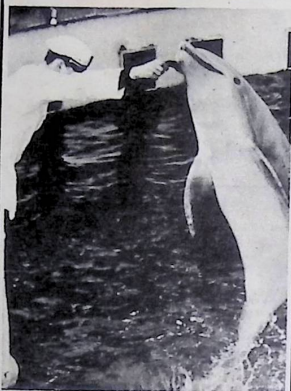


## THE SORENO

extends a cordial invitation to all members of the Florida Federation of Garden Clubs. We welcome you for the Convention and any time you have occasion to visit the "Sun Coast" of Florida.

**SORENO HOTEL**  
ST. PETERSBURG, FLORIDA

## SEE FLORIDA'S GULFARIUM



FORT WALTON BEACH, FLORIDA

Thanks to the Florida Federation of Garden Clubs for fighting long and hard for intelligent planning and zoning legislation!

Please continue to work with us in Protecting Florida's Future! We need your individual and direct participation in FPZA affairs. Membership, including "Newsletter of Florida Planning and Zoning" is \$5. Separate subscription to the Newsletter is \$3.

### FLORIDA PLANNING AND ZONING ASSOCIATION

P. O. Box 783

Auburndale, Florida

## CENTRAL STATE WELL DRILLING

Has Drilled Some 4200 Wells Which Produce Water in Abundance For Many of Florida's Beautiful Homes and Gardens.

Pumps — Irrigation — Hardware

### MARSHALL AUTON

Logan 7-5328

Route 3, Box 145 — Dade City, Florida

## DO-IT-YOURSELF CLUB PROGRAMS

In planning programs, chairmen are urged to use membership participation in those of a Do-It-Yourself nature.

The objectives this chairman hopes to accomplish include an **INDEX FILE** on **SPEAKERS**. In order to have a more complete file, all members are urged to send their name, address, program subjects and topics, the distance you are willing to travel, fee if any and/or expenses. Also send recommendations of excellent speakers. From these files we plan to compile a statewide **SPEAKERS LIST** for distribution. An index card will be kept on those unable to go outside the district.

Another objective is to compile a booklet on Do-It-Yourself programs, which will include outlines of programs on every phase of our work, with emphasis on the most important. All members are requested to send program ideas in outline form; original ideas for themes and topics, educational plays, skits and monologues are solicited. Be sure to give your name, address and the name of your club to this chairman, so credit may be given. The deadline for material is Nov. 15, 1957.

Mrs. C. R. Mayes, Jr., Chairman

## GARDEN THERAPY

Garden Therapy is faith given the mentally ill and physically handicapped through associating with nature in the healing art of gardening. It is a step toward conserving human life.

We do not give package solutions to clubs. In each area problems differ in detail and emphasis and it is the duty of local people to solve them. Clubs should make a survey of the community needs then plan their therapy program.

Practice Garden Therapy by working with government institutions in ways suggested by Occupational Therapists, and organize garden clubs for the physically handicapped. Suggestions: Seed flats-potted plants-dish, button, scented and miniature gardens in crippled children's homes, orphanages, blind, correctional and mental institutions and hospitals.

The May-June issue of **National Gardener** has an excellent article: Therapy, Projected Books. For information write: Projected Books, Inc., 313 First Street, Ann Arbor, Michigan.

District Therapy chairmen have been given suggestions prepared to advance this work. If clubs or members have new or novel ideas, this chairman will gladly pass them along to others.

**Mrs. F. E. Mitchell, Chairman**

### JUNIOR GARDENING

Children of today will be our citizens and leaders in Florida's future. If we can instill in them an appreciation of beauty, an abhorrence of littering in towns and along highways, good landscaping principles and gardening know-how as well as the value of our natural resources and concern for the less fortunate, we will be facing up to our responsibility in planning for the future of our state.

Every Garden Club should sponsor a Junior Club, budgeting funds for its support. Programs, to be coordinated at school pre-planning sessions with curricula work, should include horticulture, conservation, nature study, landscape design, garden therapy, litterbug campaign, flower shows and flower show practice.

District workshops, University short courses and Blanche Covington Nature Study Course offer excellent opportunities for training Junior leaders.

Your chairman heartily endorses the Juniors' Gardengraphic and recommends that every Junior leader secure a copy for use. Slides, film strips, books and other helpful materials are available through district Junior chairmen.

**Mrs. C. E. Saunders, Chairman**

### CORSAGE SYMPOSIUM PLANNED

A Corsage Symposium especially for Junior and Garden Therapy leaders will be held at the Lion's Den in Dunedin Nov. 14 from 10 a.m. until 4 p.m. under auspices of National Corsage Club.

Glad Reusch, national director, will demonstrate working with fresh flowers and dried materials, "quickies" for young children to make. Hats made of cecropia leaves, with matching corsages, will be modeled and there will be an exhibit of Garden Therapy projects in original and inexpensive form.

Mail reservations with \$1 registration fee to Mrs. Augusta L. Feiner, 758 Wood Street, Dunedin, by Nov. 2.

## GREATEST GROWING POWER

with Chatelier's water soluble  
plant food

More plants actively fight starvation during the rainy season than any other time of their lives. Protect all your plants with Chatelier's. You may feed them two or three times weekly . . . this provides food immediately during their lush growing cycle. Chatelier's is complete—needs no supplements.

Mix Chatelier's with your insecticide and spray all bushes, trees and lawn. Chatelier's eliminates the shock that insecticides often cause.

100 gallon  
size

89c

**Chatelier's®**  
WATER SOLUBLE

**PLANT FOOD**

Write for Free Booklet

Box 7-E, Osprey, Florida.

### KARL J. MUELLER

Creates and Installs Stained Glass Windows  
For Many of Florida's Beautiful Churches  
and in addition

Offers Restricted Building Sites and  
Distinctive Ranch-Style Homes

— at —

ZEPHYRHILLS, FLORIDA

"City of Pure Water"

Remember When In  
DAYTONA BEACH

It's The  
**DAYTONA PLAZA  
HOTEL**

Seabreeze Blvd. and The Ocean

**IDEAL**

**FOR**

✓ clubs  
✓ churches  
✓ small  
businesses



**Elliott**

**ONLY \$60**

## ADDRESSERETTE

Prints From 15 to 21 Different Addresses Per Minute — From 5-7 Times Faster Than Hand Addressing. Uses Stencils Size 1 1/2 x 3.

Write For Information if the Size of Your Mailing List Requires One of Our Faster Addressing Machines.

**CHECK WITH**

**George Stuart**

**ORLANDO, FLORIDA**

Corner Robinson & Magnolia  
Phone Garden 5-4511 — Free Parking

WELCOME

District VIII Annual Meeting

## MACAULAY LAWN and GARDEN SUPPLIES

1039-1941 Central Avenue

**ST. PETERSBURG, FLORIDA**

Phone 7-6739

## CLEWISTON INN

CLEWISTON, FLORIDA

(Finest Small Hotel South)

COMPLETELY AIR CONDITIONED

LOVELY ROOMS

DINING ROOM

BANQUETS AND MEETINGS  
WELCOMED

Phone YUkon 2-3501

## LANDSCAPE DESIGN

To develop in every member and every member's community a deep consciousness of Landscape Design; to assist in acquiring a foundation of knowledge in this field for a better understanding and application of its principles; to aid Florida by taking steps aimed at timely planning for her cities; and to win again the National Award in Landscape Design for accomplishments in 1958 are objectives of this chairman.

All clubs, to help attain these goals, are urged to stress the following: A landscape design lecture as club or circle program, a landscape design class in a flower show, a landscape design program for Junior clubs, a landscape design study group or Book Club, a landscape design workshop, and a landscape design short course, open to the public.

To advise and assist you throughout the year, each District has a Landscape Design chairman who is kept informed on every phase of this program—speakers' lists, bibliographies, program suggestions, contest rules and methods of conducting workshops and setting up short courses. Consult her, cooperate with other committee chairmen in carrying out your landscape program and to help win the National Award send information and clippings on such activities to your State Chairman of Landscape Design.

Mrs. G. O. Gjoerloff, Chairman

## LITTERBUG

MAKE FLORIDA BLOOM—But not with facial tissues along our highways! Instead, promote city and county clean-up drives enlisting cooperation of civic groups, officials and Junior gardeners.

Use every media of publicity to put "Don't Be A Litterbug" campaign across and get banks, telephone and power companies to have "Don't Be A Litterbug-Keep Florida Clean" rubber stamps made for use on notices.

Establish distribution centers for litterbags and get a bag in each car. Secure, for free, from service stations fifteen-gallon oil drums for TRASH cans. Clean, paint, stencil and place in recreation centers, bus, train and service stations. Use "Don't Be A Litterbug" stickers on your cars! !

Mrs. Sidney Davis, Chairman



## FLORIDA GARDENER CIRCULATION

It would help this department if each club would keep a mailing list of its membership such as is in our files and send in only, on separate sheets, the change of addresses, new members added and deletion of members no longer in the club.

Each sheet should have the name of club, date, city and where possible the code number.

There are hundreds of mailing plates made for each issue. This is an added expense in the cost of operating this department. Please send 10 cents for each mailing plate to be made whether it be for a change of address for a member or for added new members.

In sending changes or additions, please type or print and in all cases give your club affiliation. Include circle and/or club and city in identification.

Mrs. Andrew A. Gurke, Chairman

## ROADSIDE DEVELOPMENT

Flowering trees and other colorful flora will make Florida "bloom" and create Miles of Beauty if the wish of our president, Mrs. Vernon L. Conner, is realized and the roadside program successful during the next two years.

Functional Miles of Beauty, planted in cooperation with the State Road Department, will benefit all citizens of Florida, create a beautiful picture for all those visiting our state, and serve as living memorials to our efforts.

A Civic Club Roadside Directory, in a naturalistic setting, would eliminate the random placing of civic markers near the entrances to cities and give an opportunity for the planting of flowering trees and low growing shrubs as the beginning of a Mile of Beauty.

Offered in Florida for the first time during this administration is a State Award for the planting of 50 or more flowering trees. Winter and spring blooming trees, grouped together, will give a profusion of color most of the year. To complete the picture use some of the beautiful vines that enhance the Florida landscape.

With roadside beauty as our goal, let us face Florida's Future with enthusiasm!

Mrs. Sam I. Nix, Chairman

**NUMBER  
1705**

**PLANT FOOD**

Has For 25 Years Proved Its Worth in  
The Culture of Flowers, Ornamentals  
and Vegetables

**"Produces More With Less"**

Manufactured By

**THE GRO MOR  
COMPANY**

Plant City, Florida

## LAWN and GARDEN SUPPLIES

**CRENSHAW-McMICHAEL  
SEED CO.**

1532 Franklin Street

**Tampa, Florida**

Phone 2-7974

**Largest Selection  
of**

**The Usual and the Unusuals  
Shrubbery and Indoor Plants  
in  
Northwest Florida**

**Bulbs Fertilizers Insecticides**

**PIPER GARDEN  
CENTER**



**Box 73, Eglin Hiway  
Fort Walton Beach, Florida**

**Money For Your Club!**

**Tropical  
homemaker and  
gardener**

Subscriptions to  
TROPICAL HOMEMAKER AND GARDENER  
placed through your club, will put money  
in your treasury.

TROPICAL HOMEMAKER AND GARDENER  
P.O. Box 56, Buena Vista Station  
Miami, Florida

# FLOWER SHOWS SCHEDULED

By MRS. H. J. DAVIS, *Chairman, Quincy*

1957

- October 29—November 2 Fall Flower Show, Tallahassee Garden Club, North Florida Fair Grounds, Tallahassee  
December 6-8 "FLORIDARAMA" — STATE FLOWER SHOW — Lake County Council of Federated Garden Clubs, National Guard Armory, Eustis.  
December 14 North Tampa Garden Club Flower Show, Seminole Garden Center, Tampa

1958

- February 12 "THE STROLLING FLOWER SHOW", Periwinkle Garden Club, Fort Myers  
February 28-March 2 Annual Flower Show, Key West Garden Club, West Martelle Tower, Key West  
March 3-4 Belleair Garden Show, Bellevue - Biltmore Hotel, Belleair  
March 8-9 Spring Flower Show, West Palm Beach Garden Club  
March 12-13 Spring Flower Show, Sarasota Garden Club, City Auditorium  
March 13-14 Spring Flower Show, Lake Wales Garden Club, Garden Center  
March 14-15 "THE GREEKS HAD A WORD FOR IT", Garden Club of Lakeland, Civic Center  
March 15-16 Spring Flower Show, St. Lucie County Federation, Fort Pierce  
March 21-22 Spring Flower Show, Manatee River Garden Club, Bradenton Garden Center  
March 22-23 "FLORIDA LIVING", Federated Garden Circles of Palatka, Civic Center, Ravine Gardens  
March 22-23 Spring Flower Show, Fort Myers Garden Club  
March 22-23 Spring Flower Show, Traveler's Palm Garden Club, Jupiter  
March 28-29 "A GARDEN OF KNOWLEDGE", Tampa Federation of Garden Club Circles, Pan-American Bldg., Florida State Fair Grounds  
April 12-13 Spring Flower Show, Melbourne Garden Club

## FLOWER SHOWS

We urge you to make the effort to stage a Flower Show this year. Make it BEAUTIFUL! Make it EDUCATIONAL! If it is STANDARD it will be both! Include a Junior section and work for a "fifty-fifty" balance between Artistic and Horticultural Divisions. Your town and your club will benefit from a show.

If this is to be your first, let us send you the Kit that explains the HOW and WHY of staging Standard shows. For FREE Flower Show Entry Tags write The ARMOUR CO., Box 599, Jacksonville.

Register your show, sending the state chairman a card naming the place, date, theme and sponsoring club or circle.

Attend and participate in the State Flower Show at Eustis, Dec. 6-8. Wonderful door prizes and traveling tro-

phies are being offered. A complete schedule is given in THIS Florida Gardener.

Please help accomplish our aim:  
"EVERY SHOW STANDARD,  
EVERY SHOW REGISTERED".

Mrs. H. J. Davis, *Chairman*

## ORLANDO TO PRESENT CONWAY

The Orlando Garden Club has booked J. Gregory Conway, renowned lecturer, author and artist on exotic flower arrangements, for two appearances at Orlando Garden Center on October 30.

Performances are scheduled for one o'clock in the afternoon and eight o'clock in the evening.

The price of tickets for either performance is \$3, or both for \$5.

## TEA ROSES FOR FLORIDA

Roses such as Baroness Henriette Snoy, William R. Smith and Mrs. Dudley Cross, three of the finest Old Fashioned Tea varieties, are vigorous, easy-to-grow, long-life kinds. Next to these, and often considered fully as good, are Mamam Cochet, Mme. Lambard and Mrs. B. R. Cant, all of which produce large double flowers on strong stems over a long season. Not quite as double, but very profuse and fully dependable are such lovely ones as Marie Van Houtte, Princess de Sagan and others.

You can grow these whether you spray or not. They are not immune to leaf blackspot, but are highly resistant. This cannot be said of most other roses. Tea roses require less "rest" than other roses, making them well suited to Florida conditions.



Lovely Tea Rose  
Baroness Henriette Snoy

### SPECIAL, GET-ACQUAINTED TEA ROSE OFFER

1 Baroness Henriette Snoy

1 Mrs. Dudley Cross

1 Our selection

Three 2-year Tea Rose Plants, \$4.50, Postpaid

If you have already purchased Tea Roses at catalog figures of \$1.75 each you may also purchase this special offer.

## FLORIBUNDA ROSES

Excellent for Florida, Too!



Brilliant and vigorous new  
Floribunda Rose

Fusilier  
All-America Winner for 1958.

Fusilier and Gold Cup, two new All-America Winners for 1958; Chic, wonderful new double pink Floribunda, Starlet, new yellow Floribunda for 1958, Fashion, Ma Perkins, Red Pinocchio, Geranium Red, and others.

Floribundas do a marvelous job of profuse blooming throughout a long rose season. They grow more rapidly and give more for the money the first year than any other roses. Try some of these, you will find Floribundas are Fascinating!

Most of Florida can grow good Hybrid Tea roses, all the way from the old Radiance standbys to the newest All-America for 1958, White Knight.

Beautifully illustrated catalog showing Roses, Daylilies and Camellias, many in natural colors, is free for the asking.

## THOMASVILLE NURSERIES, INC.

"Home of Roses"

Thomasville, Ga.



It's as easy as this  
to multiply your plants with

**ROOTONE<sup>®</sup>**

With this wonderful hormone powder, your slips and cuttings—roses, African violets, chrysanthemums, other favorites—take hold fast; put out strong, healthy roots; grow with miraculous speed. Added fungicide controls damping off and other soil-borne diseases. So—insure *your success* with Rootone.

¼-oz. packet 25c 2-oz. jar \$1  
At garden supply and hardware stores



AMERICAN CHEMICAL PAINT CO.  
St. Joseph, Mo. • AMBLER, PA. • Niles, Calif.

Come to See  
the  
**BEAUTIFUL  
KINZIE GARDENS**

A Paradise of  
**TROPICAL PLANTS  
and ROSES**

2900 Second Street  
**FORT MYERS, FLORIDA**  
Open Daily 9 a.m. - 4 p.m. Except Sundays  
**Bring Your Camera**

**Reddy's Help Indoors**



*Gives Leisure  
for  
Gardening  
Outdoors!*



**FLORIDA POWER &  
LIGHT COMPANY**

**THE FLORIDA GARDENER**  
1555 Van Buren Street,  
Hollywood, Florida  
**RETURN POSTAGE GUARANTEED**



TITUSVILLE FLA F39